

TRIM36 Antibody (Center)
Affinity Purified Rabbit Polyclonal Antibody (Pab)
Catalog # AP13807C**Specification**

TRIM36 Antibody (Center) - Product Information

Application	IHC-P, WB,E
Primary Accession	O9NQ86
Other Accession	NP_061170.2
Reactivity	Human, Mouse
Host	Rabbit
Clonality	Polyclonal
Isotype	Rabbit IgG
Calculated MW	83013
Antigen Region	310-339

TRIM36 Antibody (Center) - Additional Information**Gene ID** 55521**Other Names**

E3 ubiquitin-protein ligase TRIM36, 632-, RING finger protein 98, Tripartite motif-containing protein 36, Zinc-binding protein Rbcc728, TRIM36, RBCC728, RNF98

Target/Specificity

This TRIM36 antibody is generated from rabbits immunized with a KLH conjugated synthetic peptide between 310-339 amino acids from the Central region of human TRIM36.

Dilution

IHC-P~~1:10~50

WB~~1:1000

E~~Use at an assay dependent concentration.

Format

Purified polyclonal antibody supplied in PBS with 0.09% (W/V) sodium azide. This antibody is purified through a protein A column, followed by peptide affinity purification.

Storage

Maintain refrigerated at 2-8°C for up to 2 weeks. For long term storage store at -20°C in small aliquots to prevent freeze-thaw cycles.

Precautions

TRIM36 Antibody (Center) is for research use only and not for use in diagnostic or therapeutic procedures.

TRIM36 Antibody (Center) - Protein Information**Name** TRIM36

Synonyms RBCC728, RNF98

Function E3 ubiquitin-protein ligase which mediates ubiquitination and subsequent proteasomal degradation of target proteins. Involved in chromosome segregation and cell cycle regulation (PubMed:[28087737](#)). May play a role in the acrosome reaction and fertilization.

Cellular Location

Cytoplasm. Cytoplasmic vesicle, secretory vesicle, acrosome {ECO:0000250|UniProtKB:Q80WG7}. Cytoplasm, cytoskeleton {ECO:0000250|UniProtKB:Q80WG7}. Note=Found in the acrosomal region of elongated spermatids and mature sperm. {ECO:0000250|UniProtKB:Q80WG7}

Tissue Location

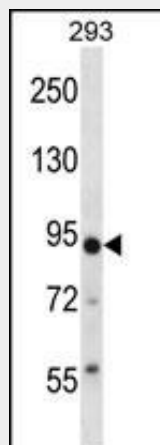
Highly expressed in testis, prostate and brain (PubMed:15145053). Weakly expressed in kidney, lung and heart (PubMed:15145053). Expressed in fetal tissues (PubMed:28087737)

TRIM36 Antibody (Center) - Protocols

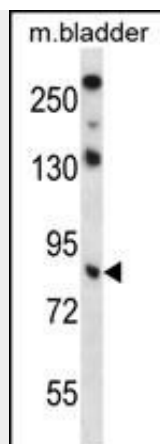
Provided below are standard protocols that you may find useful for product applications.

- [Western Blot](#)
- [Blocking Peptides](#)
- [Dot Blot](#)
- [Immunohistochemistry](#)
- [Immunofluorescence](#)
- [Immunoprecipitation](#)
- [Flow Cytometry](#)
- [Cell Culture](#)

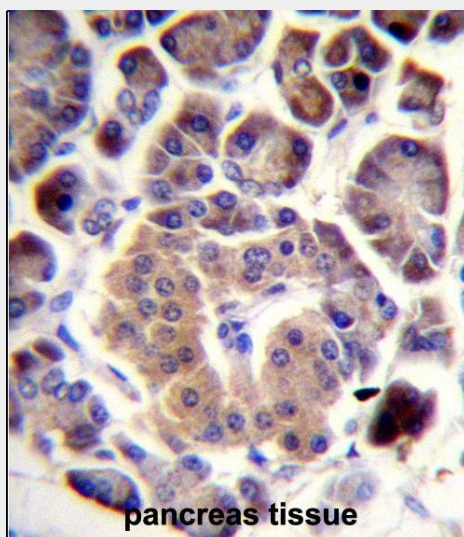
TRIM36 Antibody (Center) - Images



TRIM36 Antibody (Center) (Cat. #AP13807c) western blot analysis in 293 cell line lysates (35ug/lane). This demonstrates the TRIM36 antibody detected the TRIM36 protein (arrow).



TRIM36 Antibody (Center) (Cat. #AP13807c) western blot analysis in mouse bladder tissue lysates (35ug/lane). This demonstrates the TRIM36 antibody detected the TRIM36 protein (arrow).



TRIM36 Antibody (Center) (Cat. #AP13807c) immunohistochemistry analysis in formalin fixed and paraffin embedded human pancreas tissue followed by peroxidase conjugation of the secondary antibody and DAB staining. This data demonstrates the use of TRIM36 Antibody (Center) for immunohistochemistry. Clinical relevance has not been evaluated.

TRIM36 Antibody (Center) - Background

The protein encoded by this gene is a member of the tripartite motif (TRIM) family. The TRIM motif includes three zinc-binding domains, a RING, a B-box type 1 and a B-box type 2, and a coiled-coil region. Multiple alternatively spliced transcript variants that encode different protein isoforms have been described for this gene.

TRIM36 Antibody (Center) - References

Rose, J.E., et al. Mol. Med. 16 (7-8), 247-253 (2010) :
Miyajima, N., et al. Biochem. Biophys. Res. Commun. 381(3):383-387(2009)
Kitamura, K., et al. J. Androl. 26(4):511-518(2005)
Balint, I., et al. Gene 332, 45-50 (2004) :
Reymond, A., et al. EMBO J. 20(9):2140-2151(2001)