

MARCH11 Antibody (C-term)
Affinity Purified Rabbit Polyclonal Antibody (Pab)
Catalog # AP13811b**Specification**

MARCH11 Antibody (C-term) - Product Information

Application	WB,E
Primary Accession	A6NNE9
Other Accession	A6P320 , Q8CBH7 , NP_001096032.1
Reactivity	Human
Predicted	Mouse, Rat
Host	Rabbit
Clonality	Polyclonal
Isotype	Rabbit IgG
Calculated MW	43878
Antigen Region	308-337

MARCH11 Antibody (C-term) - Additional Information**Gene ID** 441061**Other Names**

E3 ubiquitin-protein ligase MARCH11, 632-, Membrane-associated RING finger protein 11, Membrane-associated RING-CH protein XI, MARCH-XI, MARCH11

Target/Specificity

This MARCH11 antibody is generated from rabbits immunized with a KLH conjugated synthetic peptide between 308-337 amino acids from the C-terminal region of human MARCH11.

Dilution

WB~~1:1000

Format

Purified polyclonal antibody supplied in PBS with 0.09% (W/V) sodium azide. This antibody is purified through a protein A column, followed by peptide affinity purification.

Storage

Maintain refrigerated at 2-8°C for up to 2 weeks. For long term storage store at -20°C in small aliquots to prevent freeze-thaw cycles.

Precautions

MARCH11 Antibody (C-term) is for research use only and not for use in diagnostic or therapeutic procedures.

MARCH11 Antibody (C-term) - Protein Information**Name** MARCHF11 ([HGNC:33609](#))

Synonyms MARCH11

Function E3 ubiquitin-protein ligase that mediates polyubiquitination of CD4. E3 ubiquitin ligases accept ubiquitin from an E2 ubiquitin- conjugating enzyme in the form of a thioester and then directly transfer the ubiquitin to targeted substrates. May play a role in ubiquitin-dependent protein sorting in developing spermatids.

Cellular Location

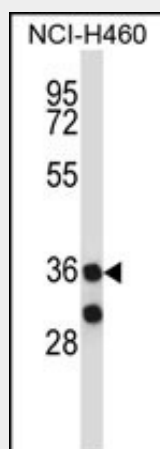
Cytoplasmic vesicle membrane {ECO:0000250|UniProtKB:A6P320}; Multi-pass membrane protein {ECO:0000250|UniProtKB:A6P320}

MARCH11 Antibody (C-term) - Protocols

Provided below are standard protocols that you may find useful for product applications.

- [Western Blot](#)
- [Blocking Peptides](#)
- [Dot Blot](#)
- [Immunohistochemistry](#)
- [Immunofluorescence](#)
- [Immunoprecipitation](#)
- [Flow Cytometry](#)
- [Cell Culture](#)

MARCH11 Antibody (C-term) - Images



MARCH11 Antibody (C-term) (Cat. #AP13811b) western blot analysis in NCI-H460 cell line lysates (35ug/lane). This demonstrates the 40613 antibody detected the 40613 protein (arrow).

MARCH11 Antibody (C-term) - Background

MARCH11 is a member of the MARCH family of membrane-bound E3 ubiquitin ligases (EC 6.3.2.19). These enzymes add ubiquitin (see MIM 191339) to target lysines in substrate proteins, thereby signaling their intracellular transport. March11 appears to have a role in ubiquitin-mediated protein sorting in the trans-Golgi network (TGN)-multivesicular body (MVB) transport pathway (Morokuma et al., 2007 [PubMed 17604280]).

MARCH11 Antibody (C-term) - References

Rose, J. Phd, et al. Mol. Med. (2010) In press :
Morokuma, Y., et al. J. Biol. Chem. 282(34):24806-24815(2007)