

**DCBLD2 Antibody (C-term)**  
**Affinity Purified Rabbit Polyclonal Antibody (Pab)**  
**Catalog # AP13827b****Specification**

---

**DCBLD2 Antibody (C-term) - Product Information**

Application	FC, WB,E
Primary Accession	<a href="#">O96PD2</a>
Other Accession	<a href="#">NP_563615.3</a>
Reactivity	Human, Mouse
Host	Rabbit
Clonality	Polyclonal
Isotype	Rabbit IgG
Antigen Region	538-567

**DCBLD2 Antibody (C-term) - Additional Information****Gene ID** 131566**Other Names**

Discoidin, CUB and LCCL domain-containing protein 2, CUB, LCCL and coagulation factor V/VIII-homology domains protein 1, Endothelial and smooth muscle cell-derived neuropilin-like protein, DCBLD2, CLCP1, ESDN

**Target/Specificity**

This DCBLD2 antibody is generated from rabbits immunized with a KLH conjugated synthetic peptide between 538-567 amino acids from the C-terminal region of human DCBLD2.

**Dilution**

FC~~1:10~50

WB~~1:1000

E~~Use at an assay dependent concentration.

**Format**

Purified polyclonal antibody supplied in PBS with 0.09% (W/V) sodium azide. This antibody is purified through a protein A column, followed by peptide affinity purification.

**Storage**

Maintain refrigerated at 2-8°C for up to 2 weeks. For long term storage store at -20°C in small aliquots to prevent freeze-thaw cycles.

**Precautions**

DCBLD2 Antibody (C-term) is for research use only and not for use in diagnostic or therapeutic procedures.

**DCBLD2 Antibody (C-term) - Protein Information****Name** DCBLD2

**Synonyms** CLCP1, ESDN

**Cellular Location**

Membrane; Single- pass type I membrane protein

**Tissue Location**

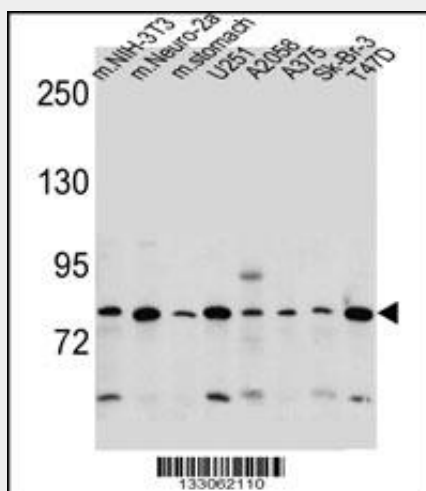
Highly expressed in testis, heart, skeletal muscle and also in cultured vascular smooth muscle cells

**DCBLD2 Antibody (C-term) - Protocols**

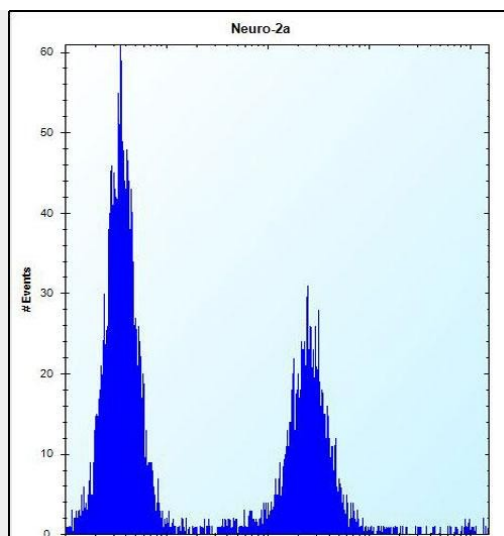
Provided below are standard protocols that you may find useful for product applications.

- [Western Blot](#)
- [Blocking Peptides](#)
- [Dot Blot](#)
- [Immunohistochemistry](#)
- [Immunofluorescence](#)
- [Immunoprecipitation](#)
- [Flow Cytometry](#)
- [Cell Culture](#)

**DCBLD2 Antibody (C-term) - Images**



DCBLD2 Antibody (C-term) (Cat. #AP13827b) western blot analysis in mouse NIH-3T3, Neuro-2a cell line and mouse stomach tissue and U251, A2058, A375, Sk-BR-3, T47D cell line lysates (35ug/lane). This demonstrates the DCBLD2 antibody detected the DCBLD2 protein (arrow).



DCBLD2 Antibody (C-term) (Cat. #AP13827b) flow cytometric analysis of Neuro-2a cells (right histogram) compared to a negative control cell (left histogram). FITC-conjugated donkey-anti-rabbit secondary antibodies were used for the analysis.

#### **DCBLD2 Antibody (C-term) - Background**

DCBLD2, otherwise known as ESDN (endothelial and smooth muscle cell-derived neuropilin-like molecule) is a novel type-I transmembrane protein with the longest cleavable secretory signal sequence among eukaryotes. It is expressed in various tissues; particularly highly expressed in cultured vascular smooth muscle cells. DCBLD2 is considered to play a role in regulation of vascular cell growth and may have a wide variety of functions in other tissues including the nervous system, like neuropilins.

#### **DCBLD2 Antibody (C-term) - References**

Rose, J. Phd, et al. Mol. Med. (2010) In press :  
Guo, X., et al. J. Biol. Chem. 284(43):29376-29382(2009)  
Marroni, F., et al. Circ Cardiovasc Genet 2(4):322-328(2009)  
Kim, M., et al. Mol. Cancer Res. 6(2):222-230(2008)  
Sadeghi, M.M., et al. Am. J. Transplant. 7(9):2098-2105(2007)