

POF1B Antibody (Center)
Affinity Purified Rabbit Polyclonal Antibody (Pab)
Catalog # AP13828c

Specification

POF1B Antibody (Center) - Product Information

Application	WB,E
Primary Accession	O8WVV4
Other Accession	NP_079197.3
Reactivity	Mouse
Host	Rabbit
Clonality	Polyclonal
Isotype	Rabbit IgG
Calculated MW	68065
Antigen Region	337-366

POF1B Antibody (Center) - Additional Information

Gene ID 79983

Other Names

Protein POF1B, Premature ovarian failure protein 1B, POF1B

Target/Specificity

This POF1B antibody is generated from rabbits immunized with a KLH conjugated synthetic peptide between 337-366 amino acids from the Central region of human POF1B.

Dilution

WB~~1:1000

Format

Purified polyclonal antibody supplied in PBS with 0.09% (W/V) sodium azide. This antibody is purified through a protein A column, followed by peptide affinity purification.

Storage

Maintain refrigerated at 2-8°C for up to 2 weeks. For long term storage store at -20°C in small aliquots to prevent freeze-thaw cycles.

Precautions

POF1B Antibody (Center) is for research use only and not for use in diagnostic or therapeutic procedures.

POF1B Antibody (Center) - Protein Information

Name POF1B

Function Plays a key role in the organization of epithelial monolayers by regulating the actin cytoskeleton. May be involved in ovary development.

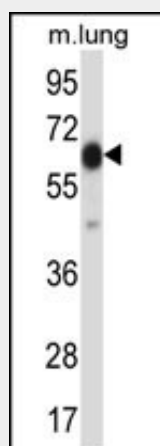
Cellular Location

Cell junction, tight junction

POF1B Antibody (Center) - Protocols

Provided below are standard protocols that you may find useful for product applications.

- [Western Blot](#)
- [Blocking Peptides](#)
- [Dot Blot](#)
- [Immunohistochemistry](#)
- [Immunofluorescence](#)
- [Immunoprecipitation](#)
- [Flow Cytometry](#)
- [Cell Culture](#)

POF1B Antibody (Center) - Images

POF1B Antibody (Center) (Cat. #AP13828c) western blot analysis in mouse lung tissue lysates (35ug/lane). This demonstrates the POF1B antibody detected the POF1B protein (arrow).

POF1B Antibody (Center) - Background

Premature ovarian failure (POF) is characterized by primary or secondary amenorrhea in women less than 40 years old. Two POF susceptibility regions called 'POF1' and 'POF2' have been identified by breakpoint mapping of X-autosome translocations. POF1 extends from Xq21-qter while POF2 extends from Xq13.3 to Xq21.1. This gene, POF1B, resides in the POF2 region. This gene is expressed at trace levels in mouse prenatal ovary and is barely detectable or absent from adult ovary, in human and in the mouse respectively. This gene's expression is restricted to epithelia with its highest expression in the epidermis, and oro-pharyngeal and gastro-intestinal tracts. The protein encoded by this gene binds non-muscle actin filaments. The role this gene may play in the etiology of premature ovarian failure remains to be determined.

POF1B Antibody (Center) - References

Rizzolio, F., et al. Gene Expr. Patterns 7(4):529-534(2007)

Lacombe, A., et al. Am. J. Hum. Genet. 79(1):113-119(2006)
Bione, S., et al. Hum. Reprod. 19(12):2759-2766(2004)
Bione, S., et al. Semin. Reprod. Med. 18(1):51-57(2000)
Riva, P., et al. Clin. Genet. 50(4):267-269(1996)