

ABHD3 Antibody (C-term)
Affinity Purified Rabbit Polyclonal Antibody (Pab)
Catalog # AP13830b

Specification

ABHD3 Antibody (C-term) - Product Information

Application	WB,E
Primary Accession	Q8WU67
Other Accession	Q0VC00 , NP_612213.2
Reactivity	Human
Predicted	Bovine
Host	Rabbit
Clonality	Polyclonal
Isotype	Rabbit IgG
Calculated MW	46009
Antigen Region	282-310

ABHD3 Antibody (C-term) - Additional Information

Gene ID 171586

Other Names

Abhydrolase domain-containing protein 3, 311-, Lung alpha/beta hydrolase 3, ABHD3, LABH3

Target/Specificity

This ABHD3 antibody is generated from rabbits immunized with a KLH conjugated synthetic peptide between 282-310 amino acids from the C-terminal region of human ABHD3.

Dilution

WB~~1:1000

Format

Purified polyclonal antibody supplied in PBS with 0.09% (W/V) sodium azide. This antibody is purified through a protein A column, followed by peptide affinity purification.

Storage

Maintain refrigerated at 2-8°C for up to 2 weeks. For long term storage store at -20°C in small aliquots to prevent freeze-thaw cycles.

Precautions

ABHD3 Antibody (C-term) is for research use only and not for use in diagnostic or therapeutic procedures.

ABHD3 Antibody (C-term) - Protein Information

Name ABHD3 ([HGNC:18718](#))

Function Phospholipase that may play a role in phospholipids remodeling. May selectively cleave

myristate (C14)-containing phosphatidylcholines through its predominant phospholipase 1 activity, cleaving preferentially acyl groups in sn1 position. In parallel, may have a minor phospholipase 2 activity acting on acyl groups in position sn2. In addition to (C14)-containing phosphatidylcholines, may also act on other medium-chain-containing and oxidatively truncated phospholipids.

Cellular Location

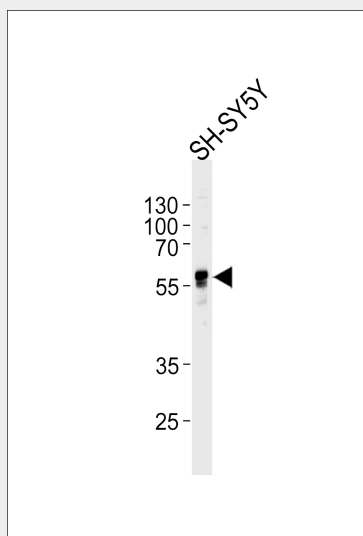
Membrane; Single-pass type II membrane protein

ABHD3 Antibody (C-term) - Protocols

Provided below are standard protocols that you may find useful for product applications.

- [Western Blot](#)
- [Blocking Peptides](#)
- [Dot Blot](#)
- [Immunohistochemistry](#)
- [Immunofluorescence](#)
- [Immunoprecipitation](#)
- [Flow Cytometry](#)
- [Cell Culture](#)

ABHD3 Antibody (C-term) - Images



Western blot analysis of lysate from SH-SY5Y cell line, using ABHD3 Antibody (C-term)(Cat. #AP13830b). AP13830b was diluted at 1:1000 at each lane. A goat anti-rabbit IgG H&L(HRP) at 1:5000 dilution was used as the secondary antibody. Lysate at 35ug per lane.

ABHD3 Antibody (C-term) - Background

This gene encodes a protein containing an alpha/beta hydrolase fold, which is a catalytic domain found in a very wide range of enzymes. The function of this protein has not been determined.

ABHD3 Antibody (C-term) - References

Lamesch, P., et al. Genomics 89(3):307-315(2007)

Edgar, A.J., et al. Biochem. Biophys. Res. Commun. 292(3):617-625(2002)