

XPA Antibody (C-term)
Affinity Purified Rabbit Polyclonal Antibody (Pab)
Catalog # AP13836B**Specification**

XPA Antibody (C-term) - Product Information

Application	WB,E
Primary Accession	P23025
Other Accession	NP_000371.1
Reactivity	Human
Host	Rabbit
Clonality	Polyclonal
Isotype	Rabbit IgG
Calculated MW	31368
Antigen Region	185-213

XPA Antibody (C-term) - Additional Information**Gene ID** 7507**Other Names**

DNA repair protein complementing XP-A cells, Xeroderma pigmentosum group A-complementing protein, XPA, XPAC

Target/Specificity

This XPA antibody is generated from rabbits immunized with a KLH conjugated synthetic peptide between 185-213 amino acids from the C-terminal region of human XPA.

Dilution

WB~~1:1000

Format

Purified polyclonal antibody supplied in PBS with 0.09% (W/V) sodium azide. This antibody is purified through a protein A column, followed by peptide affinity purification.

Storage

Maintain refrigerated at 2-8°C for up to 2 weeks. For long term storage store at -20°C in small aliquots to prevent freeze-thaw cycles.

Precautions

XPA Antibody (C-term) is for research use only and not for use in diagnostic or therapeutic procedures.

XPA Antibody (C-term) - Protein Information**Name** XPA**Synonyms** XPAC

Function Involved in DNA excision repair. Initiates repair by binding to damaged sites with various affinities, depending on the photoproduct and the transcriptional state of the region. Required for UV-induced CHEK1 phosphorylation and the recruitment of CEP164 to cyclobutane pyrimidine dimers (CPD), sites of DNA damage after UV irradiation.

Cellular Location

Nucleus

Tissue Location

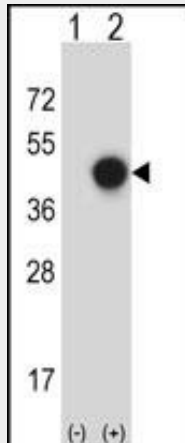
Expressed in various cell lines and in skin fibroblasts.

XPA Antibody (C-term) - Protocols

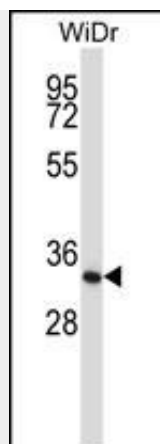
Provided below are standard protocols that you may find useful for product applications.

- [Western Blot](#)
- [Blocking Peptides](#)
- [Dot Blot](#)
- [Immunohistochemistry](#)
- [Immunofluorescence](#)
- [Immunoprecipitation](#)
- [Flow Cytometry](#)
- [Cell Culture](#)

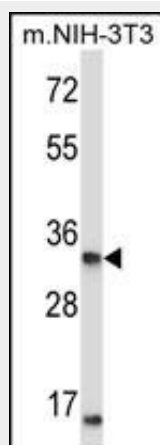
XPA Antibody (C-term) - Images



Western blot analysis of XPA (arrow) using rabbit polyclonal XPA Antibody (C-term) (Cat. #AP13836b). 293 cell lysates (2 ug/lane) either nontransfected (Lane 1) or transiently transfected (Lane 2) with the XPA gene.



XPA Antibody (C-term) (Cat. #AP13836b) western blot analysis in WiDr cell line lysates (35ug/lane). This demonstrates the XPA antibody detected the XPA protein (arrow).



XPA Antibody (C-term) (Cat. #AP13836b) western blot analysis in mouse NIH-3T3 cell line lysates (35ug/lane). This demonstrates the XPA antibody detected the XPA protein (arrow).

XPA Antibody (C-term) - Background

This gene encodes a zinc finger protein involved in DNA excision repair. The encoded protein is part of the NER (nucleotide excision repair) complex which is responsible for repair of UV radiation-induced photoproducts and DNA adducts induced by chemical carcinogens. Mutations in this gene are associated with xeroderma pigmentosum complementation group A. Alternatively spliced transcript variants have been found for this gene. [provided by RefSeq].

XPA Antibody (C-term) - References

Palli, D., et al. Mutagenesis 25(6):569-575(2010)
Fan, W., et al. Mol. Cell 39(2):247-258(2010)
Ho-Pun-Cheung, A., et al. Pharmacogenomics J. (2010) In press :
Hsieh, Y.Y., et al. Anticancer Res. 30(6):2203-2208(2010)
Jelonek, K., et al. J. Appl. Genet. 51(3):343-352(2010)