

RAB6B Antibody (C-term)
Affinity Purified Rabbit Polyclonal Antibody (Pab)
Catalog # AP13850b**Specification**

RAB6B Antibody (C-term) - Product Information

Application	WB,E
Primary Accession	O9NRW1
Other Accession	P61294 , A6QR46 , NP_057661.3
Reactivity	Human
Predicted	Bovine, Mouse
Host	Rabbit
Clonality	Polyclonal
Isotype	Rabbit IgG
Calculated MW	23462
Antigen Region	167-195

RAB6B Antibody (C-term) - Additional Information**Gene ID** 51560**Other Names**

Ras-related protein Rab-6B, RAB6B

Target/Specificity

This RAB6B antibody is generated from rabbits immunized with a KLH conjugated synthetic peptide between 167-195 amino acids from the C-terminal region of human RAB6B.

Dilution

WB~~1:1000

E~~Use at an assay dependent concentration.

Format

Purified polyclonal antibody supplied in PBS with 0.09% (W/V) sodium azide. This antibody is purified through a protein A column, followed by peptide affinity purification.

Storage

Maintain refrigerated at 2-8°C for up to 2 weeks. For long term storage store at -20°C in small aliquots to prevent freeze-thaw cycles.

Precautions

RAB6B Antibody (C-term) is for research use only and not for use in diagnostic or therapeutic procedures.

RAB6B Antibody (C-term) - Protein Information**Name** RAB6B ([HGNC:14902](#))

Function The small GTPases Rab are key regulators of intracellular membrane trafficking, from the formation of transport vesicles to their fusion with membranes. Rabs cycle between active GTP-bound and inactive GDP-bound states. In their active state, drive transport of vesicular carriers from donor organelles to acceptor organelles to regulate the membrane traffic that maintains organelle identity and morphology (By similarity). Recruits VPS13B to the Golgi membrane (PubMed:[25492866](#)). Regulates the compacted morphology of the Golgi (PubMed:[26209634](#)). Seems to have a role in retrograde membrane traffic at the level of the Golgi complex. May function in retrograde transport in neuronal cells (PubMed:[17707369](#)). Plays a role in neuron projection development (PubMed:[25492866](#)).

Cellular Location

Golgi apparatus membrane; Lipid-anchor. Endoplasmic reticulum-Golgi intermediate compartment Cytoplasmic vesicle. Note=Colocalizes with BICD1 at vesicular structures that align along microtubules

Tissue Location

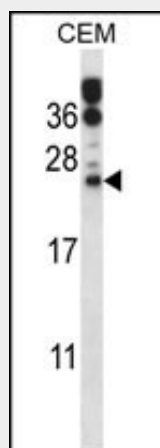
Predominantly expressed in brain.

RAB6B Antibody (C-term) - Protocols

Provided below are standard protocols that you may find useful for product applications.

- [Western Blot](#)
- [Blocking Peptides](#)
- [Dot Blot](#)
- [Immunohistochemistry](#)
- [Immunofluorescence](#)
- [Immunoprecipitation](#)
- [Flow Cytometry](#)
- [Cell Culture](#)

RAB6B Antibody (C-term) - Images



RAB6B Antibody (C-term) (Cat. #AP13850b) western blot analysis in CEM cell line lysates (35ug/lane). This demonstrates the RAB6B antibody detected the RAB6B protein (arrow).

RAB6B Antibody (C-term) - Background

RAB6B seems to have a role in retrograde membrane traffic at the level of the Golgi complex. May function in retrograde transport in neuronal cells.

RAB6B Antibody (C-term) - References

Rose, J. Phd, et al. Mol. Med. (2010) In press :
Wanschers, B., et al. Cell Motil. Cytoskeleton 65(3):183-196(2008)
Wanschers, B.F., et al. Exp. Cell Res. 313(16):3408-3420(2007)
Wu, C., et al. Proteomics 7(11):1775-1785(2007)
Garcia-Saez, I., et al. Acta Crystallogr. D Biol. Crystallogr. 62 (PT 7), 725-733 (2006) :