

**CCR9 Antibody (C-term)**  
**Affinity Purified Rabbit Polyclonal Antibody (Pab)**  
**Catalog # AP13854b**

**Specification**

---

**CCR9 Antibody (C-term) - Product Information**

Application	WB,E
Primary Accession	<a href="#">P51686</a>
Other Accession	<a href="#">O9WUT7</a> , <a href="#">NP_006632.2</a> , <a href="#">NP_112477.1</a> , <a href="#">Q1WLP9</a>
Reactivity	Human
Predicted	Mouse, Sheep
Host	Rabbit
Clonality	Polyclonal
Isotype	Rabbit IgG
Calculated MW	42016
Antigen Region	306-334

**CCR9 Antibody (C-term) - Additional Information**

**Gene ID** 10803

**Other Names**

C-C chemokine receptor type 9, C-C CKR-9, CC-CKR-9, CCR-9, G-protein coupled receptor 28, GPR-9-6, CDw199, CCR9, GPR28

**Target/Specificity**

This CCR9 antibody is generated from rabbits immunized with a KLH conjugated synthetic peptide between 306-334 amino acids from the C-terminal region of human CCR9.

**Dilution**

WB~~1:1000

E~~Use at an assay dependent concentration.

**Format**

Purified polyclonal antibody supplied in PBS with 0.09% (W/V) sodium azide. This antibody is purified through a protein A column, followed by peptide affinity purification.

**Storage**

Maintain refrigerated at 2-8°C for up to 2 weeks. For long term storage store at -20°C in small aliquots to prevent freeze-thaw cycles.

**Precautions**

CCR9 Antibody (C-term) is for research use only and not for use in diagnostic or therapeutic procedures.

**CCR9 Antibody (C-term) - Protein Information**

**Name** CCR9

**Synonyms** GPR28

**Function** Receptor for chemokine SCYA25/TECK. Subsequently transduces a signal by increasing the intracellular calcium ions level.

**Cellular Location**

Cell membrane; Multi-pass membrane protein

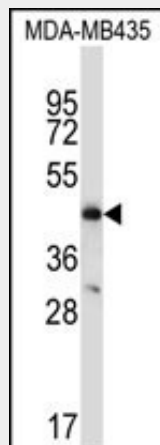
**Tissue Location**

Highly expressed in the thymus and low in lymph nodes and spleen.

**CCR9 Antibody (C-term) - Protocols**

Provided below are standard protocols that you may find useful for product applications.

- [Western Blot](#)
- [Blocking Peptides](#)
- [Dot Blot](#)
- [Immunohistochemistry](#)
- [Immunofluorescence](#)
- [Immunoprecipitation](#)
- [Flow Cytometry](#)
- [Cell Culture](#)

**CCR9 Antibody (C-term) - Images**

CCR9 Antibody (C-term) (Cat. #AP13854b) western blot analysis in MDA-MB435 cell line lysates (35ug/lane). This demonstrates the CCR9 antibody detected the CCR9 protein (arrow).

**CCR9 Antibody (C-term) - Background**

The protein encoded by this gene is a member of the beta chemokine receptor family. It is predicted to be a seven transmembrane protein similar to G protein-coupled receptors. Chemokines and their receptors are key regulators of the thymocytes migration and maturation in normal and inflammation conditions. The specific ligand of this receptor is CCL25. It has been found that this gene is differentially expressed by T lymphocytes of small intestine and colon, suggested a role in the thymocytes recruitment and development that may permit functional specialization of immune

responses in different segment of the gastrointestinal tract. This gene is mapped to the chemokine receptor gene cluster region. Two alternatively spliced transcript variants have been described.

#### **CCR9 Antibody (C-term) - References**

Han, S., et al. Hum. Immunol. 71(7):727-730(2010)  
Rajaraman, P., et al. Cancer Epidemiol. Biomarkers Prev. 19(5):1356-1361(2010)  
Dubois, P.C., et al. Nat. Genet. 42(4):295-302(2010)  
Segat, L., et al. Vaccine 28(10):2201-2206(2010)  
Wang, Y., et al. Cell. Mol. Immunol. 7(1):51-60(2010)