

TERF2 Antibody (Center)
Affinity Purified Rabbit Polyclonal Antibody (Pab)
Catalog # AP13860c**Specification**

TERF2 Antibody (Center) - Product Information

Application	IHC-P, WB,E
Primary Accession	Q15554
Other Accession	NP_005643.1
Reactivity	Human
Host	Rabbit
Clonality	Polyclonal
Isotype	Rabbit IgG
Calculated MW	59594
Antigen Region	308-337

TERF2 Antibody (Center) - Additional Information**Gene ID** 7014**Other Names**

Telomeric repeat-binding factor 2, TTAGGG repeat-binding factor 2, Telomeric DNA-binding protein, TERF2, TRBF2, TRF2

Target/Specificity

This TERF2 antibody is generated from rabbits immunized with a KLH conjugated synthetic peptide between 308-337 amino acids from the Central region of human TERF2.

Dilution

IHC-P~~1:10~50

WB~~1:1000

E~~Use at an assay dependent concentration.

Format

Purified polyclonal antibody supplied in PBS with 0.09% (W/V) sodium azide. This antibody is purified through a protein A column, followed by peptide affinity purification.

Storage

Maintain refrigerated at 2-8°C for up to 2 weeks. For long term storage store at -20°C in small aliquots to prevent freeze-thaw cycles.

Precautions

TERF2 Antibody (Center) is for research use only and not for use in diagnostic or therapeutic procedures.

TERF2 Antibody (Center) - Protein Information**Name** TERF2

Synonyms TRBF2, TRF2 {ECO:0000303|PubMed:28216226}

Function Binds the telomeric double-stranded 5'-TTAGGG-3' repeat and plays a central role in telomere maintenance and protection against end-to-end fusion of chromosomes (PubMed:[15608617](#), PubMed:[16166375](#), PubMed:[20655466](#), PubMed:[28216226](#), PubMed:[9326950](#), PubMed:[9326951](#), PubMed:[9476899](#)). In addition to its telomeric DNA-binding role, required to recruit a number of factors and enzymes required for telomere protection, including the shelterin complex, TERF2IP/RAP1 and DCLRE1B/Apollo (PubMed:[16166375](#), PubMed:[20655466](#)). Component of the shelterin complex (telosome) that is involved in the regulation of telomere length and protection (PubMed:[16166375](#)). Shelterin associates with arrays of double-stranded 5'-TTAGGG-3' repeats added by telomerase and protects chromosome ends; without its protective activity, telomeres are no longer hidden from the DNA damage surveillance and chromosome ends are inappropriately processed by DNA repair pathways (PubMed:[16166375](#)). Together with DCLRE1B/Apollo, plays a key role in telomeric loop (T loop) formation by generating 3' single-stranded overhang at the leading end telomeres; T loops have been proposed to protect chromosome ends from degradation and repair (PubMed:[20655466](#)). Required both to recruit DCLRE1B/Apollo to telomeres and activate the exonuclease activity of DCLRE1B/Apollo (PubMed:[20655466](#), PubMed:[28216226](#)). Preferentially binds to positive supercoiled DNA (PubMed:[15608617](#), PubMed:[20655466](#)). Together with DCLRE1B/Apollo, required to control the amount of DNA topoisomerase (TOP1, TOP2A and TOP2B) needed for telomere replication during fork passage and prevent aberrant telomere topology (PubMed:[20655466](#)). Recruits TERF2IP/RAP1 to telomeres, thereby participating in to repressing homology-directed repair (HDR), which can affect telomere length (By similarity).

Cellular Location

Nucleus {ECO:0000255|PROSITE-ProRule:PRU00625, ECO:0000269|PubMed:20655466}. Chromosome, telomere. Note=Colocalizes with telomeric DNA in interphase cells and is located at chromosome ends during metaphase

Tissue Location

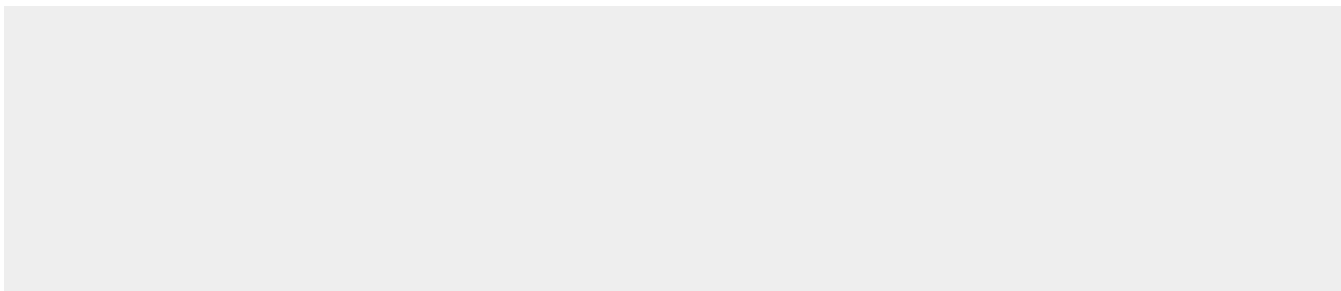
Ubiquitous. Highly expressed in spleen, thymus, prostate, uterus, testis, small intestine, colon and peripheral blood leukocytes.

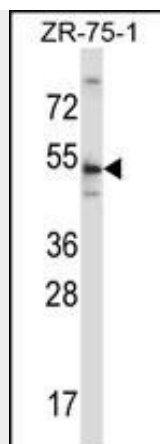
TERF2 Antibody (Center) - Protocols

Provided below are standard protocols that you may find useful for product applications.

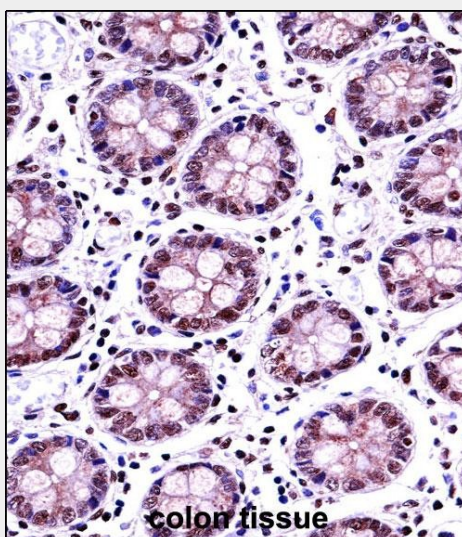
- [Western Blot](#)
- [Blocking Peptides](#)
- [Dot Blot](#)
- [Immunohistochemistry](#)
- [Immunofluorescence](#)
- [Immunoprecipitation](#)
- [Flow Cytometry](#)
- [Cell Culture](#)

TERF2 Antibody (Center) - Images





TERF2 Antibody (Center) (Cat. #AP13860c) western blot analysis in ZR-75-1 cell line lysates (35ug/lane). This demonstrates the TERF2 antibody detected the TERF2 protein (arrow).



TERF2 Antibody (Center) (AP13860c) immunohistochemistry analysis in formalin fixed and paraffin embedded human colon tissue followed by peroxidase conjugation of the secondary antibody and DAB staining. This data demonstrates the use of TERF2 Antibody (Center) for immunohistochemistry. Clinical relevance has not been evaluated.

TERF2 Antibody (Center) - Background

This gene encodes a telomere specific protein, TERF2, which is a component of the telomere nucleoprotein complex. This protein is present at telomeres in metaphase of the cell cycle, is a second negative regulator of telomere length and plays a key role in the protective activity of telomeres. While having similar telomere binding activity and domain organization, TERF2 differs from TERF1 in that its N terminus is basic rather than acidic.

TERF2 Antibody (Center) - References

Prescott, J., et al. Cancer 116(18):4275-4282(2010)
Ye, J., et al. Cell 142(2):230-242(2010)
Bombarde, O., et al. EMBO J. 29(9):1573-1584(2010)
Joslyn, G., et al. Alcohol. Clin. Exp. Res. 34(5):800-812(2010)
Giannone, R.J., et al. PLoS ONE 5 (8), E12407 (2010) :