

EDN2 Antibody (C-term)
Affinity Purified Rabbit Polyclonal Antibody (Pab)
Catalog # AP13863B**Specification**

EDN2 Antibody (C-term) - Product Information

Application	WB,E
Primary Accession	P20800
Other Accession	Q28470 , NP_001947.1
Reactivity	Human
Predicted	Monkey
Host	Rabbit
Clonality	Polyclonal
Isotype	Rabbit IgG
Calculated MW	19960
Antigen Region	107-136

EDN2 Antibody (C-term) - Additional Information**Gene ID** 1907**Other Names**

Endothelin-2, ET-2, Preproendothelin-2, PPET2, EDN2

Target/Specificity

This EDN2 antibody is generated from rabbits immunized with a KLH conjugated synthetic peptide between 107-136 amino acids from the C-terminal region of human EDN2.

Dilution

WB~~1:1000

E~~Use at an assay dependent concentration.

Format

Purified polyclonal antibody supplied in PBS with 0.09% (W/V) sodium azide. This antibody is purified through a protein A column, followed by peptide affinity purification.

Storage

Maintain refrigerated at 2-8°C for up to 2 weeks. For long term storage store at -20°C in small aliquots to prevent freeze-thaw cycles.

Precautions

EDN2 Antibody (C-term) is for research use only and not for use in diagnostic or therapeutic procedures.

EDN2 Antibody (C-term) - Protein Information**Name** EDN2

Function Endothelins are endothelium-derived vasoconstrictor peptides.

Cellular Location
Secreted.

Tissue Location

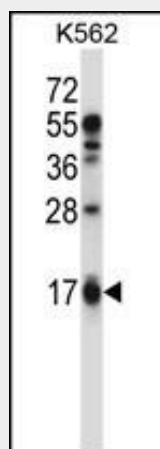
Expressed in lung, but not in placental stem villi vessels or cultured placental villi smooth muscle cells

EDN2 Antibody (C-term) - Protocols

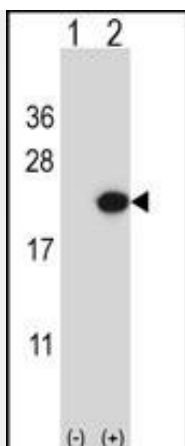
Provided below are standard protocols that you may find useful for product applications.

- [Western Blot](#)
- [Blocking Peptides](#)
- [Dot Blot](#)
- [Immunohistochemistry](#)
- [Immunofluorescence](#)
- [Immunoprecipitation](#)
- [Flow Cytometry](#)
- [Cell Culture](#)

EDN2 Antibody (C-term) - Images



EDN2 Antibody (C-term) (Cat. #AP13863b) western blot analysis in K562 cell line lysates (35ug/lane). This demonstrates the EDN2 antibody detected the EDN2 protein (arrow).



Western blot analysis of EDN2 (arrow) using rabbit polyclonal EDN2 Antibody (C-term) (Cat. #AP13863b). 293 cell lysates (2 ug/lane) either nontransfected (Lane 1) or transiently transfected (Lane 2) with the EDN2 gene.

EDN2 Antibody (C-term) - Background

This gene encodes a member of the endothelin protein family of secretory vasoconstrictive peptides. The preproprotein is processed to a short mature form which functions as a ligand for the endothelin receptors that initiate intracellular signaling events. This gene product is involved in a wide range of biological processes, such as hypertension and ovulation. [provided by RefSeq].

EDN2 Antibody (C-term) - References

Bailey, S.D., et al. Diabetes Care 33(10):2250-2253(2010)
Darrah, R., et al. Physiol. Genomics 41(1):71-77(2010)
Talmud, P.J., et al. Am. J. Hum. Genet. 85(5):628-642(2009)
Menon, R., et al. Reprod. Biol. Endocrinol. 7, 62 (2009) :
Wiesmann, F., et al. Breast Cancer Res. 11 (3), R34 (2009) :