

RLN1/RLN2 Antibody (C-term)
Affinity Purified Rabbit Polyclonal Antibody (Pab)
Catalog # AP13864b**Specification**

RLN1/RLN2 Antibody (C-term) - Product Information

Application	IHC-P, WB,E
Primary Accession	P04808
Other Accession	P04090 , NP_008842.1
Reactivity	Human
Host	Rabbit
Clonality	Polyclonal
Isotype	Rabbit IgG
Calculated MW	21146
Antigen Region	136-165

RLN1/RLN2 Antibody (C-term) - Additional Information**Gene ID** 6013**Other Names**

Prorelaxin H1, Relaxin B chain, Relaxin A chain, RLN1

Target/Specificity

This RLN1/RLN2 antibody is generated from rabbits immunized with a KLH conjugated synthetic peptide between 136-165 amino acids from the C-terminal region of human RLN1/RLN2.

Dilution

IHC-P~~1:10~50

WB~~1:1000

E~~Use at an assay dependent concentration.

Format

Purified polyclonal antibody supplied in PBS with 0.09% (W/V) sodium azide. This antibody is purified through a protein A column, followed by peptide affinity purification.

Storage

Maintain refrigerated at 2-8°C for up to 2 weeks. For long term storage store at -20°C in small aliquots to prevent freeze-thaw cycles.

Precautions

RLN1/RLN2 Antibody (C-term) is for research use only and not for use in diagnostic or therapeutic procedures.

RLN1/RLN2 Antibody (C-term) - Protein Information**Name** RLN1

Function Relaxin is an ovarian hormone that acts with estrogen to produce dilatation of the birth canal in many mammals. May be involved in remodeling of connective tissues during pregnancy, promoting growth of pubic ligaments and ripening of the cervix.

Cellular Location

Secreted.

Tissue Location

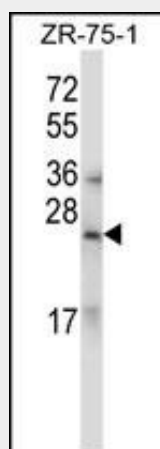
Prostate. Not expressed in placenta, decidua or ovary.

RLN1/RLN2 Antibody (C-term) - Protocols

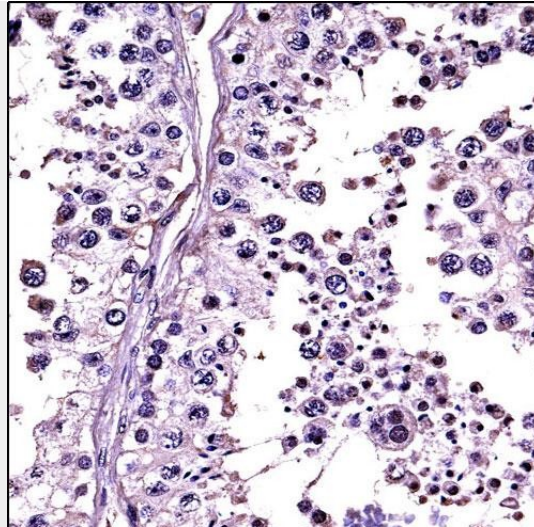
Provided below are standard protocols that you may find useful for product applications.

- [Western Blot](#)
- [Blocking Peptides](#)
- [Dot Blot](#)
- [Immunohistochemistry](#)
- [Immunofluorescence](#)
- [Immunoprecipitation](#)
- [Flow Cytometry](#)
- [Cell Culture](#)

RLN1/RLN2 Antibody (C-term) - Images



RLN1/RLN2 Antibody (C-term) (Cat. #AP13864b) western blot analysis in ZR-75-1 cell line lysates (35ug/lane). This demonstrates the RLN1/RLN2 antibody detected the RLN1/RLN2 protein (arrow).



RLN1/RLN2 Antibody (C-term) (AP13864b) immunohistochemistry analysis in formalin fixed and paraffin embedded human testis tissue followed by peroxidase conjugation of the secondary antibody and DAB staining. This data demonstrates the use of RLN1/RLN2 Antibody (C-term) for immunohistochemistry. Clinical relevance has not been evaluated.

RLN1/RLN2 Antibody (C-term) - Background

Relaxins are known endocrine and autocrine/paracrine hormones, belonging to the insulin gene superfamily. In the human there are three non-allelic relaxin genes, RLN1, RLN2 and RLN3. RLN1 and RLN2 share high sequence homology. This encoded protein is synthesized as a single-chain polypeptide but the active form consists of an A chain and a B chain linked by disulfide bonds; however, their exact cleavage sites have not been described. Relaxin is produced by the ovary, and targets the mammalian reproductive system to ripen the cervix, elongate the pubic symphysis and inhibit uterine contraction. It may have additional roles in enhancing sperm motility, regulating blood pressure, controlling heart rate and releasing oxytocin and vasopressin. This gene has multiple polyadenylation sites. There are multiple alternatively spliced transcript variants described for this gene but their full length nature is not known yet. [provided by RefSeq].

RLN1/RLN2 Antibody (C-term) - References

Radestock, Y., et al. Mol. Cancer Res. 8(4):494-506(2010)
Davila, S., et al. Genes Immun. 11(3):232-238(2010)
Ferlin, A., et al. Bone 46(2):504-513(2010)
Vogel, I., et al. In Vivo 23(6):1005-1009(2009)
Anumba, D.O., et al. Eur. J. Obstet. Gynecol. Reprod. Biol. 147(1):41-45(2009)