

CAPN11 Antibody (Center)
Affinity Purified Rabbit Polyclonal Antibody (Pab)
Catalog # AP13870c

Specification

CAPN11 Antibody (Center) - Product Information

Application	IHC-P, WB,E
Primary Accession	O9UMQ6
Other Accession	NP_008989.2
Reactivity	Human
Host	Rabbit
Clonality	Polyclonal
Isotype	Rabbit IgG
Calculated MW	84423
Antigen Region	409-438

CAPN11 Antibody (Center) - Additional Information

Gene ID 11131

Other Names

Calpain-11, 3422-, Calcium-activated neutral proteinase 11, CANP 11, CAPN11

Target/Specificity

This CAPN11 antibody is generated from rabbits immunized with a KLH conjugated synthetic peptide between 409-438 amino acids from the Central region of human CAPN11.

Dilution

IHC-P~~1:10~50

WB~~1:1000

E~~Use at an assay dependent concentration.

Format

Purified polyclonal antibody supplied in PBS with 0.09% (W/V) sodium azide. This antibody is purified through a protein A column, followed by peptide affinity purification.

Storage

Maintain refrigerated at 2-8°C for up to 2 weeks. For long term storage store at -20°C in small aliquots to prevent freeze-thaw cycles.

Precautions

CAPN11 Antibody (Center) is for research use only and not for use in diagnostic or therapeutic procedures.

CAPN11 Antibody (Center) - Protein Information

Name CAPN11

Function Calcium-regulated non-lysosomal thiol-protease which catalyzes limited proteolysis of substrates involved in cytoskeletal remodeling and signal transduction.

Cellular Location

Cytoplasmic vesicle, secretory vesicle, acrosome

Tissue Location

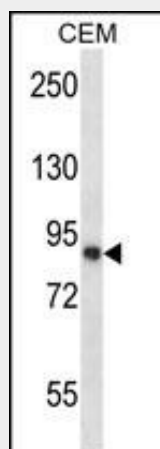
Highest expression in testis.

CAPN11 Antibody (Center) - Protocols

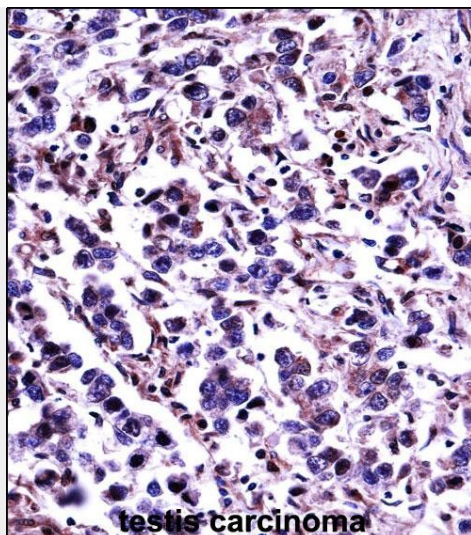
Provided below are standard protocols that you may find useful for product applications.

- [Western Blot](#)
- [Blocking Peptides](#)
- [Dot Blot](#)
- [Immunohistochemistry](#)
- [Immunofluorescence](#)
- [Immunoprecipitation](#)
- [Flow Cytometry](#)
- [Cell Culture](#)

CAPN11 Antibody (Center) - Images



CAPN11 Antibody (Center) (Cat. #AP13870c) western blot analysis in CEM cell line lysates (35ug/lane). This demonstrates the CAPN11 antibody detected the CAPN11 protein (arrow).



CAPN11 Antibody (Center) (AP13870c) immunohistochemistry analysis in formalin fixed and paraffin embedded human testis carcinoma followed by peroxidase conjugation of the secondary antibody and DAB staining. This data demonstrates the use of CAPN11 Antibody (Center) for immunohistochemistry. Clinical relevance has not been evaluated.

CAPN11 Antibody (Center) - Background

Calpains constitute a family of intracellular calcium-dependent cysteine proteases. There are eight members in this superfamily. They consist of a variable 80 kDa subunit and an invariant 30 kDa subunit. This calpain protein appears to have protease activity and calcium-binding ability. A similar mouse protein may play a functional role in spermatogenesis and in the regulation of calcium-dependent signal transduction events during meiosis.

CAPN11 Antibody (Center) - References

Ben-Aharon, I., et al. Mol. Reprod. Dev. 73(6):767-773(2006)
Dear, T.N., et al. Genomics 59(2):243-247(1999)
Rojas, F.J., et al. Mol. Hum. Reprod. 5(6):520-526(1999)
Saido, T.C., et al. FASEB J. 8(11):814-822(1994)
Melloni, E., et al. Trends Neurosci. 12(11):438-444(1989)