

ACTR6 Antibody (C-term)
Affinity Purified Rabbit Polyclonal Antibody (Pab)
Catalog # AP13889b**Specification**

ACTR6 Antibody (C-term) - Product Information

Application	WB,E
Primary Accession	O9GZN1
Other Accession	O9D864 , O9DEE9 , NP_071941.1
Reactivity	Human
Predicted	Chicken, Mouse
Host	Rabbit
Clonality	Polyclonal
Isotype	Rabbit IgG
Calculated MW	45810
Antigen Region	346-374

ACTR6 Antibody (C-term) - Additional Information**Gene ID** 64431**Other Names**

Actin-related protein 6, hArp6, hARPX, ACTR6

Target/Specificity

This ACTR6 antibody is generated from rabbits immunized with a KLH conjugated synthetic peptide between 346-374 amino acids from the C-terminal region of human ACTR6.

Dilution

WB~~1:1000

E~~Use at an assay dependent concentration.

Format

Purified polyclonal antibody supplied in PBS with 0.09% (W/V) sodium azide. This antibody is purified through a protein A column, followed by peptide affinity purification.

Storage

Maintain refrigerated at 2-8°C for up to 2 weeks. For long term storage store at -20°C in small aliquots to prevent freeze-thaw cycles.

Precautions

ACTR6 Antibody (C-term) is for research use only and not for use in diagnostic or therapeutic procedures.

ACTR6 Antibody (C-term) - Protein Information**Name** ACTR6

Function Required for formation and/or maintenance of proper nucleolar structure and function (PubMed:[26164235](#)). Plays a dual role in the regulation of ribosomal DNA (rDNA) transcription (By similarity). In the presence of high glucose, maintains active rDNA transcription through H2A.Z deposition and under glucose starvation, is required for the repression of rDNA transcription, and this function may be independent of H2A.Z (By similarity).

Cellular Location

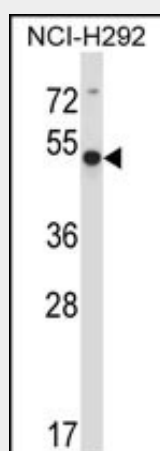
Cytoplasm, cytoskeleton {ECO:0000250|UniProtKB:P45890}. Nucleus Nucleus, nucleolus.
Note=Colocalizes with HP1 family proteins at pericentric heterochromatin

ACTR6 Antibody (C-term) - Protocols

Provided below are standard protocols that you may find useful for product applications.

- [Western Blot](#)
- [Blocking Peptides](#)
- [Dot Blot](#)
- [Immunohistochemistry](#)
- [Immunofluorescence](#)
- [Immunoprecipitation](#)
- [Flow Cytometry](#)
- [Cell Culture](#)

ACTR6 Antibody (C-term) - Images



ACTR6 Antibody (C-term) (Cat. #AP13889b) western blot analysis in NCI-H292 cell line lysates (35ug/lane). This demonstrates the ACTR6 antibody detected the ACTR6 protein (arrow).

ACTR6 Antibody (C-term) - Background

ACTR6 belongs to the actin family.

ACTR6 Antibody (C-term) - References

Lamesch, P., et al. Genomics 89(3):307-315(2007)
Ohfuchi, E., et al. Eur. J. Cell Biol. 85(5):411-421(2006)
Kato, M., et al. Gene 268 (1-2), 133-140 (2001) :