

**SOX30 Antibody (Center)**  
**Affinity Purified Rabbit Polyclonal Antibody (Pab)**  
**Catalog # AP13890c****Specification**

---

**SOX30 Antibody (Center) - Product Information**

Application	WB,E
Primary Accession	<a href="#">O94993</a>
Other Accession	<a href="#">Q8CGW4</a> , <a href="#">Q8WNV5</a> , <a href="#">NP_848511.1</a> , <a href="#">NP_008948.1</a>
Reactivity	Human
Predicted	Monkey, Mouse
Host	Rabbit
Clonality	Polyclonal
Isotype	Rabbit IgG
Calculated MW	81854
Antigen Region	372-400

**SOX30 Antibody (Center) - Additional Information****Gene ID** 11063**Other Names**

Transcription factor SOX-30, SOX30

**Target/Specificity**

This SOX30 antibody is generated from rabbits immunized with a KLH conjugated synthetic peptide between 372-400 amino acids from the Central region of human SOX30.

**Dilution**

WB~~1:1000

E~~Use at an assay dependent concentration.

**Format**

Purified polyclonal antibody supplied in PBS with 0.09% (W/V) sodium azide. This antibody is purified through a protein A column, followed by peptide affinity purification.

**Storage**

Maintain refrigerated at 2-8°C for up to 2 weeks. For long term storage store at -20°C in small aliquots to prevent freeze-thaw cycles.

**Precautions**

SOX30 Antibody (Center) is for research use only and not for use in diagnostic or therapeutic procedures.

**SOX30 Antibody (Center) - Protein Information****Name** SOX30

**Function** Acts both as a transcriptional activator and a repressor (PubMed:[10359848](#), PubMed:[29739711](#)). Binds to the DNA sequence 5'-ACAAT- 3' and shows a preference for guanine residues surrounding this core motif (PubMed:[10359848](#)). Binds to its own promoter and activates its own transcription (By similarity). Required to activate the expression of postmeiotic genes involved in spermiogenesis (By similarity). Binds to the promoter region of CTNNB1 and represses its transcription which leads to inhibition of Wnt signaling (PubMed:[29739711](#)). Also inhibits Wnt signaling by binding to the CTNNB1 protein, preventing interaction of CTNNB1 with TCF7L2/TCF4 (PubMed:[29739711](#)).

#### Cellular Location

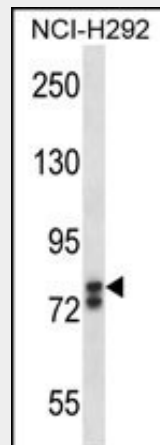
Nucleus. Cytoplasm Note=Enriched at the chromocenter. {ECO:0000250|UniProtKB:Q8CGW4}

### SOX30 Antibody (Center) - Protocols

Provided below are standard protocols that you may find useful for product applications.

- [Western Blot](#)
- [Blocking Peptides](#)
- [Dot Blot](#)
- [Immunohistochemistry](#)
- [Immunofluorescence](#)
- [Immunoprecipitation](#)
- [Flow Cytometry](#)
- [Cell Culture](#)

### SOX30 Antibody (Center) - Images



SOX30 Antibody (Center) (Cat. #AP13890c) western blot analysis in NCI-H292 cell line lysates (35ug/lane). This demonstrates the SOX30 antibody detected the SOX30 protein (arrow).

### SOX30 Antibody (Center) - Background

This gene encodes a member of the SOX (SRY-related HMG-box) family of transcription factors involved in the regulation of embryonic development and in the determination of the cell fate. The encoded protein may act as a transcriptional regulator after forming a protein complex with other proteins. The protein may be involved in the differentiation of developing male germ cells. Two transcript variants encoding distinct isoforms have been identified for this gene.

**SOX30 Antibody (Center) - References**

- Fan, B.J., et al. Invest. Ophthalmol. Vis. Sci. 49(5):1886-1897(2008)  
Koopman, P., et al. Gene 328, 177-186 (2004) :  
Bullejos, M., et al. Genetica 110(2):157-162(2000)  
Osaki, E., et al. Nucleic Acids Res. 27(12):2503-2510(1999)