

NRBP1 Antibody (N-term)
Affinity Purified Rabbit Polyclonal Antibody (Pab)
Catalog # AP13894a**Specification**

NRBP1 Antibody (N-term) - Product Information

Application	WB,E
Primary Accession	Q9UHY1
Other Accession	Q99J45 , Q4R8X0 , NP_037524.1
Reactivity	Human
Predicted	Monkey, Mouse
Host	Rabbit
Clonality	Polyclonal
Isotype	Rabbit IgG
Calculated MW	59845
Antigen Region	86-115

NRBP1 Antibody (N-term) - Additional Information**Gene ID** 29959**Other Names**

Nuclear receptor-binding protein, NRBP1, BCON3 {ECO:0000312|EMBL:AAF219671}, NRBP

Target/Specificity

This NRBP1 antibody is generated from rabbits immunized with a KLH conjugated synthetic peptide between 86-115 amino acids from the N-terminal region of human NRBP1.

Dilution

WB~~1:1000

E~~Use at an assay dependent concentration.

Format

Purified polyclonal antibody supplied in PBS with 0.09% (W/V) sodium azide. This antibody is purified through a protein A column, followed by peptide affinity purification.

Storage

Maintain refrigerated at 2-8°C for up to 2 weeks. For long term storage store at -20°C in small aliquots to prevent freeze-thaw cycles.

Precautions

NRBP1 Antibody (N-term) is for research use only and not for use in diagnostic or therapeutic procedures.

NRBP1 Antibody (N-term) - Protein Information**Name** NRBP1

Synonyms BCON3 {ECO:0000312|EMBL:AAF21967.1}, NRB

Function Required for embryonic development (By similarity). Plays a role in intestinal epithelial cell fate and proliferation, thereby involved in the architectural development of the intestine potentially via the regulation of Wnt-responsive genes (By similarity). May play a role in subcellular trafficking between the endoplasmic reticulum and Golgi apparatus through interactions with the Rho-type GTPases (PubMed:[11956649](#)). Binding to the NS3 protein of dengue virus type 2 appears to subvert this activity into the alteration of the intracellular membrane structure associated with flaviviral replication (PubMed:[15084397](#)).

Cellular Location

Cytoplasm, cell cortex. Endomembrane system. Cell projection, lamellipodium. Note=Colocalizes with activated RAC3 to endomembranes and at the cell periphery in lamellipodia

Tissue Location

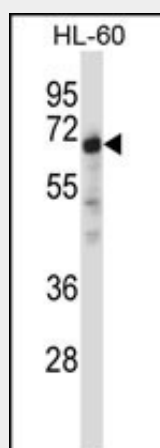
Ubiquitously expressed in all tissues examined with high levels in the testis.

NRBP1 Antibody (N-term) - Protocols

Provided below are standard protocols that you may find useful for product applications.

- [Western Blot](#)
- [Blocking Peptides](#)
- [Dot Blot](#)
- [Immunohistochemistry](#)
- [Immunofluorescence](#)
- [Immunoprecipitation](#)
- [Flow Cytometry](#)
- [Cell Culture](#)

NRBP1 Antibody (N-term) - Images



NRBP1 Antibody (N-term) (Cat. #AP13894a) western blot analysis in HL-60 cell line lysates (35ug/lane). This demonstrates the NRBP1 antibody detected the NRBP1 protein (arrow).

NRBP1 Antibody (N-term) - Background

NRBP1 may play a role in subcellular trafficking between the endoplasmic reticulum and Golgi apparatus through interactions with the Rho-type GTPases. Binding to the NS3 protein of dengue virus type 2 appears to subvert this activity into the alteration of the intracellular membrane

structure associated with flaviviral replication.

NRBP1 Antibody (N-term) - References

Ewing, R.M., et al. Mol. Syst. Biol. 3, 89 (2007) :
Olsen, J.V., et al. Cell 127(3):635-648(2006)
Wang, H., et al. FEBS Lett. 580(25):6015-6021(2006)
Beausoleil, S.A., et al. Nat. Biotechnol. 24(10):1285-1292(2006)
Hillier, L.W., et al. Nature 434(7034):724-731(2005)