

MMP20 Antibody (C-term)
Affinity Purified Rabbit Polyclonal Antibody (Pab)
Catalog # AP13895b**Specification**

MMP20 Antibody (C-term) - Product Information

Application	WB,E
Primary Accession	O60882
Other Accession	O18767 , NP_004762.2
Reactivity	Human
Predicted	Bovine
Host	Rabbit
Clonality	Polyclonal
Isotype	Rabbit IgG
Calculated MW	54387
Antigen Region	399-428

MMP20 Antibody (C-term) - Additional Information**Gene ID** 9313**Other Names**

Matrix metalloproteinase-20, MMP-20, 3424-, Enamel metalloproteinase, Enamelysin, MMP20

Target/Specificity

This MMP20 antibody is generated from rabbits immunized with a KLH conjugated synthetic peptide between 399-428 amino acids from the C-terminal region of human MMP20.

Dilution

WB~~1:1000

E~~Use at an assay dependent concentration.

Format

Purified polyclonal antibody supplied in PBS with 0.09% (W/V) sodium azide. This antibody is purified through a protein A column, followed by peptide affinity purification.

Storage

Maintain refrigerated at 2-8°C for up to 2 weeks. For long term storage store at -20°C in small aliquots to prevent freeze-thaw cycles.

Precautions

MMP20 Antibody (C-term) is for research use only and not for use in diagnostic or therapeutic procedures.

MMP20 Antibody (C-term) - Protein Information**Name** MMP20

Function Degrades amelogenin, the major protein component of the enamel matrix and two of the macromolecules characterizing the cartilage extracellular matrix: aggrecan and the cartilage oligomeric matrix protein (COMP). May play a central role in tooth enamel formation. Cleaves aggrecan at the '360-Asn-I-Phe-361' site.

Cellular Location

Secreted, extracellular space, extracellular matrix

Tissue Location

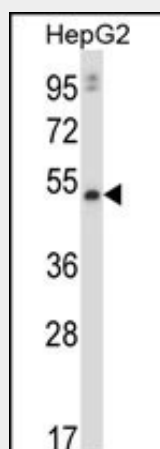
Expressed specifically in the enamel organ.

MMP20 Antibody (C-term) - Protocols

Provided below are standard protocols that you may find useful for product applications.

- [Western Blot](#)
- [Blocking Peptides](#)
- [Dot Blot](#)
- [Immunohistochemistry](#)
- [Immunofluorescence](#)
- [Immunoprecipitation](#)
- [Flow Cytometry](#)
- [Cell Culture](#)

MMP20 Antibody (C-term) - Images



MMP20 Antibody (C-term) (Cat. #AP13895b) western blot analysis in HepG2 cell line lysates (35ug/lane). This demonstrates the MMP20 antibody detected the MMP20 protein (arrow).

MMP20 Antibody (C-term) - Background

Proteins of the matrix metalloproteinase (MMP) family are involved in the breakdown of extracellular matrix in normal physiological processes, such as embryonic development, reproduction, and tissue remodeling, as well as in disease processes, such as arthritis and metastasis. Most MMP's are secreted as inactive proproteins which are activated when cleaved by extracellular proteinases. The protein encoded by this gene degrades amelogenin, the major protein component of dental enamel matrix, and so the protein is thought to play a role in tooth

enamel formation. A mutation in this gene, which alters the normal splice pattern and results in premature termination of the encoded protein, has been associated with amelogenesis imperfecta. This gene is part of a cluster of MMP genes that localizes to chromosome 11q22.3.

MMP20 Antibody (C-term) - References

Bailey, S.D., et al. Diabetes Care (2010) In press :
Rose, J.E., et al. Mol. Med. 16 (7-8), 247-253 (2010) :
Wojciechowski, R., et al. Invest. Ophthalmol. Vis. Sci. (2010) In press :
Lee, S.K., et al. J. Dent. Res. 89(1):46-50(2010)
Talmud, P.J., et al. Am. J. Hum. Genet. 85(5):628-642(2009)