

Mouse Epha4 Antibody (Center)
Affinity Purified Rabbit Polyclonal Antibody (Pab)
Catalog # AP13915c

Specification

Mouse Epha4 Antibody (Center) - Product Information

Application	IHC-P, WB,E
Primary Accession	Q03137
Other Accession	P54764 , NP_031962.2
Reactivity	Human, Mouse
Host	Rabbit
Clonality	Polyclonal
Isotype	Rabbit IgG
Calculated MW	109814
Antigen Region	464-492

Mouse Epha4 Antibody (Center) - Additional Information

Gene ID 13838

Other Names

Ephrin type-A receptor 4, Tyrosine-protein kinase receptor MPK-3, Tyrosine-protein kinase receptor SEK-1, Epha4, Sek, Sek1

Target/Specificity

This Mouse Epha4 antibody is generated from rabbits immunized with a KLH conjugated synthetic peptide between 464-492 amino acids from the Central region of mouse Epha4.

Dilution

IHC-P~~1:10~50

WB~~1:1000

E~~Use at an assay dependent concentration.

Format

Purified polyclonal antibody supplied in PBS with 0.09% (W/V) sodium azide. This antibody is purified through a protein A column, followed by peptide affinity purification.

Storage

Maintain refrigerated at 2-8°C for up to 2 weeks. For long term storage store at -20°C in small aliquots to prevent freeze-thaw cycles.

Precautions

Mouse Epha4 Antibody (Center) is for research use only and not for use in diagnostic or therapeutic procedures.

Mouse Epha4 Antibody (Center) - Protein Information

Name Epha4

Synonyms Sek, Sek1

Function Receptor tyrosine kinase which binds membrane-bound ephrin family ligands residing on adjacent cells, leading to contact-dependent bidirectional signaling into neighboring cells. The signaling pathway downstream of the receptor is referred to as forward signaling while the signaling pathway downstream of the ephrin ligand is referred to as reverse signaling. Highly promiscuous, it has the unique property among Eph receptors to bind and to be physiologically activated by both GPI- anchored ephrin-A and transmembrane ephrin-B ligands including EFNA1 and EFNB3. Upon activation by ephrin ligands, modulates cell morphology and integrin-dependent cell adhesion through regulation of the Rac, Rap and Rho GTPases activity (PubMed:[17719550](#)). Plays an important role in the development of the nervous system controlling different steps of axonal guidance including the establishment of the corticospinal projections (PubMed:[17719550](#), PubMed:[17785183](#), PubMed:[9789074](#)). May also control the segregation of motor and sensory axons during neuromuscular circuit developmen (PubMed:[18403711](#)). In addition to its role in axonal guidance plays a role in synaptic plasticity. Activated by EFNA1 phosphorylates CDK5 at 'Tyr-15' which in turn phosphorylates NGEF regulating RHOA and dendritic spine morphogenesis (PubMed:[17143272](#)). In the nervous system, also plays a role in repair after injury preventing axonal regeneration and in angiogenesis playing a role in central nervous system vascular formation (PubMed:[15537875](#), PubMed:[16802330](#)). Additionally, its promiscuity makes it available to participate in a variety of cell-cell signaling regulating for instance the development of the thymic epithelium (PubMed:[16818734](#)). During development of the cochlear organ of Corti, regulates pillar cell separation by forming a ternary complex with ADAM10 and CADH1 which facilitates the cleavage of CADH1 by ADAM10 and disruption of adherens junctions (PubMed:[30639848](#)). Phosphorylates CAPRIN1, promoting CAPRIN1- dependent formation of a membraneless compartment (PubMed:[31439799](#)).

Cellular Location

Cell membrane; Single-pass type I membrane protein. Cell projection, axon. Cell projection, dendrite. Postsynaptic density membrane. Early endosome. Cell junction, adherens junction
Note=Clustered upon activation and targeted to early endosome

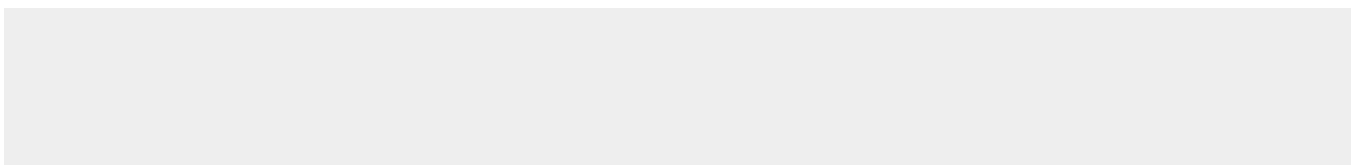
Tissue Location

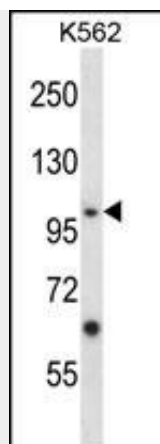
Expressed in inner and outer pillar cells of the organ of Corti (at protein level) (PubMed:30639848). Highest expression in the adult brain and retina and also detectable in kidney, lung, skeletal muscle and thymus. Not detected in heart and liver. Expressed in myogenic progenitor cells (PubMed:27446912)

Mouse EphA4 Antibody (Center) - Protocols

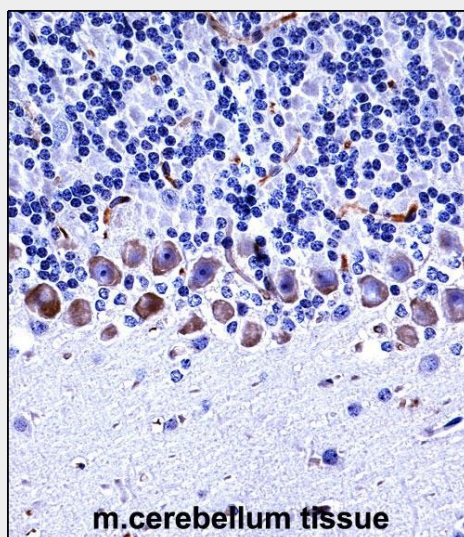
Provided below are standard protocols that you may find useful for product applications.

- [Western Blot](#)
- [Blocking Peptides](#)
- [Dot Blot](#)
- [Immunohistochemistry](#)
- [Immunofluorescence](#)
- [Immunoprecipitation](#)
- [Flow Cytometry](#)
- [Cell Culture](#)

Mouse EphA4 Antibody (Center) - Images



Mouse Epha4 Antibody (Center) (Cat. #AP13915c) western blot analysis in K562 cell line lysates (35ug/lane). This demonstrates the Epha4 antibody detected the Epha4 protein (arrow).



Mouse Epha4 Antibody (Center) (AP13915c) immunohistochemistry analysis in formalin fixed and paraffin embedded mouse cerebellum tissue followed by peroxidase conjugation of the secondary antibody and DAB staining. This data demonstrates the use of Mouse Epha4 Antibody (Center) for immunohistochemistry. Clinical relevance has not been evaluated.

Mouse Epha4 Antibody (Center) - Background

Receptor for members of the ephrin-A family. Binds to ephrin-A1, -A4 and -A5. Binds more poorly to ephrin-A2 and -A3. May play a role in a signal transduction process involved in hindbrain pattern formation.

Mouse Epha4 Antibody (Center) - References

- Kuwako, K., et al. Neuron 67(3):407-421(2010)
- Qu, Y., et al. J. Neurosci. 30(28):9392-9401(2010)
- Oginuma, M., et al. Development 137(9):1515-1522(2010)
- Xie, Z., et al. Proc. Natl. Acad. Sci. U.S.A. 107(14):6510-6515(2010)
- Galimberti, I., et al. Neuron 65(5):627-642(2010)