

Mouse Map3k2 Antibody (N-term)
Affinity Purified Rabbit Polyclonal Antibody (Pab)
Catalog # AP13917A

Specification

Mouse Map3k2 Antibody (N-term) - Product Information

Application	IHC-P, WB,E
Primary Accession	Q61083
Reactivity	Human, Mouse
Host	Rabbit
Clonality	Polyclonal
Isotype	Rabbit IgG
Calculated MW	69574
Antigen Region	14-43

Mouse Map3k2 Antibody (N-term) - Additional Information

Other Names

Mitogen-activated protein kinase kinase kinase 2, MAPK/ERK kinase kinase 2, MEK kinase 2, MEKK 2, Map3k2, Mekk2

Target/Specificity

This Mouse Map3k2 antibody is generated from rabbits immunized with a KLH conjugated synthetic peptide between 14-43 amino acids from the N-terminal region of mouse Map3k2.

Dilution

IHC-P~~1:10~50

WB~~1:1000

E~~Use at an assay dependent concentration.

Format

Purified polyclonal antibody supplied in PBS with 0.09% (W/V) sodium azide. This antibody is purified through a protein A column, followed by peptide affinity purification.

Storage

Maintain refrigerated at 2-8°C for up to 2 weeks. For long term storage store at -20°C in small aliquots to prevent freeze-thaw cycles.

Precautions

Mouse Map3k2 Antibody (N-term) is for research use only and not for use in diagnostic or therapeutic procedures.

Mouse Map3k2 Antibody (N-term) - Protein Information

Name Map3k2

Synonyms Mekk2

Function Component of a protein kinase signal transduction cascade. Regulates the JNK and ERK5 pathways by phosphorylating and activating MAP2K5 and MAP2K7. Plays a role in caveolae kiss-and-run dynamics (By similarity).

Cellular Location

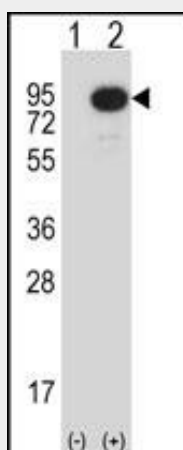
Cytoplasm. Nucleus. Note=Upon EGF stimulation, translocates into the nucleus

Mouse Map3k2 Antibody (N-term) - Protocols

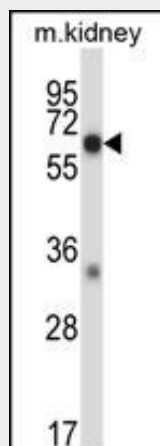
Provided below are standard protocols that you may find useful for product applications.

- [Western Blot](#)
- [Blocking Peptides](#)
- [Dot Blot](#)
- [Immunohistochemistry](#)
- [Immunofluorescence](#)
- [Immunoprecipitation](#)
- [Flow Cytometry](#)
- [Cell Culture](#)

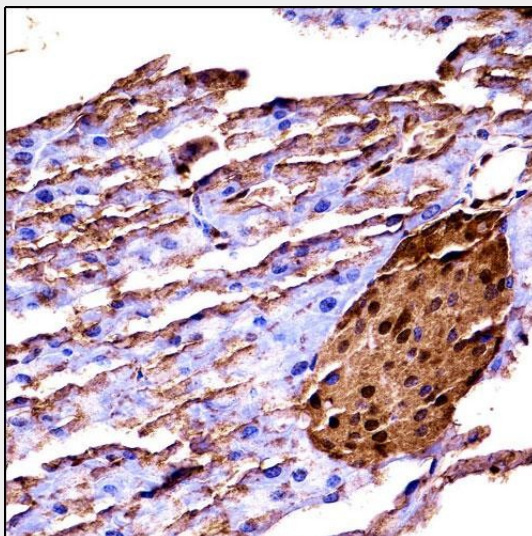
Mouse Map3k2 Antibody (N-term) - Images



Western blot analysis of Map3k2 (arrow) using rabbit polyclonal Mouse Map3k2 Antibody (N-term) (Cat. #AP13917a). 293 cell lysates (2 ug/lane) either nontransfected (Lane 1) or transiently transfected (Lane 2) with the Map3k2 gene.



Mouse Map3k2 Antibody (N-term) (Cat. #AP13917a) western blot analysis in mouse kidney tissue lysates (35ug/lane). This demonstrates the Map3k2 antibody detected the Map3k2 protein (arrow).



Mouse Map3k2 (N-term) (AP13917a) immunohistochemistry analysis in formalin fixed and paraffin embedded mouse pancreas tissue followed by peroxidase conjugation of the secondary antibody and DAB staining. This data demonstrates the use of Mouse Map3k2 (N-term) for immunohistochemistry. Clinical relevance has not been evaluated.

Mouse Map3k2 Antibody (N-term) - Background

Component of a protein kinase signal transduction cascade. Regulates the JNK and ERK5 pathways by phosphorylating and activating MAP2K5 and MAP2K7. Plays a role in caveolae kiss-and-run dynamics (By similarity).