

**Mouse Nek8 Antibody (C-term)**  
**Affinity Purified Rabbit Polyclonal Antibody (Pab)**  
**Catalog # AP13927B****Specification**

---

**Mouse Nek8 Antibody (C-term) - Product Information**

Application	WB,E
Primary Accession	<a href="#">O91ZR4</a>
Other Accession	<a href="#">NP_543125.1</a>
Reactivity	Human, Mouse
Host	Rabbit
Clonality	Polyclonal
Isotype	Rabbit IgG
Calculated MW	75265
Antigen Region	519-547

**Mouse Nek8 Antibody (C-term) - Additional Information****Gene ID** 140859**Other Names**

Serine/threonine-protein kinase Nek8, Never in mitosis A-related kinase 8, NimA-related protein kinase 8, Nek8, Jck

**Target/Specificity**

This Mouse Nek8 antibody is generated from rabbits immunized with a KLH conjugated synthetic peptide between 519-547 amino acids from the C-terminal region of mouse Nek8.

**Dilution**

WB~~1:1000

**Format**

Purified polyclonal antibody supplied in PBS with 0.09% (W/V) sodium azide. This antibody is purified through a protein A column, followed by peptide affinity purification.

**Storage**

Maintain refrigerated at 2-8°C for up to 2 weeks. For long term storage store at -20°C in small aliquots to prevent freeze-thaw cycles.

**Precautions**

Mouse Nek8 Antibody (C-term) is for research use only and not for use in diagnostic or therapeutic procedures.

**Mouse Nek8 Antibody (C-term) - Protein Information****Name** Nek8**Synonyms** Jck

**Function** Required for renal tubular integrity. May regulate local cytoskeletal structure in kidney tubule epithelial cells. May regulate ciliary biogenesis through targeting of proteins to the cilia. Plays a role in organogenesis and is involved in the regulation of the Hippo signaling pathway.

#### **Cellular Location**

Cytoplasm. Cytoplasm, cytoskeleton. Cell projection, cilium. Cytoplasm, cytoskeleton, microtubule organizing center, centrosome {ECO:0000250|UniProtKB:Q86SG6}. Note=Predominantly cytoplasmic Localizes to the proximal region of the primary cilium and is not observed in dividing cells.

#### **Tissue Location**

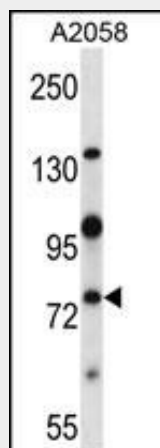
Kidney, liver, and testis.

### **Mouse Nek8 Antibody (C-term) - Protocols**

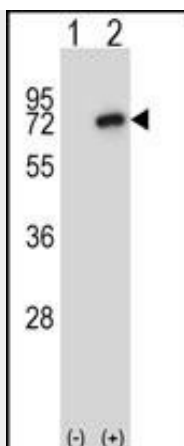
Provided below are standard protocols that you may find useful for product applications.

- [Western Blot](#)
- [Blocking Peptides](#)
- [Dot Blot](#)
- [Immunohistochemistry](#)
- [Immunofluorescence](#)
- [Immunoprecipitation](#)
- [Flow Cytometry](#)
- [Cell Culture](#)

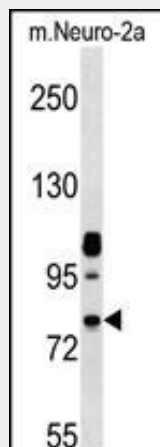
### **Mouse Nek8 Antibody (C-term) - Images**



Mouse Nek8 Antibody (C-term) (Cat. #AP13927b) western blot analysis in A2058 cell line lysates (35ug/lane). This demonstrates the Nek8 antibody detected the Nek8 protein (arrow).



Western blot analysis of Nek8 (arrow) using rabbit polyclonal Mouse Nek8 Antibody (C-term) (Cat. #AP13927b). 293 cell lysates (2 ug/lane) either nontransfected (Lane 1) or transiently transfected (Lane 2) with the Nek8 gene.



Mouse Nek8 Antibody (C-term) (Cat. #AP13927b) western blot analysis in mouse Neuro-2a cell line lysates (35ug/lane). This demonstrates the Nek8 antibody detected the Nek8 protein (arrow).

#### Mouse Nek8 Antibody (C-term) - Background

This gene encodes a NIMA-related kinase. Members of this serine/threonine protein kinase family are structurally-related to NIMA (never in mitosis, gene A) which controls mitotic signaling in *Aspergillus nidulans*.

#### Mouse Nek8 Antibody (C-term) - References

- Hellman, N.E., et al. Proc. Natl. Acad. Sci. U.S.A. 107(43):18499-18504(2010)
- Ahmadie, R., et al. J. Nutr. 140(8):1438-1444(2010)
- Natoli, T.A., et al. Nat. Med. 16(7):788-792(2010)
- Shiba, D., et al. Cytoskeleton (Hoboken) 67(2):112-119(2010)
- Sohara, E., et al. J. Am. Soc. Nephrol. 19(3):469-476(2008)