

TRAF3 Antibody (C-term)
Affinity Purified Rabbit Polyclonal Antibody (Pab)
Catalog # AP13945b**Specification**

TRAF3 Antibody (C-term) - Product Information

Application	WB,E
Primary Accession	Q13114
Other Accession	Q60803 , NP_663777.1 , NP_663778.1 , NP_003291.2
Reactivity	Human, Mouse
Host	Rabbit
Clonality	Polyclonal
Isotype	Rabbit IgG
Calculated MW	64490
Antigen Region	490-517

TRAF3 Antibody (C-term) - Additional Information**Gene ID** 7187**Other Names**

TNF receptor-associated factor 3, 632-, CAP-1, CD40 receptor-associated factor 1, CRAF1, CD40-binding protein, CD40BP, LMP1-associated protein 1, LAP1, TRAF3, CAP1, CRAF1

Target/Specificity

This TRAF3 antibody is generated from rabbits immunized with a KLH conjugated synthetic peptide between 490-517 amino acids from the C-terminal region of human TRAF3.

Dilution

WB~~1:1000

E~~Use at an assay dependent concentration.

Format

Purified polyclonal antibody supplied in PBS with 0.09% (W/V) sodium azide. This antibody is purified through a protein A column, followed by peptide affinity purification.

Storage

Maintain refrigerated at 2-8°C for up to 2 weeks. For long term storage store at -20°C in small aliquots to prevent freeze-thaw cycles.

Precautions

TRAF3 Antibody (C-term) is for research use only and not for use in diagnostic or therapeutic procedures.

TRAF3 Antibody (C-term) - Protein Information**Name** TRAF3 ([HGNC:12033](#))

Function Cytoplasmic E3 ubiquitin ligase that regulates various signaling pathways, such as the NF-kappa-B, mitogen-activated protein kinase (MAPK) and interferon regulatory factor (IRF) pathways, and thus controls a lot of biological processes in both immune and non-immune cell types (PubMed:[33148796](#), PubMed:[33608556](#)). In TLR and RLR signaling pathways, acts as an E3 ubiquitin ligase promoting the synthesis of 'Lys-63'-linked polyubiquitin chains on several substrates such as ASC that lead to the activation of the type I interferon response or the inflammasome (PubMed:[25847972](#), PubMed:[27980081](#)). Following the activation of certain TLRs such as TLR4, acts as a negative NF-kappa-B regulator, possibly to avoid unregulated inflammatory response, and its degradation via 'Lys-48'-linked polyubiquitination is required for MAPK activation and production of inflammatory cytokines. Alternatively, when TLR4 orchestrates bacterial expulsion, TRAF3 undergoes 'Lys-33'-linked polyubiquitination and subsequently binds to RALGDS, mobilizing the exocyst complex to rapidly expel intracellular bacteria back for clearance (PubMed:[27438768](#)). Also acts as a constitutive negative regulator of the alternative NF-kappa-B pathway, which controls B-cell survival and lymphoid organ development. Required for normal antibody isotype switching from IgM to IgG. Plays a role T-cell dependent immune responses. Down-regulates proteolytic processing of NFKB2, and thereby inhibits non-canonical activation of NF-kappa-B. Promotes ubiquitination and proteasomal degradation of MAP3K14.

Cellular Location

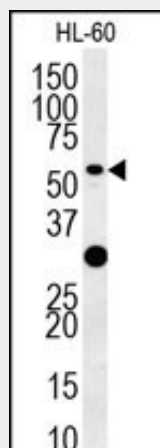
Cytoplasm. Endosome {ECO:0000250|UniProtKB:Q60803} Mitochondrion. Note=Undergoes endocytosis together with TLR4 upon LPS signaling (By similarity). Co-localized to mitochondria with TRIM35 (PubMed:32562145) {ECO:0000250|UniProtKB:Q60803, ECO:0000269|PubMed:32562145}

TRAF3 Antibody (C-term) - Protocols

Provided below are standard protocols that you may find useful for product applications.

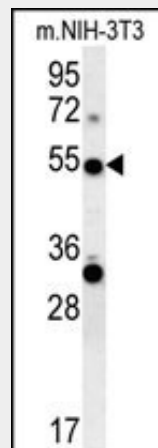
- [Western Blot](#)
- [Blocking Peptides](#)
- [Dot Blot](#)
- [Immunohistochemistry](#)
- [Immunofluorescence](#)
- [Immunoprecipitation](#)
- [Flow Cytometry](#)
- [Cell Culture](#)

TRAF3 Antibody (C-term) - Images



TRAF3 Antibody (C-term) (Cat. #AP13945b) western blot analysis in HL-60 cell line lysates

(35ug/lane). This demonstrates the TRAF3 antibody detected the TRAF3 protein (arrow).



TRAF3 Antibody (C-term) (Cat. #AP13945b) western blot analysis in mouse NIH-3T3 cell line lysates (35ug/lane). This demonstrates the TRAF3 antibody detected the TRAF3 protein (arrow).

TRAF3 Antibody (C-term) - Background

The protein encoded by this gene is a member of the TNF receptor associated factor (TRAF) protein family. TRAF proteins associate with, and mediate the signal transduction from, members of the TNF receptor (TNFR) superfamily. This protein participates in the signal transduction of CD40, a TNFR family member important for the activation of the immune response. This protein is found to be a critical component of the lymphotoxin-beta receptor (LTbetaR) signaling complex, which induces NF-kappaB activation and cell death initiated by LTbeta ligation. Epstein-Barr virus encoded latent infection membrane protein-1 (LMP1) can interact with this and several other members of the TRAF family, which may be essential for the oncogenic effects of LMP1. Three alternatively spliced transcript variants encoding two distinct isoforms have been reported.

TRAF3 Antibody (C-term) - References

Bailey, S.D., et al. Diabetes Care 33(10):2250-2253(2010)
Song, Y.J., et al. Virus Genes 41(2):174-180(2010)
Perez de Diego, R., et al. Immunity 33(3):400-411(2010)
del Rio-Espinola, A., et al. Pharmacogenomics 11(6):763-772(2010)
Sanjo, H., et al. J. Biol. Chem. 285(22):17148-17155(2010)