

**TRAF1 Antibody (N-term)**  
**Affinity Purified Rabbit Polyclonal Antibody (Pab)**  
**Catalog # AP13946A****Specification**

---

**TRAF1 Antibody (N-term) - Product Information**

Application	WB,E
Primary Accession	<a href="#">Q13077</a>
Other Accession	<a href="#">NP_005649.1</a> , <a href="#">NP_001177876.1</a> , <a href="#">NP_001177874.1</a>
Reactivity	Human, Mouse
Host	Rabbit
Clonality	Polyclonal
Isotype	Rabbit IgG
Calculated MW	46164
Antigen Region	55-83

**TRAF1 Antibody (N-term) - Additional Information****Gene ID** 7185**Other Names**

TNF receptor-associated factor 1, Epstein-Barr virus-induced protein 6, TRAF1, EBI6

**Target/Specificity**

This TRAF1 antibody is generated from rabbits immunized with a KLH conjugated synthetic peptide between 55-83 amino acids from the N-terminal region of human TRAF1.

**Dilution**

WB~~1:1000

E~~Use at an assay dependent concentration.

**Format**

Purified polyclonal antibody supplied in PBS with 0.09% (W/V) sodium azide. This antibody is purified through a protein A column, followed by peptide affinity purification.

**Storage**

Maintain refrigerated at 2-8°C for up to 2 weeks. For long term storage store at -20°C in small aliquots to prevent freeze-thaw cycles.

**Precautions**

TRAF1 Antibody (N-term) is for research use only and not for use in diagnostic or therapeutic procedures.

**TRAF1 Antibody (N-term) - Protein Information****Name** TRAF1

## Synonyms EBI6

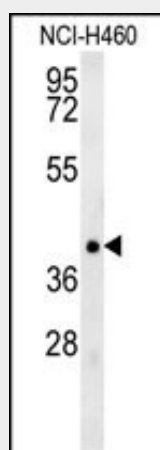
**Function** Adapter molecule that regulates the activation of NF-kappa-B and JNK. Plays a role in the regulation of cell survival and apoptosis. The heterotrimer formed by TRAF1 and TRAF2 is part of a E3 ubiquitin- protein ligase complex that promotes ubiquitination of target proteins, such as MAP3K14. The TRAF1/TRAF2 complex recruits the antiapoptotic E3 protein-ubiquitin ligases BIRC2 and BIRC3 to TNFRSF1B/TNFR2.

## TRAF1 Antibody (N-term) - Protocols

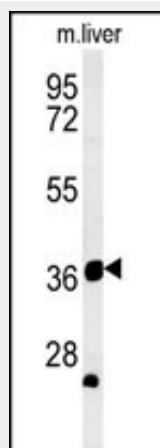
Provided below are standard protocols that you may find useful for product applications.

- [Western Blot](#)
- [Blocking Peptides](#)
- [Dot Blot](#)
- [Immunohistochemistry](#)
- [Immunofluorescence](#)
- [Immunoprecipitation](#)
- [Flow Cytometry](#)
- [Cell Culture](#)

## TRAF1 Antibody (N-term) - Images



TRAF1 Antibody (N-term) (Cat. #AP13946a) western blot analysis in NCI-H460 cell line lysates (35ug/lane). This demonstrates the TRAF1 antibody detected the TRAF1 protein (arrow).



TRAF1 Antibody (N-term) (Cat. #AP13946a) western blot analysis in mouse liver tissue lysates (35ug/lane). This demonstrates the TRAF1 antibody detected the TRAF1 protein (arrow).

#### **TRAF1 Antibody (N-term) - Background**

The protein encoded by this gene is a member of the TNF receptor (TNFR) associated factor (TRAF) protein family. TRAF proteins associate with, and mediate the signal transduction from various receptors of the TNFR superfamily. This protein and TRAF2 form a heterodimeric complex, which is required for TNF-alpha-mediated activation of MAPK8/JNK and NF-kappaB. The protein complex formed by this protein and TRAF2 also interacts with inhibitor-of-apoptosis proteins (IAPs), and thus mediates the anti-apoptotic signals from TNF receptors. The expression of this protein can be induced by Epstein-Barr virus (EBV). EBV infection membrane protein 1 (LMP1) is found to interact with this and other TRAF proteins; this interaction is thought to link LMP1-mediated B lymphocyte transformation to the signal transduction from TNFR family receptors. Three transcript variants encoding two different isoforms have been found for this gene.

#### **TRAF1 Antibody (N-term) - References**

Bailey, S.D., et al. Diabetes Care 33(10):2250-2253(2010)  
Plant, D., et al. Ann. Rheum. Dis. 69(8):1548-1553(2010)  
Stahl, E.A., et al. Nat. Genet. 42(6):508-514(2010)  
Tan, R.J., et al. Ann. Rheum. Dis. 69(6):1029-1035(2010)  
Vuong, M.T., et al. PLoS ONE 5 (5), E10559 (2010) :