

WBS16 Antibody (N-term)
Affinity Purified Rabbit Polyclonal Antibody (Pab)
Catalog # AP13957A

Specification

WBS16 Antibody (N-term) - Product Information

Application	WB,E
Primary Accession	O96I51
Other Accession	NP_110425.1
Reactivity	Human, Hamster
Host	Rabbit
Clonality	Polyclonal
Isotype	Rabbit IgG
Calculated MW	49898
Antigen Region	15-44

WBS16 Antibody (N-term) - Additional Information

Gene ID 81554

Other Names

Williams-Beuren syndrome chromosomal region 16 protein, RCC1-like G exchanging factor-like protein, WBSCR16

Target/Specificity

This WBS16 antibody is generated from rabbits immunized with a KLH conjugated synthetic peptide between 15-44 amino acids from the N-terminal region of human WBS16.

Dilution

WB~~1:1000

E~~Use at an assay dependent concentration.

Format

Purified polyclonal antibody supplied in PBS with 0.09% (W/V) sodium azide. This antibody is purified through a protein A column, followed by peptide affinity purification.

Storage

Maintain refrigerated at 2-8°C for up to 2 weeks. For long term storage store at -20°C in small aliquots to prevent freeze-thaw cycles.

Precautions

WBS16 Antibody (N-term) is for research use only and not for use in diagnostic or therapeutic procedures.

WBS16 Antibody (N-term) - Protein Information

Name RCC1L ([HGNC:14948](#))

Function Guanine nucleotide exchange factor (GEF) for mitochondrial dynamin-related GTPase OPA1. Activates OPA1, by exchanging bound GDP for free GTP, and drives OPA1 and MFN1-dependent mitochondrial fusion (PubMed:[28746876](#)). Plays an essential role in mitochondrial ribosome biogenesis. As a component of a functional protein-RNA module, consisting of RCC1L, NGRN, RPUSD3, RPUSD4, TRUB2, FASTKD2 and 16S mitochondrial ribosomal RNA (16S mt-rRNA), controls 16S mt-rRNA abundance and is required for intra-mitochondrial translation of core subunits of the oxidative phosphorylation system (PubMed:[27667664](#)).

Cellular Location

Mitochondrion membrane [Isoform 2]: Mitochondrion inner membrane

Tissue Location

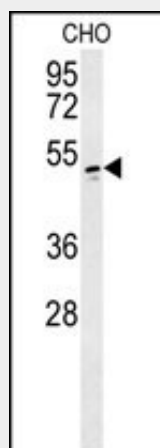
Ubiquitous..

WBS16 Antibody (N-term) - Protocols

Provided below are standard protocols that you may find useful for product applications.

- [Western Blot](#)
- [Blocking Peptides](#)
- [Dot Blot](#)
- [Immunohistochemistry](#)
- [Immunofluorescence](#)
- [Immunoprecipitation](#)
- [Flow Cytometry](#)
- [Cell Culture](#)

WBS16 Antibody (N-term) - Images



WBS16 Antibody (N-term) (Cat. #AP13957a) western blot analysis in CHO cell line lysates (35ug/lane). This demonstrates the WBS16 antibody detected the WBS16 protein (arrow).

WBS16 Antibody (N-term) - Background

This gene encodes an RCC1-like G-exchanging factor. It is deleted in Williams syndrome, a multisystem developmental disorder caused by the deletion of contiguous genes at 7q11.23. [provided by RefSeq].

WBS16 Antibody (N-term) - References

Merla, G., et al. Hum. Genet. 110(5):429-438(2002)