

**FAM198B Antibody (Center)**  
**Affinity Purified Rabbit Polyclonal Antibody (Pab)**  
**Catalog # AP13966c****Specification**

---

**FAM198B Antibody (Center) - Product Information**

Application	WB,E
Primary Accession	<a href="#">Q6UWH4</a>
Other Accession	<a href="#">NP_001121896.1</a> , <a href="#">NP_057697.2</a> , <a href="#">NP_001026870.2</a>
Reactivity	Human
Host	Rabbit
Clonality	Polyclonal
Isotype	Rabbit IgG
Antigen Region	275-304

**FAM198B Antibody (Center) - Additional Information****Gene ID** 51313**Other Names**

Protein FAM198B, Expressed in nerve and epithelium during development, FAM198B, C4orf18, ENED

**Target/Specificity**

This C4orf18 antibody is generated from rabbits immunized with a KLH conjugated synthetic peptide between 275-304 amino acids from the Central region of human C4orf18.

**Dilution**

WB~~1:1000

E~~Use at an assay dependent concentration.

**Format**

Purified polyclonal antibody supplied in PBS with 0.09% (W/V) sodium azide. This antibody is purified through a protein A column, followed by peptide affinity purification.

**Storage**

Maintain refrigerated at 2-8°C for up to 2 weeks. For long term storage store at -20°C in small aliquots to prevent freeze-thaw cycles.

**Precautions**

FAM198B Antibody (Center) is for research use only and not for use in diagnostic or therapeutic procedures.

**FAM198B Antibody (Center) - Protein Information****Name** GASK1B ([HGNC:25312](#))

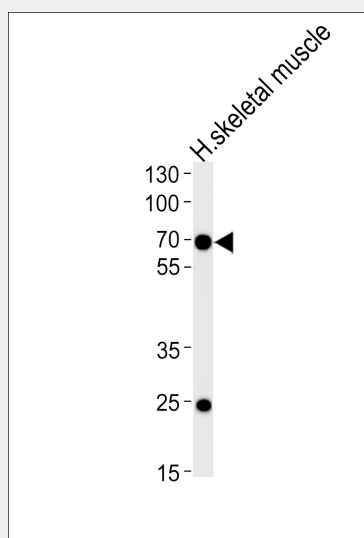
**Cellular Location**

Golgi apparatus membrane; Single-pass type II membrane protein

**FAM198B Antibody (Center) - Protocols**

Provided below are standard protocols that you may find useful for product applications.

- [Western Blot](#)
- [Blocking Peptides](#)
- [Dot Blot](#)
- [Immunohistochemistry](#)
- [Immunofluorescence](#)
- [Immunoprecipitation](#)
- [Flow Cytometry](#)
- [Cell Culture](#)

**FAM198B Antibody (Center) - Images**

Western blot analysis of lysate from human skeletal muscle tissue lysate, using FAM198B Antibody (Center)(Cat. #AP13966c). AP13966c was diluted at 1:1000 at each lane. A goat anti-rabbit IgG H&L(HRP) at 1:5000 dilution was used as the secondary antibody. Lysate at 35ug per lane.

**FAM198B Antibody (Center) - Background**

The exact function of this protein remains unknown.

**FAM198B Antibody (Center) - References**

Clark, H.F., et al. Genome Res. 13(10):2265-2270(2003)  
Simpson, J.C., et al. EMBO Rep. 1(3):287-292(2000)