

NOX5 Antibody (C-term)
Affinity Purified Rabbit Polyclonal Antibody (Pab)
Catalog # AP13968b**Specification**

NOX5 Antibody (C-term) - Product Information

Application	WB,E
Primary Accession	Q96PH1
Other Accession	NP_001171708.1 , NP_078781.3 , NP_001171709.1
Reactivity	Human
Host	Rabbit
Clonality	Polyclonal
Isotype	Rabbit IgG
Calculated MW	86439
Antigen Region	680-709

NOX5 Antibody (C-term) - Additional Information**Gene ID** 79400**Other Names**

NADPH oxidase 5, 163-, NOX5

Target/Specificity

This NOX5 antibody is generated from rabbits immunized with a KLH conjugated synthetic peptide between 680-709 amino acids from the C-terminal region of human NOX5.

Dilution

WB~~1:1000

E~~Use at an assay dependent concentration.

Format

Purified polyclonal antibody supplied in PBS with 0.09% (W/V) sodium azide. This antibody is purified through a protein A column, followed by peptide affinity purification.

Storage

Maintain refrigerated at 2-8°C for up to 2 weeks. For long term storage store at -20°C in small aliquots to prevent freeze-thaw cycles.

Precautions

NOX5 Antibody (C-term) is for research use only and not for use in diagnostic or therapeutic procedures.

NOX5 Antibody (C-term) - Protein Information**Name** NOX5 ([HGNC:14874](#))

Function Calcium-dependent NADPH oxidase that catalyzes the generation of superoxide from molecular oxygen utilizing NADPH as an electron donor (PubMed:[12686516](#)). May play a role in cell growth and apoptosis (PubMed:[12686516](#)).

Cellular Location

[Isoform v2]: Endoplasmic reticulum. Cell membrane; Multi-pass membrane protein.

Note=Calcium-sensitive association and dissociation between the N- and C-terminal domains appears to facilitate its localization to the cell membrane

Tissue Location

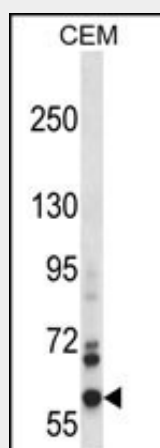
Mainly expressed in pachytene spermatocytes of testis and in lymphocyte-rich areas of spleen and lymph nodes. Also detected in ovary, placenta, pancreas, cardiac fibroblasts. Expressed in B-cells and prostate malignant cells. [Isoform v2]: Expressed in microvascular endothelial cells (at protein level) (PubMed:17275676). Expressed in testis (PubMed:11483596). Expressed in endothelial cells and pulmonary artery smooth muscle cells (PubMed:17275676, PubMed:22427510) [Isoform v4]: Expressed in endothelial cells and pulmonary artery smooth muscle cells.

NOX5 Antibody (C-term) - Protocols

Provided below are standard protocols that you may find useful for product applications.

- [Western Blot](#)
- [Blocking Peptides](#)
- [Dot Blot](#)
- [Immunohistochemistry](#)
- [Immunofluorescence](#)
- [Immunoprecipitation](#)
- [Flow Cytometry](#)
- [Cell Culture](#)

NOX5 Antibody (C-term) - Images



NOX5 Antibody (C-term) (Cat. #AP13968b) western blot analysis in CEM cell line lysates (35ug/lane). This demonstrates the NOX5 antibody detected the NOX5 protein (arrow).

NOX5 Antibody (C-term) - Background

Calcium-dependent NADPH oxidase that generates superoxide. Also functions as a calcium-dependent proton channel and may regulate redox-dependent processes in lymphocytes and spermatozoa. May play a role in cell growth and apoptosis.