

**PNPLA4 Antibody (C-term)**  
**Affinity Purified Rabbit Polyclonal Antibody (Pab)**  
**Catalog # AP13971b****Specification**

---

**PNPLA4 Antibody (C-term) - Product Information**

|                   |  |
|-------------------|--|
| Application       | WB, IHC-P,E  |
| Primary Accession | <a href="#">P41247</a>   |
| Other Accession   | <a href="#">NP_004641.1</a> , <a href="#">NP_001135861.1</a> ,<br><a href="#">NP_001166143.1</a> |
| Reactivity        | Human  |
| Host              | Rabbit   |
| Clonality         | Polyclonal   |
| Isotype           | Rabbit IgG   |
| Calculated MW     | 27980  |
| Antigen Region    | 171-199  |

**PNPLA4 Antibody (C-term) - Additional Information****Gene ID** 8228**Other Names**

Patatin-like phospholipase domain-containing protein 4, Protein GS2, PNPLA4, DXS1283E, GS2

**Target/Specificity**

This PNPLA4 antibody is generated from rabbits immunized with a KLH conjugated synthetic peptide between 171-199 amino acids from the C-terminal region of human PNPLA4.

**Dilution**WB~~1:1000  
IHC-P~~1:10~50**Format**

Purified polyclonal antibody supplied in PBS with 0.09% (W/V) sodium azide. This antibody is purified through a protein A column, followed by peptide affinity purification.

**Storage**

Maintain refrigerated at 2-8°C for up to 2 weeks. For long term storage store at -20°C in small aliquots to prevent freeze-thaw cycles.

**Precautions**

PNPLA4 Antibody (C-term) is for research use only and not for use in diagnostic or therapeutic procedures.

**PNPLA4 Antibody (C-term) - Protein Information****Name** PNPLA4 ([HGNC:24887](#))

**Function** Has abundant triacylglycerol lipase activity (PubMed:[15364929](#), PubMed:[16150821](#), PubMed:[17603008](#)). Transfers fatty acid from triglyceride to retinol, hydrolyzes retinylesters, and generates 1,3-diacylglycerol from triglycerides (PubMed:[17603008](#)). Additionally possesses acylglycerol transacylase and phospholipase A2 activities (PubMed:[15364929](#), PubMed:[17603008](#)).

**Cellular Location**

Mitochondrion.

**Tissue Location**

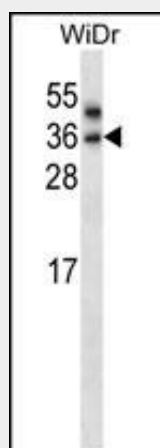
Expressed in all tissues examined, including heart, brain, placenta, lung, liver, muscle, kidney, pancreas and spleen

**PNPLA4 Antibody (C-term) - Protocols**

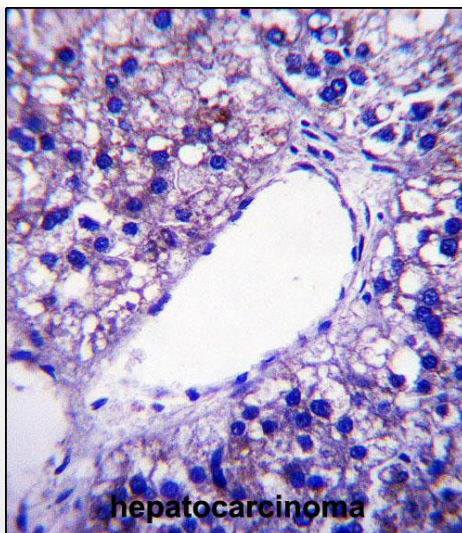
Provided below are standard protocols that you may find useful for product applications.

- [Western Blot](#)
- [Blocking Peptides](#)
- [Dot Blot](#)
- [Immunohistochemistry](#)
- [Immunofluorescence](#)
- [Immunoprecipitation](#)
- [Flow Cytometry](#)
- [Cell Culture](#)

**PNPLA4 Antibody (C-term) - Images**



PNPLA4 Antibody (C-term) (Cat. #AP13971b) western blot analysis in WiDr cell line lysates (35ug/lane). This demonstrates the PNPLA4 antibody detected the PNPLA4 protein (arrow).



PNPLA4 Antibody (C-term) (Cat. #AP13971b) immunohistochemistry analysis in formalin fixed and paraffin embedded human hepatocarcinoma followed by peroxidase conjugation of the secondary antibody and DAB staining. This data demonstrates the use of PNPLA4 Antibody (C-term) for immunohistochemistry. Clinical relevance has not been evaluated.

#### **PNPLA4 Antibody (C-term) - Background**

This gene encodes a member of the patatin-like family of phospholipases. The encoded enzyme has both triacylglycerol lipase and transacylase activities and may be involved in adipocyte triglyceride homeostasis. Alternate splicing results in multiple transcript variants. A pseudogene of this gene is found on chromosome Y.

#### **PNPLA4 Antibody (C-term) - References**

Gao, J.G., et al. Mol. Genet. Metab. 96(4):253-260(2009)  
Kienesberger, P.C., et al. J. Lipid Res. 50 SUPPL, S63-S68 (2009) :  
Johansson, L.E., et al. PLoS ONE 4 (4), E5327 (2009) :  
Gao, J.G., et al. Biochem. Biophys. Res. Commun. 360(2):501-506(2007)  
Wilson, P.A., et al. J. Lipid Res. 47(9):1940-1949(2006)