

**HTRA3 Antibody (Center)**  
**Affinity Purified Rabbit Polyclonal Antibody (Pab)**  
**Catalog # AP13989c****Specification**

---

**HTRA3 Antibody (Center) - Product Information**

Application	WB, IHC-P,E
Primary Accession	<a href="#">P83110</a>
Other Accession	<a href="#">NP_444272.1</a>
Reactivity	Human, Mouse
Host	Rabbit
Clonality	Polyclonal
Isotype	Rabbit IgG
Calculated MW	48608
Antigen Region	262-290

**HTRA3 Antibody (Center) - Additional Information****Gene ID** 94031**Other Names**

Serine protease HTRA3, 3421-, High-temperature requirement factor A3, Pregnancy-related serine protease, HTRA3, PRSP

**Target/Specificity**

This HTRA3 antibody is generated from rabbits immunized with a KLH conjugated synthetic peptide between 262-290 amino acids from the Central region of human HTRA3.

**Dilution**

WB~~1:1000

IHC-P~~1:10~50

**Format**

Purified polyclonal antibody supplied in PBS with 0.09% (W/V) sodium azide. This antibody is purified through a protein A column, followed by peptide affinity purification.

**Storage**

Maintain refrigerated at 2-8°C for up to 2 weeks. For long term storage store at -20°C in small aliquots to prevent freeze-thaw cycles.

**Precautions**

HTRA3 Antibody (Center) is for research use only and not for use in diagnostic or therapeutic procedures.

**HTRA3 Antibody (Center) - Protein Information****Name** HTRA3

## Synonyms PRSP

**Function** Serine protease that cleaves beta-casein/CSN2 as well as several extracellular matrix (ECM) proteoglycans such as decorin/DCN, biglycan/BGN and fibronectin/FN1. Inhibits signaling mediated by TGF- beta family proteins possibly indirectly by degradation of these ECM proteoglycans (By similarity). May act as a tumor suppressor. Negatively regulates, in vitro, trophoblast invasion during placental development and may be involved in the development of the placenta in vivo. May also have a role in ovarian development, granulosa cell differentiation and luteinization (PubMed:[21321049](#), PubMed:[2229724](#)).

## Cellular Location

Secreted. Note=Secretion increased during decidualization of endometrial stromal cells

## Tissue Location

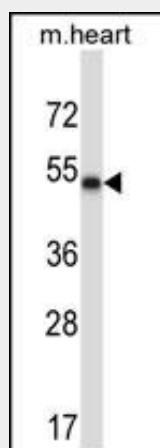
Widely expressed, with highest levels in both adult and fetal heart, ovary, uterus placenta, and bladder. In the endometrium, expressed in epithelial glands and the stroma. Also present in leukocytes. Isoform 1 is predominant in heart and skeletal muscle, whereas isoform 2 is predominant in placenta and kidney

## HTRA3 Antibody (Center) - Protocols

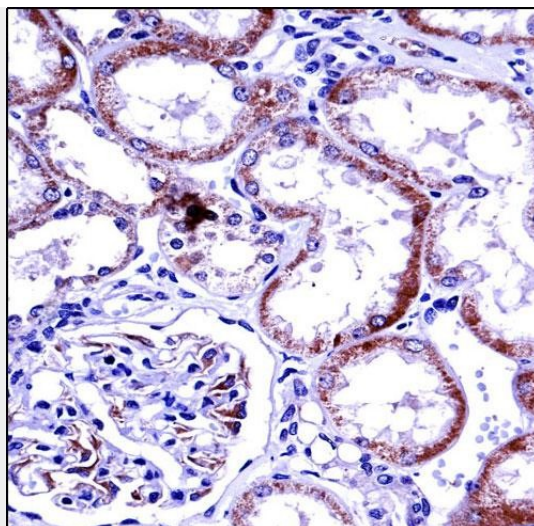
Provided below are standard protocols that you may find useful for product applications.

- [Western Blot](#)
- [Blocking Peptides](#)
- [Dot Blot](#)
- [Immunohistochemistry](#)
- [Immunofluorescence](#)
- [Immunoprecipitation](#)
- [Flow Cytometry](#)
- [Cell Culture](#)

## HTRA3 Antibody (Center) - Images



HTRA3 Antibody (Center) (Cat. #AP13989c) western blot analysis in mouse heart tissue lysates (35ug/lane). This demonstrates the HTRA3 antibody detected the HTRA3 protein (arrow).



HTRA3 Antibody (Center) (AP13989c) immunohistochemistry analysis in formalin fixed and paraffin embedded human kidney tissue followed by peroxidase conjugation of the secondary antibody and DAB staining. This data demonstrates the use of HTRA3 Antibody (Center) for immunohistochemistry. Clinical relevance has not been evaluated.

#### **HTRA3 Antibody (Center) - Background**

HTRA3 is probable serine protease.

#### **HTRA3 Antibody (Center) - References**

- Zurawa-Janicka, D., et al. Expert Opin. Ther. Targets 14(7):665-679(2010)  
Rose, J.E., et al. Mol. Med. 16 (7-8), 247-253 (2010) :  
Beleford, D., et al. J. Biol. Chem. 285(16):12011-12027(2010)  
Theoleyre, S., et al. Biochem. Biophys. Res. Commun. 394(3):453-458(2010)  
Beleford, D., et al. Clin. Cancer Res. 16(2):398-409(2010)