

HES1 Antibody (N-term)
Affinity Purified Rabbit Polyclonal Antibody (Pab)
Catalog # AP14023A**Specification**

HES1 Antibody (N-term) - Product Information

Application	WB,E
Primary Accession	Q14469
Other Accession	Q04666 , P35428 , Q3ZBG4 , NP_005515.1
Reactivity	Human
Predicted	Bovine, Mouse, Rat
Host	Rabbit
Clonality	Polyclonal
Isotype	Rabbit IgG
Calculated MW	29541
Antigen Region	3-32

HES1 Antibody (N-term) - Additional Information**Gene ID** 3280**Other Names**

Transcription factor HES-1, Class B basic helix-loop-helix protein 39, bHLHb39, Hairy and enhancer of split 1, Hairy homolog, Hairy-like protein, hHL, HES1, BHLHB39, HL, HRY

Target/Specificity

This HES1 antibody is generated from rabbits immunized with a KLH conjugated synthetic peptide between 3-32 amino acids from the N-terminal region of human HES1.

Dilution

WB~~1:1000

E~~Use at an assay dependent concentration.

Format

Purified polyclonal antibody supplied in PBS with 0.09% (W/V) sodium azide. This antibody is purified through a protein A column, followed by peptide affinity purification.

Storage

Maintain refrigerated at 2-8°C for up to 2 weeks. For long term storage store at -20°C in small aliquots to prevent freeze-thaw cycles.

Precautions

HES1 Antibody (N-term) is for research use only and not for use in diagnostic or therapeutic procedures.

HES1 Antibody (N-term) - Protein Information**Name** HES1

Synonyms BHLHB39, HL, HRY

Function Transcriptional repressor of genes that require a bHLH protein for their transcription. May act as a negative regulator of myogenesis by inhibiting the functions of MYOD1 and ASH1. Binds DNA on N-box motifs: 5'-CACNAG-3' with high affinity and on E-box motifs: 5'-CANNTG-3' with low affinity (By similarity). May play a role in a functional FA core complex response to DNA cross-link damage, being required for the stability and nuclear localization of FA core complex proteins, as well as for FANCD2 monoubiquitination in response to DNA damage.

Cellular Location

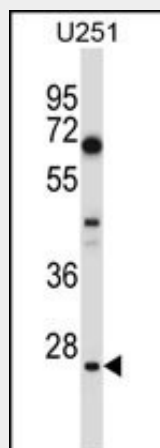
Nucleus.

HES1 Antibody (N-term) - Protocols

Provided below are standard protocols that you may find useful for product applications.

- [Western Blot](#)
- [Blocking Peptides](#)
- [Dot Blot](#)
- [Immunohistochemistry](#)
- [Immunofluorescence](#)
- [Immunoprecipitation](#)
- [Flow Cytometry](#)
- [Cell Culture](#)

HES1 Antibody (N-term) - Images



HES1 Antibody (N-term) (Cat. #AP14023a) western blot analysis in U251 cell line lysates (35ug/lane). This demonstrates the HES1 antibody detected the HES1 protein (arrow).

HES1 Antibody (N-term) - Background

This protein belongs to the basic helix-loop-helix family of transcription factors. It is a transcriptional repressor of genes that require a bHLH protein for their transcription. The protein has a particular type of basic domain that contains a helix interrupting protein that binds to the N-box rather than the canonical E-box.

HES1 Antibody (N-term) - References

Espinosa, L., et al. Cancer Cell 18(3):268-281(2010)
Wang, X., et al. J. Cancer Res. Clin. Oncol. 136(7):989-996(2010)
Sang, L., et al. Trends Mol Med 16(1):17-26(2010)
Duan, L., et al. Front Biosci (Elite Ed) 2, 1065-1072 (2010) :
Coad, R.A., et al. Biochem. Cell Biol. 87(6):975-987(2009)