

ODC1 Antibody (C-term)
Affinity Purified Rabbit Polyclonal Antibody (Pab)
Catalog # AP14027B**Specification**

ODC1 Antibody (C-term) - Product Information

Application	WB,E
Primary Accession	P11926
Other Accession	P27117 , NP_002530.1
Reactivity	Human
Predicted	Bovine
Host	Rabbit
Clonality	Polyclonal
Isotype	Rabbit IgG
Calculated MW	51148
Antigen Region	323-352

ODC1 Antibody (C-term) - Additional Information**Gene ID** 4953**Other Names**

Ornithine decarboxylase, ODC, ODC1

Target/Specificity

This ODC1 antibody is generated from rabbits immunized with a KLH conjugated synthetic peptide between 323-352 amino acids from the C-terminal region of human ODC1.

Dilution

WB~~1:1000

E~~Use at an assay dependent concentration.

Format

Purified polyclonal antibody supplied in PBS with 0.09% (W/V) sodium azide. This antibody is purified through a protein A column, followed by peptide affinity purification.

Storage

Maintain refrigerated at 2-8°C for up to 2 weeks. For long term storage store at -20°C in small aliquots to prevent freeze-thaw cycles.

Precautions

ODC1 Antibody (C-term) is for research use only and not for use in diagnostic or therapeutic procedures.

ODC1 Antibody (C-term) - Protein Information**Name** ODC1

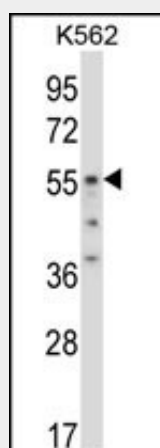
Function Catalyzes the first and rate-limiting step of polyamine biosynthesis that converts ornithine into putrescine, which is the precursor for the polyamines, spermidine and spermine. Polyamines are essential for cell proliferation and are implicated in cellular processes, ranging from DNA replication to apoptosis.

ODC1 Antibody (C-term) - Protocols

Provided below are standard protocols that you may find useful for product applications.

- [Western Blot](#)
- [Blocking Peptides](#)
- [Dot Blot](#)
- [Immunohistochemistry](#)
- [Immunofluorescence](#)
- [Immunoprecipitation](#)
- [Flow Cytometry](#)
- [Cell Culture](#)

ODC1 Antibody (C-term) - Images



ODC1 Antibody (C-term) (Cat. #AP14027b) western blot analysis in K562 cell line lysates (35ug/lane). This demonstrates the ODC1 antibody detected the ODC1 protein (arrow).

ODC1 Antibody (C-term) - Background

This gene encodes the rate-limiting enzyme of the polyamine biosynthesis pathway which catalyzes ornithine to putrescine. The activity level for the enzyme varies in response to growth-promoting stimuli and exhibits a high turnover rate in comparison to other mammalian proteins. Originally localized to both chromosomes 2 and 7, the gene encoding this enzyme has been determined to be located on 2p25, with a pseudogene located on 7q31-qter.

ODC1 Antibody (C-term) - References

Chaturvedi, R., et al. Gastroenterology 139(5):1686-1698(2010)
Zell, J.A., et al. J. Natl. Cancer Inst. 102(19):1513-1516(2010)
Geerts, D., et al. Int. J. Cancer 126(9):2012-2024(2010)
Hughes, D., et al. Colorectal Dis (2010) In press :

Grimminger, P.P., et al. Clin Lung Cancer 11(2):114-119(2010)