

CDH8 Antibody (N-term)
Affinity Purified Rabbit Polyclonal Antibody (Pab)
Catalog # AP1402a**Specification**

CDH8 Antibody (N-term) - Product Information

Application	WB, IHC-P,E
Primary Accession	P55286
Reactivity	Human
Host	Rabbit
Clonality	Polyclonal
Isotype	Rabbit IgG
Antigen Region	33-63

CDH8 Antibody (N-term) - Additional Information**Gene ID** 1006**Other Names**

Cadherin-8, CDH8

Target/Specificity

This CDH8 antibody is generated from rabbits immunized with a KLH conjugated synthetic peptide between 33-63 amino acids from the N-terminal region of human CDH8.

Dilution

WB~~1:1000

IHC-P~~1:10~50

E~~Use at an assay dependent concentration.

Format

Purified polyclonal antibody supplied in PBS with 0.09% (W/V) sodium azide. This antibody is purified through a protein A column, followed by peptide affinity purification.

Storage

Maintain refrigerated at 2-8°C for up to 2 weeks. For long term storage store at -20°C in small aliquots to prevent freeze-thaw cycles.

Precautions

CDH8 Antibody (N-term) is for research use only and not for use in diagnostic or therapeutic procedures.

CDH8 Antibody (N-term) - Protein Information**Name** CDH8

Function Cadherins are calcium-dependent cell adhesion proteins. They preferentially interact with themselves in a homophilic manner in connecting cells; cadherins may thus contribute to the

sorting of heterogeneous cell types.

Cellular Location

Cell membrane; Single-pass type I membrane protein

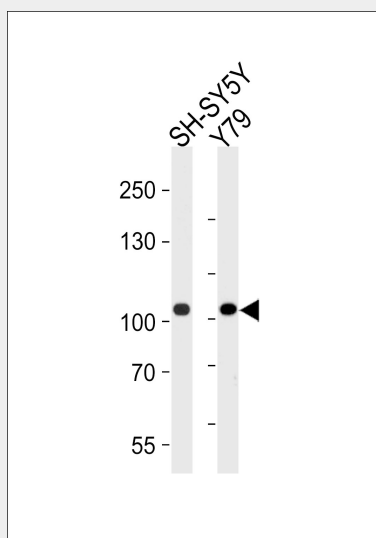
Tissue Location

Mainly expressed in brain. Found in certain nerve cell lines, such as retinoblasts, glioma cells and neuroblasts

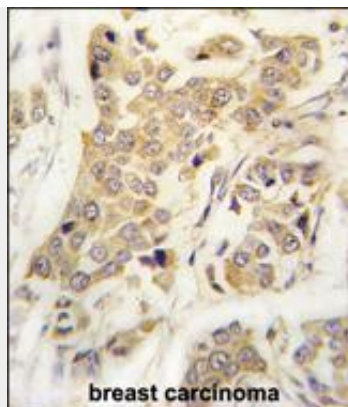
CDH8 Antibody (N-term) - Protocols

Provided below are standard protocols that you may find useful for product applications.

- [Western Blot](#)
- [Blocking Peptides](#)
- [Dot Blot](#)
- [Immunohistochemistry](#)
- [Immunofluorescence](#)
- [Immunoprecipitation](#)
- [Flow Cytometry](#)
- [Cell Culture](#)

CDH8 Antibody (N-term) - Images

Western blot analysis of lysates from SH-SY5Y, Y79 cell line (from left to right), using CDH8 Antibody (N-term)(Cat. #AP1402a). AP1402a was diluted at 1:1000 at each lane. A goat anti-rabbit IgG H&L(HRP) at 1:5000 dilution was used as the secondary antibody. Lysates at 35ug per lane.



Formalin-fixed and paraffin-embedded human breast carcinoma tissue reacted with CDH8 antibody (N-term) (Cat.#AP1402a), which was peroxidase-conjugated to the secondary antibody, followed by DAB staining. This data demonstrates the use of this antibody for immunohistochemistry; clinical relevance has not been evaluated.

CDH8 Antibody (N-term) - Background

CDH8 is a type II classical cadherin from the cadherin superfamily, integral membrane proteins that mediate calcium-dependent cell-cell adhesion. Mature cadherin proteins are composed of a large N-terminal extracellular domain, a single membrane-spanning domain, and a small, highly conserved C-terminal cytoplasmic domain. The extracellular domain consists of 5 subdomains, each containing a cadherin motif, and appears to determine the specificity of the protein's homophilic cell adhesion activity. Type II (atypical) cadherins are defined based on their lack of a HAV cell adhesion recognition sequence specific to type I cadherins. This particular cadherin is expressed in brain and is putatively involved in synaptic adhesion, axon outgrowth and guidance.

CDH8 Antibody (N-term) - References

Blaschke,S., Int. J. Cancer 101 (4), 327-334 (2002)
Shimoyama,Y., Biochem. J. 349 (PT 1), 159-167 (2000)