

**HCLS1 Antibody (C-term)**  
**Affinity Purified Rabbit Polyclonal Antibody (Pab)**  
**Catalog # AP14038b****Specification**

---

**HCLS1 Antibody (C-term) - Product Information**

Application	WB, IHC-P,E
Primary Accession	<a href="#">P14317</a>
Other Accession	<a href="#">NP_005326.2</a>
Reactivity	Human
Host	Rabbit
Clonality	Polyclonal
Isotype	Rabbit IgG
Calculated MW	54014
Antigen Region	362-391

**HCLS1 Antibody (C-term) - Additional Information****Gene ID** 3059**Other Names**

Hematopoietic lineage cell-specific protein, Hematopoietic cell-specific LYN substrate 1, LckBP1, p75, HCLS1, HS1

**Target/Specificity**

This HCLS1 antibody is generated from rabbits immunized with a KLH conjugated synthetic peptide between 362-391 amino acids from the C-terminal region of human HCLS1.

**Dilution**

WB~~1:1000

IHC-P~~1:10~50

E~~Use at an assay dependent concentration.

**Format**

Purified polyclonal antibody supplied in PBS with 0.09% (W/V) sodium azide. This antibody is purified through a protein A column, followed by peptide affinity purification.

**Storage**

Maintain refrigerated at 2-8°C for up to 2 weeks. For long term storage store at -20°C in small aliquots to prevent freeze-thaw cycles.

**Precautions**

HCLS1 Antibody (C-term) is for research use only and not for use in diagnostic or therapeutic procedures.

**HCLS1 Antibody (C-term) - Protein Information****Name** HCLS1

## Synonyms HS1

**Function** Substrate of the antigen receptor-coupled tyrosine kinase. Plays a role in antigen receptor signaling for both clonal expansion and deletion in lymphoid cells. May also be involved in the regulation of gene expression.

## Cellular Location

Membrane; Peripheral membrane protein. Cytoplasm. Mitochondrion

## Tissue Location

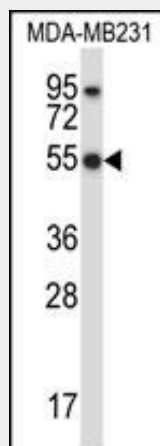
Expressed only in tissues and cells of hematopoietic origin

## HCLS1 Antibody (C-term) - Protocols

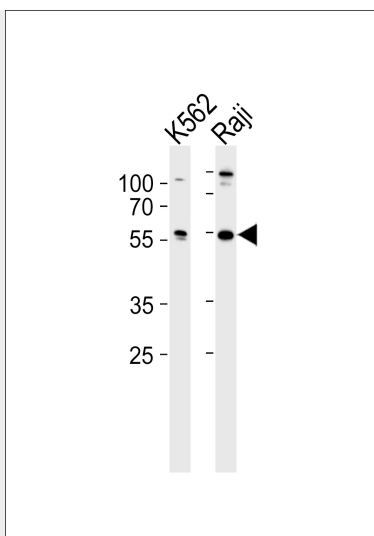
Provided below are standard protocols that you may find useful for product applications.

- [Western Blot](#)
- [Blocking Peptides](#)
- [Dot Blot](#)
- [Immunohistochemistry](#)
- [Immunofluorescence](#)
- [Immunoprecipitation](#)
- [Flow Cytometry](#)
- [Cell Culture](#)

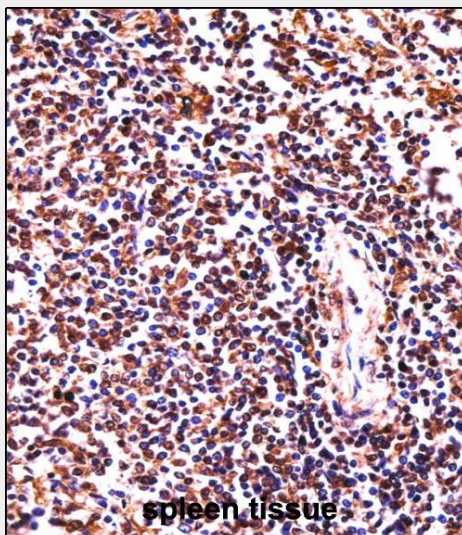
## HCLS1 Antibody (C-term) - Images



HCLS1 Antibody (C-term) (Cat. #AP14038b) western blot analysis in MDA-MB231 cell line lysates (35ug/lane). This demonstrates the HCLS1 antibody detected the HCLS1 protein (arrow).



Western blot analysis of lysates from K562, Raji cell line (from left to right), using HCLS1 Antibody (C-term)(Cat. #AP14038b). AP14038b was diluted at 1:1000 at each lane. A goat anti-rabbit IgG H&L(HRP) at 1:5000 dilution was used as the secondary antibody. Lysates at 35ug per lane.



HCLS1 Antibody (C-term) (AP14038b)immunohistochemistry analysis in formalin fixed and paraffin embedded human spleen tissue followed by peroxidase conjugation of the secondary antibody and DAB staining.This data demonstrates the use of HCLS1 Antibody (C-term) for immunohistochemistry. Clinical relevance has not been evaluated.

#### **HCLS1 Antibody (C-term) - Background**

Substrate of the antigen receptor-coupled tyrosine kinase. Plays a role in antigen receptor signaling for both clonal expansion and deletion in lymphoid cells. May also be involved in the regulation of gene expression.

#### **HCLS1 Antibody (C-term) - References**

- Muzio, M., et al. Leukemia 21(9):2067-2070(2007)
- Lim, J., et al. Cell 125(4):801-814(2006)
- Hao, J.J., et al. J. Biol. Chem. 280(45):37988-37994(2005)
- Tao, W.A., et al. Nat. Methods 2(8):591-598(2005)
- Brunati, A.M., et al. J. Biol. Chem. 280(22):21029-21035(2005)