

**GABPA Antibody (Center)**  
**Affinity Purified Rabbit Polyclonal Antibody (Pab)**  
**Catalog # AP14040c****Specification**

---

**GABPA Antibody (Center) - Product Information**

Application	WB,E
Primary Accession	<a href="#">Q06546</a>
Other Accession	<a href="#">NP_002031.2</a>
Reactivity	Human
Host	Rabbit
Clonality	Polyclonal
Isotype	Rabbit IgG
Calculated MW	51295
Antigen Region	283-311

**GABPA Antibody (Center) - Additional Information****Gene ID** 2551**Other Names**

GA-binding protein alpha chain, GABP subunit alpha, Nuclear respiratory factor 2 subunit alpha, Transcription factor E4TF1-60, GABPA, E4TF1A

**Target/Specificity**

This GABPA antibody is generated from rabbits immunized with a KLH conjugated synthetic peptide between 283-311 amino acids from the Central region of human GABPA.

**Dilution**

WB~~1:1000

E~~Use at an assay dependent concentration.

**Format**

Purified polyclonal antibody supplied in PBS with 0.09% (W/V) sodium azide. This antibody is purified through a protein A column, followed by peptide affinity purification.

**Storage**

Maintain refrigerated at 2-8°C for up to 2 weeks. For long term storage store at -20°C in small aliquots to prevent freeze-thaw cycles.

**Precautions**

GABPA Antibody (Center) is for research use only and not for use in diagnostic or therapeutic procedures.

**GABPA Antibody (Center) - Protein Information****Name** GABPA

**Synonyms** E4TF1A

**Function** Transcription factor capable of interacting with purine rich repeats (GA repeats). Positively regulates transcription of transcriptional repressor RHIT/ZNF205 (PubMed:[22306510](#)).

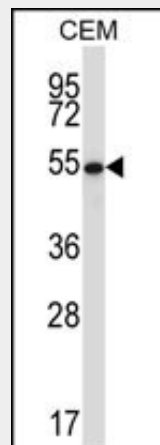
**Cellular Location**

Nucleus.

**GABPA Antibody (Center) - Protocols**

Provided below are standard protocols that you may find useful for product applications.

- [Western Blot](#)
- [Blocking Peptides](#)
- [Dot Blot](#)
- [Immunohistochemistry](#)
- [Immunofluorescence](#)
- [Immunoprecipitation](#)
- [Flow Cytometry](#)
- [Cell Culture](#)

**GABPA Antibody (Center) - Images**

GABPA Antibody (Center) (Cat. #AP14040c) western blot analysis in CEM cell line lysates (35ug/lane). This demonstrates the GABPA antibody detected the GABPA protein (arrow).

**GABPA Antibody (Center) - Background**

This gene encodes one of three GA-binding protein transcription factor subunits which functions as a DNA-binding subunit. Since this subunit shares identity with a subunit encoding the nuclear respiratory factor 2 gene, it is likely involved in activation of cytochrome oxidase expression and nuclear control of mitochondrial function. This subunit also shares identity with a subunit constituting the transcription factor E4TF1, responsible for expression of the adenovirus E4 gene. Because of its chromosomal localization and ability to form heterodimers with other polypeptides, this gene may play a role in the Down Syndrome phenotype. Two transcript variants encoding the same protein have been found for this gene.

**GABPA Antibody (Center) - References**

Henderson, A.J., et al. Thorax 65(10):897-902(2010)  
Eynon, N., et al. Physiol. Genomics 41(1):78-81(2010)  
Levy, S., et al. IUBMB Life 62(3):237-246(2010)  
Kim, Y.R., et al. J. Pathol. 220(4):446-451(2010)  
Bruni, F., et al. J. Biol. Chem. 285(6):3939-3948(2010)