

PCSK7 Antibody (C-term)
Affinity Purified Rabbit Polyclonal Antibody (Pab)
Catalog # AP14045B

Specification

PCSK7 Antibody (C-term) - Product Information

Application	WB,E
Primary Accession	Q16549
Other Accession	NP_004707.2
Reactivity	Human
Host	Rabbit
Clonality	Polyclonal
Isotype	Rabbit IgG
Calculated MW	86247
Antigen Region	692-721

PCSK7 Antibody (C-term) - Additional Information

Gene ID 9159

Other Names

Proprotein convertase subtilisin/kexin type 7, 3421-, Lymphoma proprotein convertase, Prohormone convertase 7, Proprotein convertase 7, PC7, Proprotein convertase 8, PC8, hPC8, Subtilisin/kexin-like protease PC7, PCSK7, LPC, PC7, PC8, SPC7

Target/Specificity

This PCSK7 antibody is generated from rabbits immunized with a KLH conjugated synthetic peptide between 692-721 amino acids from the C-terminal region of human PCSK7.

Dilution

WB~~1:1000

Format

Purified polyclonal antibody supplied in PBS with 0.09% (W/V) sodium azide. This antibody is purified through a protein A column, followed by peptide affinity purification.

Storage

Maintain refrigerated at 2-8°C for up to 2 weeks. For long term storage store at -20°C in small aliquots to prevent freeze-thaw cycles.

Precautions

PCSK7 Antibody (C-term) is for research use only and not for use in diagnostic or therapeutic procedures.

PCSK7 Antibody (C-term) - Protein Information

Name PCSK7

Synonyms LPC, PC7, PC8, SPC7

Function Serine endoprotease that processes various proproteins by cleavage at paired basic amino acids, recognizing the RXXX[KR]R consensus motif. Likely functions in the constitutive secretory pathway.

Cellular Location

Golgi apparatus, trans-Golgi network membrane; Single-pass type I membrane protein
Note=Seems to be localized intracellularly to the trans Golgi network

Tissue Location

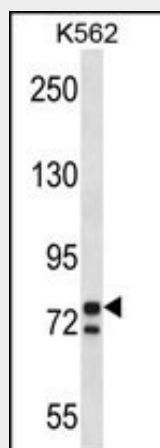
Expressed in spleen, thymus, prostate, testis, ovary, small intestine, colon and peripheral blood leukocyte

PCSK7 Antibody (C-term) - Protocols

Provided below are standard protocols that you may find useful for product applications.

- [Western Blot](#)
- [Blocking Peptides](#)
- [Dot Blot](#)
- [Immunohistochemistry](#)
- [Immunofluorescence](#)
- [Immunoprecipitation](#)
- [Flow Cytometry](#)
- [Cell Culture](#)

PCSK7 Antibody (C-term) - Images



PCSK7 Antibody (C-term) (Cat. #AP14045b) western blot analysis in K562 cell line lysates (35ug/lane). This demonstrates the PCSK7 antibody detected the PCSK7 protein (arrow).

PCSK7 Antibody (C-term) - Background

The protein encoded by this gene belongs to the subtilisin-like proprotein convertase family. The members of this family are proprotein convertases that process latent precursor proteins into their biologically active products. This encoded protein is a calcium-dependent serine endoprotease. It is structurally related to its family members, PACE and PACE4. This

protein is concentrated in the trans-Golgi network, associated with the membranes, and is not secreted. It can process proalbumin and is thought to be responsible for the activation of HIV envelope glycoproteins gp160 and gp140. This gene has been implicated in the transcriptional regulation of housekeeping genes. Multiple alternatively spliced transcripts are described for this gene but their full length nature is not yet known. Downstream of this gene's map location at 11q23-q24, nucleotides that match part of this gene's 3' end are duplicated and inverted. A translocation breakpoint associated with lymphoma occurs between this gene and its inverted counterpart.

PCSK7 Antibody (C-term) - References

Leonhardt, R.M., et al. J. Immunol. 184(6):2985-2998(2010)
McColl, B.K., et al. FASEB J. 21(4):1088-1098(2007)
Bruzzaniti, A., et al. Peptides 23(5):863-875(2002)
Fugere, M., et al. J. Biol. Chem. 277(10):7648-7656(2002)
Pearton, D.J., et al. Exp. Dermatol. 10(3):193-203(2001)