

**DLX4 Antibody (Center)**  
**Affinity Purified Rabbit Polyclonal Antibody (Pab)**  
**Catalog # AP14046c****Specification**

---

**DLX4 Antibody (Center) - Product Information**

Application	WB,E
Primary Accession	<a href="#">O92988</a>
Other Accession	<a href="#">NP_612138.1</a> , <a href="#">NP_001925.2</a>
Reactivity	Human
Host	Rabbit
Clonality	Polyclonal
Isotype	Rabbit IgG
Calculated MW	26263
Antigen Region	72-100

**DLX4 Antibody (Center) - Additional Information****Gene ID** 1748**Other Names**

Homeobox protein DLX-4, Beta protein 1, Homeobox protein DLX-7, Homeobox protein DLX-8, DLX4, BP1, DLX7, DLX8, DLX9

**Target/Specificity**

This DLX4 antibody is generated from rabbits immunized with a KLH conjugated synthetic peptide between 72-100 amino acids from the Central region of human DLX4.

**Dilution**

WB~~1:1000

E~~Use at an assay dependent concentration.

**Format**

Purified polyclonal antibody supplied in PBS with 0.09% (W/V) sodium azide. This antibody is purified through a protein A column, followed by peptide affinity purification.

**Storage**

Maintain refrigerated at 2-8°C for up to 2 weeks. For long term storage store at -20°C in small aliquots to prevent freeze-thaw cycles.

**Precautions**

DLX4 Antibody (Center) is for research use only and not for use in diagnostic or therapeutic procedures.

**DLX4 Antibody (Center) - Protein Information****Name** DLX4

**Synonyms** BP1, DLX7, DLX8, DLX9

**Function** May play a role in determining the production of hemoglobin S. May act as a repressor. During embryonic development, plays a role in palatogenesis.

**Cellular Location**

Nucleus.

**Tissue Location**

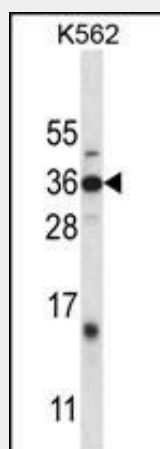
Expressed in leukemia cells and placenta. Also expressed in kidney and fetal liver.

**DLX4 Antibody (Center) - Protocols**

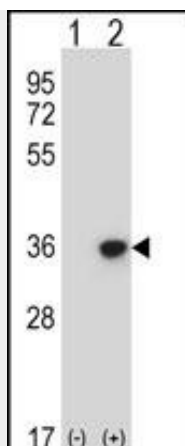
Provided below are standard protocols that you may find useful for product applications.

- [Western Blot](#)
- [Blocking Peptides](#)
- [Dot Blot](#)
- [Immunohistochemistry](#)
- [Immunofluorescence](#)
- [Immunoprecipitation](#)
- [Flow Cytometry](#)
- [Cell Culture](#)

**DLX4 Antibody (Center) - Images**



DLX4 Antibody (Center) (Cat. #AP14046c) western blot analysis in K562 cell line lysates (35ug/lane). This demonstrates the DLX4 antibody detected the DLX4 protein (arrow).



Western blot analysis of DLX4 (arrow) using rabbit polyclonal DLX4 Antibody (Center) (Cat. #AP14046c). 293 cell lysates (2 ug/lane) either nontransfected (Lane 1) or transiently transfected (Lane 2) with the DLX4 gene.

#### **DLX4 Antibody (Center) - Background**

Many vertebrate homeo box-containing genes have been identified on the basis of their sequence similarity with *Drosophila* developmental genes. Members of the *Dlx* gene family contain a homeobox that is related to that of Distal-less (*Dll*), a gene expressed in the head and limbs of the developing fruit fly. The Distal-less (*Dlx*) family of genes comprises at least 6 different members, DLX1-DLX6. The DLX proteins are postulated to play a role in forebrain and craniofacial development. Three transcript variants have been described for this gene, however, the full length nature of one variant has not been described. Studies of the two splice variants revealed that one encoded isoform functions as a repressor of the beta-globin gene while the other isoform lacks that function.

#### **DLX4 Antibody (Center) - References**

Jugessur, A., et al. PLoS ONE 5 (7), E11493 (2010) :  
Schwartz, A.M., et al. Mod. Pathol. 22(1):1-6(2009)  
Man, Y.G., et al. Cancer Biomark 5(1):9-17(2009)  
Cavalli, L.R., et al. Cancer Genet. Cytogenet. 187(1):19-24(2008)  
Vieira, A.R., et al. Genet. Med. 10(9):668-674(2008)