

BAG2 Antibody (C-term)
Affinity Purified Rabbit Polyclonal Antibody (Pab)
Catalog # AP14053b**Specification**

BAG2 Antibody (C-term) - Product Information

Application	WB, IHC-P,E
Primary Accession	O95816
Other Accession	O91YN9 , O3ZBG5 , NP_004273.1
Reactivity	Human
Predicted	Bovine, Mouse
Host	Rabbit
Clonality	Polyclonal
Isotype	Rabbit IgG
Calculated MW	23772
Antigen Region	148-176

BAG2 Antibody (C-term) - Additional Information**Gene ID** 9532**Other Names**

BAG family molecular chaperone regulator 2, BAG-2, Bcl-2-associated athanogene 2, BAG2

Target/Specificity

This BAG2 antibody is generated from rabbits immunized with a KLH conjugated synthetic peptide between 148-176 amino acids from the C-terminal region of human BAG2.

Dilution

WB~~1:1000

IHC-P~~1:10~50

E~~Use at an assay dependent concentration.

Format

Purified polyclonal antibody supplied in PBS with 0.09% (W/V) sodium azide. This antibody is purified through a protein A column, followed by peptide affinity purification.

Storage

Maintain refrigerated at 2-8°C for up to 2 weeks. For long term storage store at -20°C in small aliquots to prevent freeze-thaw cycles.

Precautions

BAG2 Antibody (C-term) is for research use only and not for use in diagnostic or therapeutic procedures.

BAG2 Antibody (C-term) - Protein Information**Name** BAG2

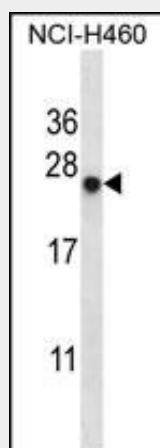
Function Co-chaperone for HSP70 and HSC70 chaperone proteins. Acts as a nucleotide-exchange factor (NEF) promoting the release of ADP from the HSP70 and HSC70 proteins thereby triggering client/substrate protein release (PubMed:[24318877](#), PubMed:[9873016](#)).

BAG2 Antibody (C-term) - Protocols

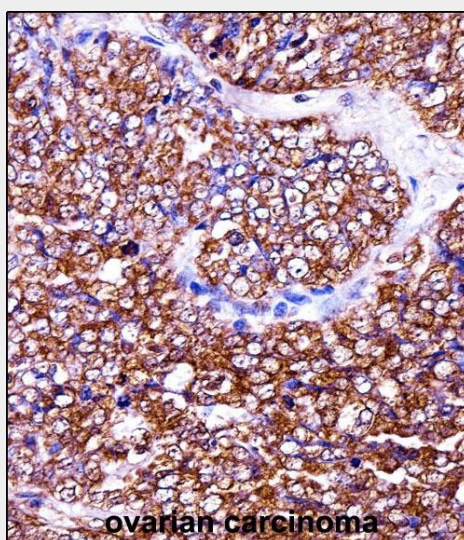
Provided below are standard protocols that you may find useful for product applications.

- [Western Blot](#)
- [Blocking Peptides](#)
- [Dot Blot](#)
- [Immunohistochemistry](#)
- [Immunofluorescence](#)
- [Immunoprecipitation](#)
- [Flow Cytometry](#)
- [Cell Culture](#)

BAG2 Antibody (C-term) - Images



BAG2 Antibody (C-term) (Cat. #AP14053b) western blot analysis in NCI-H460 cell line lysates (35ug/lane). This demonstrates the BAG2 antibody detected the BAG2 protein (arrow).



BAG2 Antibody (C-term) (AP14053b) immunohistochemistry analysis in formalin fixed and paraffin

embedded human ovarian carcinoma followed by peroxidase conjugation of the secondary antibody and DAB staining. This data demonstrates the use of BAG2 Antibody (C-term) for immunohistochemistry. Clinical relevance has not been evaluated.

BAG2 Antibody (C-term) - Background

BAG proteins compete with Hip for binding to the Hsc70/Hsp70 ATPase domain and promote substrate release. All the BAG proteins have an approximately 45-amino acid BAG domain near the C terminus but differ markedly in their N-terminal regions. The predicted BAG2 protein contains 211 amino acids. The BAG domains of BAG1, BAG2, and BAG3 interact specifically with the Hsc70 ATPase domain in vitro and in mammalian cells. All 3 proteins bind with high affinity to the ATPase domain of Hsc70 and inhibit its chaperone activity in a Hip-repressible manner. [provided by RefSeq].

BAG2 Antibody (C-term) - References

Arndt, V., et al. Mol. Biol. Cell 16(12):5891-5900(2005)
Dai, Q., et al. J. Biol. Chem. 280(46):38673-38681(2005)
Ueda, K., et al. J. Biol. Chem. 279(40):41815-41821(2004)
Ueda, K., et al. J. Biol. Chem. 279(40):41815-41821(2004)
Simpson, J.C., et al. EMBO Rep. 1(3):287-292(2000)

BAG2 Antibody (C-term) - Citations

- [Jumonji Domain Containing 5 \(JMJD5\) Associates with Spindle Microtubules and Is Required for Proper Mitosis.](#)