

**Nucleostemin (GNL3) Antibody (Center)**  
**Purified Rabbit Polyclonal Antibody (Pab)**  
**Catalog # AP1405c****Specification**

---

**Nucleostemin (GNL3) Antibody (Center) - Product Information**

Application	WB,E
Primary Accession	<a href="#">Q9BVP2</a>
Reactivity	Human
Host	Rabbit
Clonality	Polyclonal
Isotype	Rabbit IgG
Calculated MW	61993
Antigen Region	191-220

**Nucleostemin (GNL3) Antibody (Center) - Additional Information****Gene ID** 26354**Other Names**

Guanine nucleotide-binding protein-like 3, E2-induced gene 3 protein, Novel nucleolar protein 47, NNP47, Nucleolar GTP-binding protein 3, Nucleostemin, GNL3, E2IG3, NS

**Target/Specificity**

This Nucleostemin (GNL3) antibody is generated from rabbits immunized with a KLH conjugated synthetic peptide between 191-220 amino acids from the Central region of human Nucleostemin (GNL3).

**Dilution**

WB~~1:1000

E~~Use at an assay dependent concentration.

**Format**

Purified polyclonal antibody supplied in PBS with 0.09% (W/V) sodium azide. This antibody is prepared by Saturated Ammonium Sulfate (SAS) precipitation followed by dialysis against PBS.

**Storage**

Maintain refrigerated at 2-8°C for up to 2 weeks. For long term storage store at -20°C in small aliquots to prevent freeze-thaw cycles.

**Precautions**

Nucleostemin (GNL3) Antibody (Center) is for research use only and not for use in diagnostic or therapeutic procedures.

**Nucleostemin (GNL3) Antibody (Center) - Protein Information****Name** GNL3

**Synonyms** E2IG3, NS

**Function** May be required to maintain the proliferative capacity of stem cells. Stabilizes MDM2 by preventing its ubiquitination, and hence proteasomal degradation (By similarity).

**Cellular Location**

Nucleus {ECO:0000250|UniProtKB:Q811S9}. Nucleus, nucleolus. Note=Shuttles between the nucleus and nucleolus. {ECO:0000250|UniProtKB:Q811S9}

**Tissue Location**

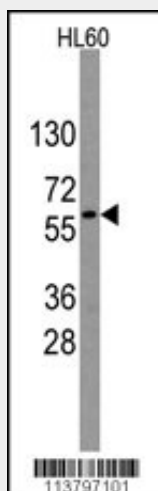
Increased levels in lung tissue in cancer patients.

### Nucleostemin (GNL3) Antibody (Center) - Protocols

Provided below are standard protocols that you may find useful for product applications.

- [Western Blot](#)
- [Blocking Peptides](#)
- [Dot Blot](#)
- [Immunohistochemistry](#)
- [Immunofluorescence](#)
- [Immunoprecipitation](#)
- [Flow Cytometry](#)
- [Cell Culture](#)

### Nucleostemin (GNL3) Antibody (Center) - Images



Western blot analysis of anti-GNL3 Antibody (Center) (RB13797) in HL60 cell line lysates (35ug/lane). GNL3 (arrow) was detected using the purified Pab.

### Nucleostemin (GNL3) Antibody (Center) - Background

GNL3 may be required to maintain the proliferative capacity of stem cells.