

CSRP2 Antibody (Center)
Affinity Purified Rabbit Polyclonal Antibody (Pab)
Catalog # AP14068c

Specification

CSRP2 Antibody (Center) - Product Information

Application	IHC-P, WB,E
Primary Accession	Q16527
Other Accession	Q32LE9 , NP_001312.1
Reactivity	Human
Predicted	Bovine
Host	Rabbit
Clonality	Polyclonal
Isotype	Rabbit IgG
Calculated MW	20954
Antigen Region	68-96

CSRP2 Antibody (Center) - Additional Information

Gene ID 1466

Other Names

Cysteine and glycine-rich protein 2, Cysteine-rich protein 2, CRP2, LIM domain only protein 5, LMO-5, Smooth muscle cell LIM protein, SmLIM, CSRP2, LMO5, SMLIM

Target/Specificity

This CSRP2 antibody is generated from rabbits immunized with a KLH conjugated synthetic peptide between 68-96 amino acids from the Central region of human CSRP2.

Dilution

IHC-P~~1:10~50

WB~~1:1000

E~~Use at an assay dependent concentration.

Format

Purified polyclonal antibody supplied in PBS with 0.09% (W/V) sodium azide. This antibody is purified through a protein A column, followed by peptide affinity purification.

Storage

Maintain refrigerated at 2-8°C for up to 2 weeks. For long term storage store at -20°C in small aliquots to prevent freeze-thaw cycles.

Precautions

CSRP2 Antibody (Center) is for research use only and not for use in diagnostic or therapeutic procedures.

CSRP2 Antibody (Center) - Protein Information

Name CSRP2

Synonyms LMO5, SMLIM

Function Drastically down-regulated in response to PDGF-BB or cell injury, that promote smooth muscle cell proliferation and dedifferentiation. Seems to play a role in the development of the embryonic vascular system.

Cellular Location

Nucleus.

Tissue Location

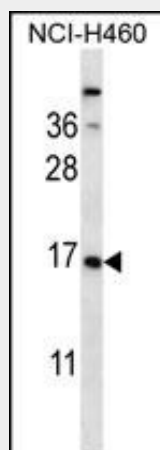
Highly expressed in the aorta, but not in heart and skeletal muscle

CSRP2 Antibody (Center) - Protocols

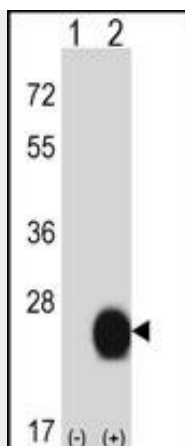
Provided below are standard protocols that you may find useful for product applications.

- [Western Blot](#)
- [Blocking Peptides](#)
- [Dot Blot](#)
- [Immunohistochemistry](#)
- [Immunofluorescence](#)
- [Immunoprecipitation](#)
- [Flow Cytometry](#)
- [Cell Culture](#)

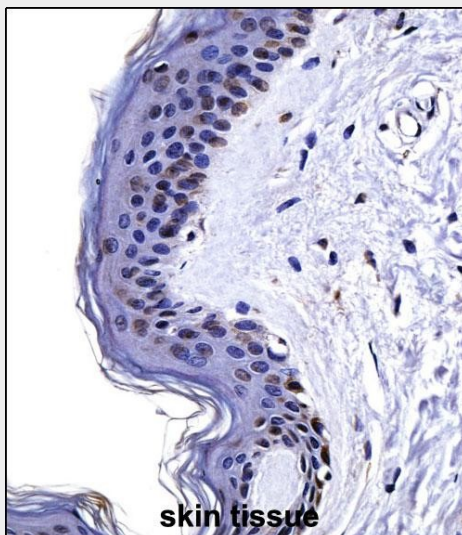
CSRP2 Antibody (Center) - Images



CSRP2 Antibody (Center) (Cat. #AP14068c) western blot analysis in NCI-H460 cell line lysates (35ug/lane). This demonstrates the CSRP2 antibody detected the CSRP2 protein (arrow).



Western blot analysis of CSRP2 (arrow) using rabbit polyclonal CSRP2 Antibody (Center) (Cat. #AP14068c). 293 cell lysates (2 ug/lane) either nontransfected (Lane 1) or transiently transfected (Lane 2) with the CSRP2 gene.



CSRP2 Antibody (Center) (AP14068c) immunohistochemistry analysis in formalin fixed and paraffin embedded human skin tissue followed by peroxidase conjugation of the secondary antibody and DAB staining. This data demonstrates the use of CSRP2 Antibody (Center) for immunohistochemistry. Clinical relevance has not been evaluated.

CSRP2 Antibody (Center) - Background

CSRP2 is a member of the CSRP family of genes, encoding a group of LIM domain proteins, which may be involved in regulatory processes important for development and cellular differentiation. CRP2 contains two copies of the cysteine-rich amino acid sequence motif (LIM) with putative zinc-binding activity, and may be involved in regulating ordered cell growth. Other genes in the family include CSRP1 and CSRP3.

CSRP2 Antibody (Center) - References

Stearns, M.E., et al. Mol. Cancer Res. 1(9):631-642(2003)
Wang, M., et al. Cancer Biol. Ther. 1(5):556-563(2002)
Weiskirchen, R., et al. Biochem. J. 359 (PT 3), 485-496 (2001) :
Weiskirchen, R., et al. Biochem. Biophys. Res. Commun. 274(3):655-663(2000)

Weiskirchen, R., et al. Genomics 44(1):83-93(1997)