

Mouse Mst4 Antibody (Center)
Affinity Purified Rabbit Polyclonal Antibody (Pab)
Catalog # AP14072c**Specification**

Mouse Mst4 Antibody (Center) - Product Information

Application	WB,E
Primary Accession	O99JT2
Other Accession	O9P289 , NP_598490.1
Reactivity	Human, Mouse
Host	Rabbit
Clonality	Polyclonal
Isotype	Rabbit IgG
Calculated MW	46614
Antigen Region	271-299

Mouse Mst4 Antibody (Center) - Additional Information**Gene ID** 70415**Other Names**

Serine/threonine-protein kinase 26, Stk26 {ECO:0000312|MGI:MGI:1917665}

Target/Specificity

This Mouse Mst4 antibody is generated from rabbits immunized with a KLH conjugated synthetic peptide between 271-299 amino acids from the Central region of mouse Mst4.

Dilution

WB~~1:1000

E~~Use at an assay dependent concentration.

Format

Purified polyclonal antibody supplied in PBS with 0.09% (W/V) sodium azide. This antibody is purified through a protein A column, followed by peptide affinity purification.

Storage

Maintain refrigerated at 2-8°C for up to 2 weeks. For long term storage store at -20°C in small aliquots to prevent freeze-thaw cycles.

Precautions

Mouse Mst4 Antibody (Center) is for research use only and not for use in diagnostic or therapeutic procedures.

Mouse Mst4 Antibody (Center) - Protein Information**Name** Stk26 {ECO:0000312|MGI:MGI:1917665}**Function** Serine/threonine-protein kinase that acts as a mediator of cell growth. Modulates

apoptosis. In association with STK24 negatively regulates Golgi reorientation in polarized cell migration upon RHO activation. Phosphorylates ATG4B at 'Ser-383', thereby increasing autophagic flux. Part of the striatin-interacting phosphatase and kinase (STRIPAK) complexes. STRIPAK complexes have critical roles in protein (de)phosphorylation and are regulators of multiple signaling pathways including Hippo, MAPK, nuclear receptor and cytoskeleton remodeling. Different types of STRIPAK complexes are involved in a variety of biological processes such as cell growth, differentiation, apoptosis, metabolism and immune regulation.

Cellular Location

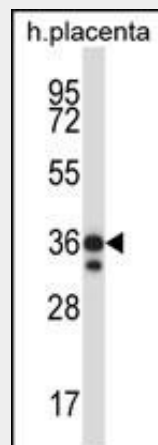
Cytoplasm {ECO:0000250|UniProtKB:Q9P289}. Golgi apparatus {ECO:0000250|UniProtKB:Q9P289}. Note=Colocalized with RIPOR1 in the Golgi of serum-starved cells and relocated to cytoplasmic punctae, probably vesicular compartments, along with RIPOR1 upon serum stimulation in a Rho- and PDCD10-dependent manner {ECO:0000250|UniProtKB:Q9P289}

Mouse Mst4 Antibody (Center) - Protocols

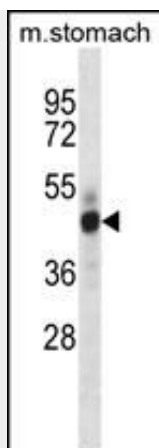
Provided below are standard protocols that you may find useful for product applications.

- [Western Blot](#)
- [Blocking Peptides](#)
- [Dot Blot](#)
- [Immunohistochemistry](#)
- [Immunofluorescence](#)
- [Immunoprecipitation](#)
- [Flow Cytometry](#)
- [Cell Culture](#)

Mouse Mst4 Antibody (Center) - Images



Mouse Mst4 Antibody (Center) (Cat. #AP14072c) western blot analysis in human placenta tissue lysates (35ug/lane). This demonstrates the Mst4 antibody detected the Mst4 protein (arrow).



Mouse Mst4 Antibody (Center) (Cat. #AP14072c) western blot analysis in mouse stomach tissue lysates (35ug/lane). This demonstrates the Mst4 antibody detected the Mst4 protein (arrow).

Mouse Mst4 Antibody (Center) - Background

Mediator of cell growth. Modulates apoptosis (By similarity).

Mouse Mst4 Antibody (Center) - References

Gerhard, D.S., et al. Genome Res. 14 (10B), 2121-2127 (2004) :