

Mouse Pkmyt1 Antibody (N-term)
Affinity Purified Rabbit Polyclonal Antibody (Pab)
Catalog # AP14078a

Specification

Mouse Pkmyt1 Antibody (N-term) - Product Information

Application	WB,E
Primary Accession	Q9ESG9
Reactivity	Human, Mouse
Host	Rabbit
Clonality	Polyclonal
Isotype	Rabbit IgG
Calculated MW	54053
Antigen Region	114-143

Mouse Pkmyt1 Antibody (N-term) - Additional Information

Gene ID 268930

Other Names

Membrane-associated tyrosine- and threonine-specific cdc2-inhibitory kinase, Myt1 kinase, Pkmyt1, Myt1

Target/Specificity

This Mouse Pkmyt1 antibody is generated from rabbits immunized with a KLH conjugated synthetic peptide between 114-143 amino acids from the N-terminal region of mouse Pkmyt1.

Dilution

WB~~1:1000

E~~Use at an assay dependent concentration.

Format

Purified polyclonal antibody supplied in PBS with 0.09% (W/V) sodium azide. This antibody is purified through a protein A column, followed by peptide affinity purification.

Storage

Maintain refrigerated at 2-8°C for up to 2 weeks. For long term storage store at -20°C in small aliquots to prevent freeze-thaw cycles.

Precautions

Mouse Pkmyt1 Antibody (N-term) is for research use only and not for use in diagnostic or therapeutic procedures.

Mouse Pkmyt1 Antibody (N-term) - Protein Information

Name Pkmyt1

Synonyms Myt1

Function Acts as a negative regulator of entry into mitosis (G2 to M transition) by phosphorylation of the CDK1 kinase specifically when CDK1 is complexed to cyclins. Mediates phosphorylation of CDK1 predominantly on 'Thr-14'. Also involved in Golgi fragmentation. May be involved in phosphorylation of CDK1 on 'Tyr-15' to a lesser degree, however tyrosine kinase activity is unclear and may be indirect.

Cellular Location

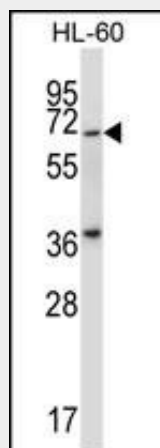
Endoplasmic reticulum membrane {ECO:0000250|UniProtKB:Q99640}; Peripheral membrane protein {ECO:0000250|UniProtKB:Q99640}. Golgi apparatus membrane {ECO:0000250|UniProtKB:Q99640}; Peripheral membrane protein {ECO:0000250|UniProtKB:Q99640}

Mouse Pkmyt1 Antibody (N-term) - Protocols

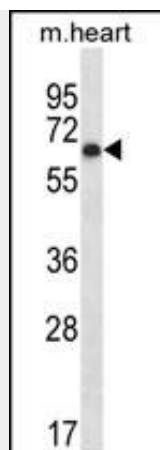
Provided below are standard protocols that you may find useful for product applications.

- [Western Blot](#)
- [Blocking Peptides](#)
- [Dot Blot](#)
- [Immunohistochemistry](#)
- [Immunofluorescence](#)
- [Immunoprecipitation](#)
- [Flow Cytometry](#)
- [Cell Culture](#)

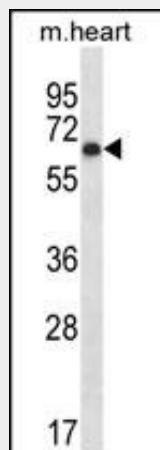
Mouse Pkmyt1 Antibody (N-term) - Images



Mouse Pkmyt1 Antibody (N-term) (Cat. #AP14078a) western blot analysis in HL-60 cell line lysates (35ug/lane). This demonstrates the Pkmyt1 antibody detected the Pkmyt1 protein (arrow).



Western blot analysis of Pkmyt1 (arrow) using rabbit polyclonal Mouse Pkmyt1 Antibody (N-term) (Cat. #AP14078a). 293 cell lysates (2 ug/lane) either nontransfected (Lane 1) or transiently transfected (Lane 2) with the Pkmyt1 gene.



Mouse Pkmyt1 Antibody (N-term) (Cat. #AP14078a) western blot analysis in mouse heart tissue lysates (35ug/lane). This demonstrates the Pkmyt1 antibody detected the Pkmyt1 protein (arrow).

Mouse Pkmyt1 Antibody (N-term) - Background

Pkmyt1 acts as a negative regulator of entry into mitosis (G2 to M transition) by phosphorylation of the CDK1 kinase specifically when CDK1 is complexed to cyclins. Mediates phosphorylation of CDK1 predominantly on 'Thr-14'. Also involved in Golgi fragmentation. May be involved in phosphorylation of CDK1 on 'Tyr-15' to a lesser degree, however tyrosine kinase activity is unclear and may be indirect. May be a downstream target of Notch signaling pathway during eye development (By similarity).