

**Mouse Prkx Antibody (N-term)**  
**Affinity Purified Rabbit Polyclonal Antibody (Pab)**  
**Catalog # AP14084a**

**Specification**

---

**Mouse Prkx Antibody (N-term) - Product Information**

Application	WB,E
Primary Accession	<a href="#">O922R0</a>
Other Accession	<a href="#">NP_058675.1</a>
Reactivity	Mouse
Host	Rabbit
Clonality	Polyclonal
Isotype	Rabbit IgG
Calculated MW	40467
Antigen Region	1-30

**Mouse Prkx Antibody (N-term) - Additional Information**

**Gene ID** 19108

**Other Names**

cAMP-dependent protein kinase catalytic subunit PRKX, PrKX, Protein kinase X, Protein kinase X-linked, Serine/threonine-protein kinase PRKX, PKA-related protein kinase, Prkx, Pkare

**Target/Specificity**

This Mouse Prkx antibody is generated from rabbits immunized with a KLH conjugated synthetic peptide between 1-30 amino acids from the N-terminal region of mouse Prkx.

**Dilution**

WB~~1:1000

E~~Use at an assay dependent concentration.

**Format**

Purified polyclonal antibody supplied in PBS with 0.09% (W/V) sodium azide. This antibody is purified through a protein A column, followed by peptide affinity purification.

**Storage**

Maintain refrigerated at 2-8°C for up to 2 weeks. For long term storage store at -20°C in small aliquots to prevent freeze-thaw cycles.

**Precautions**

Mouse Prkx Antibody (N-term) is for research use only and not for use in diagnostic or therapeutic procedures.

**Mouse Prkx Antibody (N-term) - Protein Information**

**Name** Prkx

### Synonyms Pkare

**Function** Serine/threonine protein kinase regulated by and mediating cAMP signaling in cells. Acts through phosphorylation of downstream targets that may include CREB, SMAD6 and PKD1 and has multiple functions in cellular differentiation and epithelial morphogenesis. Regulates myeloid cell differentiation through SMAD6 phosphorylation. Involved in nephrogenesis by stimulating renal epithelial cell migration and tubulogenesis. Also involved in angiogenesis through stimulation of endothelial cell proliferation, migration and vascular- like structure formation.

### Cellular Location

Cytoplasm. Nucleus. Note=cAMP induces nuclear translocation.

### Tissue Location

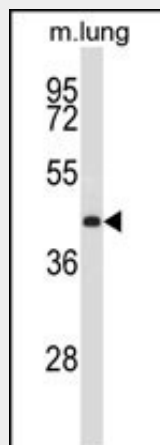
Widely expressed..

### Mouse Prkx Antibody (N-term) - Protocols

Provided below are standard protocols that you may find useful for product applications.

- [Western Blot](#)
- [Blocking Peptides](#)
- [Dot Blot](#)
- [Immunohistochemistry](#)
- [Immunofluorescence](#)
- [Immunoprecipitation](#)
- [Flow Cytometry](#)
- [Cell Culture](#)

### Mouse Prkx Antibody (N-term) - Images



Mouse Prkx Antibody (N-term) (Cat. #AP14084a) western blot analysis in mouse lung tissue lysates (35ug/lane). This demonstrates the Prkx antibody detected the Prkx protein (arrow).

### Mouse Prkx Antibody (N-term) - Background

Protein Kinase PKX1 belongs to the AGC Ser/Thr protein kinase family, cAMP subfamily. It contains one AGC-kinase C-terminal domain and one protein kinase domain. It is expressed at high levels in adult and fetal brain, kidney and lung and at low levels in adult placenta, heart, liver, skeletal muscle, pancreas and fetal liver.

**Mouse Prkx Antibody (N-term) - References**

Li, X., et al. Biochim. Biophys. Acta 1782(1):1-9(2008)  
Li, W., et al. J. Histochem. Cytochem. 53(8):1003-1009(2005)  
Blaschke, R.J., et al. Genomics 64(2):187-194(2000)  
Blaschke, R.J., et al. Genome Res. 7(12):1114-1117(1997)