

**EFCB7 Antibody (C-term)**  
**Affinity Purified Rabbit Polyclonal Antibody (Pab)**  
**Catalog # AP14097b****Specification**

---

**EFCB7 Antibody (C-term) - Product Information**

Application	WB, IHC-P, FC,E
Primary Accession	<a href="#">A8K855</a>
Other Accession	<a href="#">NP_115813.2</a>
Reactivity	Human, Mouse
Host	Rabbit
Clonality	Polyclonal
Isotype	Rabbit IgG
Calculated MW	71981
Antigen Region	434-462

**EFCB7 Antibody (C-term) - Additional Information****Gene ID** 84455**Other Names**

EF-hand calcium-binding domain-containing protein 7, EFCAB7, KIAA1799

**Target/Specificity**

This EFCB7 antibody is generated from rabbits immunized with a KLH conjugated synthetic peptide between 434-462 amino acids from the C-terminal region of human EFCB7.

**Dilution**

WB~~1:1000  
IHC-P~~1:10~50  
FC~~1:10~50

**Format**

Purified polyclonal antibody supplied in PBS with 0.09% (W/V) sodium azide. This antibody is purified through a protein A column, followed by peptide affinity purification.

**Storage**

Maintain refrigerated at 2-8°C for up to 2 weeks. For long term storage store at -20°C in small aliquots to prevent freeze-thaw cycles.

**Precautions**

EFCB7 Antibody (C-term) is for research use only and not for use in diagnostic or therapeutic procedures.

**EFCB7 Antibody (C-term) - Protein Information****Name** EFCAB7

**Synonyms** KIAA1799

**Function** Component of the EvC complex that positively regulates ciliary Hedgehog (Hh) signaling. Required for the localization of the EVC2:EVC subcomplex at the base of primary cilia.

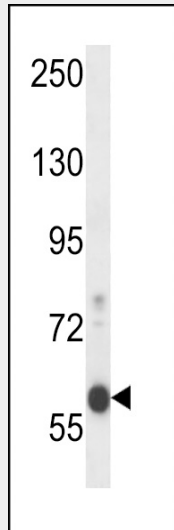
**Cellular Location**

Cell projection, cilium membrane {ECO:0000250|UniProtKB:Q8VDY4}; Peripheral membrane protein {ECO:0000250|UniProtKB:Q8VDY4}; Cytoplasmic side {ECO:0000250|UniProtKB:Q8VDY4}. Note=The EvC complex localizes at the base of cilia in the EvC zone of primary cilia in a EFCAB7-dependent manner. {ECO:0000250|UniProtKB:Q8VDY4}

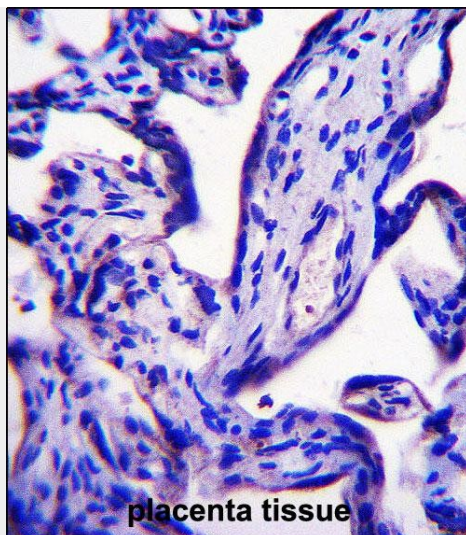
**EFCB7 Antibody (C-term) - Protocols**

Provided below are standard protocols that you may find useful for product applications.

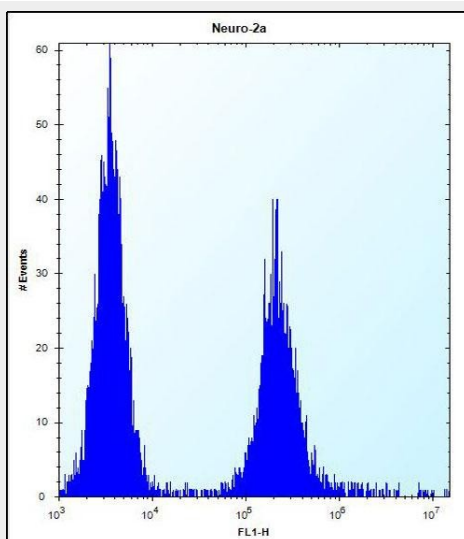
- [Western Blot](#)
- [Blocking Peptides](#)
- [Dot Blot](#)
- [Immunohistochemistry](#)
- [Immunofluorescence](#)
- [Immunoprecipitation](#)
- [Flow Cytometry](#)
- [Cell Culture](#)

**EFCB7 Antibody (C-term) - Images**

EFCB7 Antibody (C-term) (Cat. #AP14097b) western blot analysis in mouse Neuro-2a cell line lysates (35ug/lane). This demonstrates the EFCB7 antibody detected the EFCB7 protein (arrow).



EFCB7 Antibody (C-term) (Cat. #AP14097b) immunohistochemistry analysis in formalin fixed and paraffin embedded human placenta tissue followed by peroxidase conjugation of the secondary antibody and DAB staining. This data demonstrates the use of EFCB7 Antibody (C-term) for immunohistochemistry. Clinical relevance has not been evaluated.



EFCB7 Antibody (C-term) (Cat. #AP14097b) flow cytometric analysis of Neuro-2a cells (right histogram) compared to a negative control cell (left histogram). FITC-conjugated donkey-anti-rabbit secondary antibodies were used for the analysis.

#### **EFCB7 Antibody (C-term) - References**

Mehrle, A., et al. Nucleic Acids Res. 34 (DATABASE ISSUE), D415-D418 (2006) :  
Wiemann, S., et al. Genome Res. 14 (10B), 2136-2144 (2004) :