

IGF1 Antibody (C-term)
Affinity Purified Rabbit Polyclonal Antibody (Pab)
Catalog # AP14099b**Specification**

IGF1 Antibody (C-term) - Product Information

Application	WB, IHC-P, FC, IF, E
Primary Accession	P05019-2
Other Accession	P01343 , NP_000609.1
Reactivity	Human
Host	Rabbit
Clonality	Polyclonal
Isotype	Rabbit IgG
Antigen Region	115-144

IGF1 Antibody (C-term) - Additional Information**Other Names**

IGF1; IBP1; Insulin-like growth factor I; Mechano growth factor; Somatomedin-C

Target/Specificity

This IGF1 antibody is generated from rabbits immunized with a KLH conjugated synthetic peptide between 115-144 amino acids from the C-terminal region of human IGF1.

Dilution

WB~~1:1000
IHC-P~~1:10~50
FC~~1:10~50
IF~~1:10~50
E~~Use at an assay dependent concentration.

Format

Purified polyclonal antibody supplied in PBS with 0.09% (W/V) sodium azide. This antibody is purified through a protein A column, followed by peptide affinity purification.

Storage

Maintain refrigerated at 2-8°C for up to 2 weeks. For long term storage store at -20°C in small aliquots to prevent freeze-thaw cycles.

Precautions

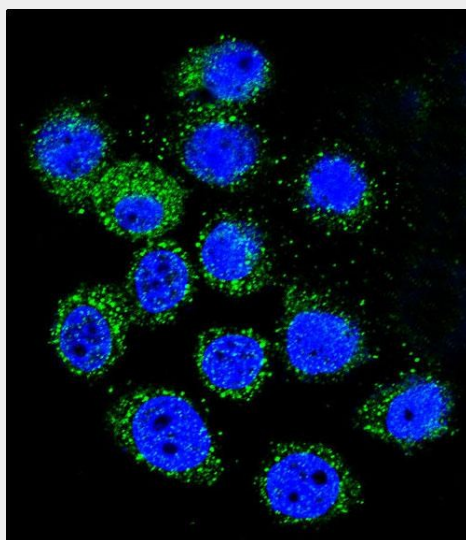
IGF1 Antibody (C-term) is for research use only and not for use in diagnostic or therapeutic procedures.

IGF1 Antibody (C-term) - Protein Information**IGF1 Antibody (C-term) - Protocols**

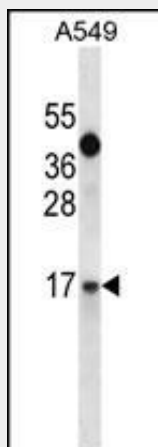
Provided below are standard protocols that you may find useful for product applications.

- [Western Blot](#)
- [Blocking Peptides](#)
- [Dot Blot](#)
- [Immunohistochemistry](#)
- [Immunofluorescence](#)
- [Immunoprecipitation](#)
- [Flow Cytometry](#)
- [Cell Culture](#)

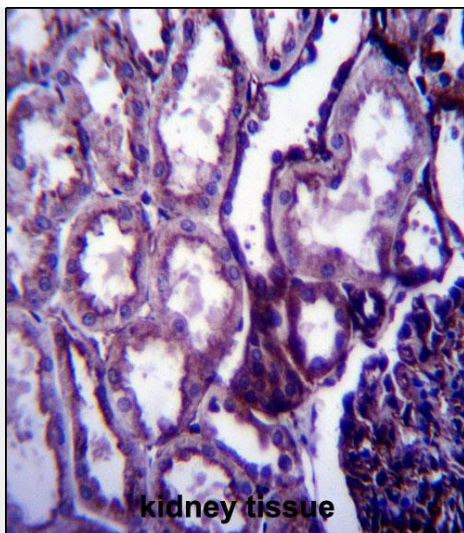
IGF1 Antibody (C-term) - Images



Confocal immunofluorescent analysis of IGF1 Antibody (C-term)(Cat#AP14099b) with A549 cell followed by Alexa Fluor 488-conjugated goat anti-rabbit IgG (green).DAPI was used to stain the cell nuclear (blue).

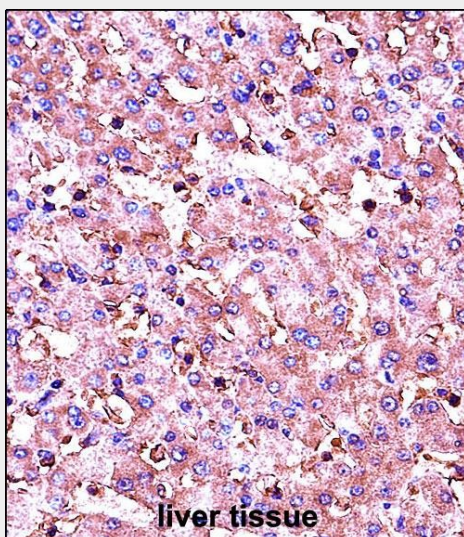


IGF1 Antibody (C-term) (Cat. #AP14099b) western blot analysis in A549 cell line lysates (35ug/lane).This demonstrates the IGF1 antibody detected the IGF1 protein (arrow).



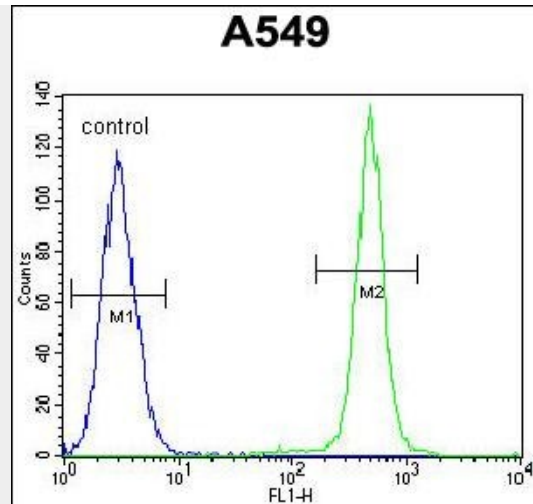
kidney tissue

IGF1 Antibody (C-term) (Cat. #AP14099b) immunohistochemistry analysis in formalin fixed and paraffin embedded human kidney tissue followed by peroxidase conjugation of the secondary antibody and DAB staining. This data demonstrates the use of IGF1 Antibody (C-term) for immunohistochemistry. Clinical relevance has not been evaluated.



liver tissue

IGF1 Antibody (C-term) (Cat. #AP14099b) immunohistochemistry analysis in formalin fixed and paraffin embedded human liver tissue followed by peroxidase conjugation of the secondary antibody and DAB staining. This data demonstrates the use of IGF1 Antibody (C-term) for immunohistochemistry. Clinical relevance has not been evaluated.



IGF1 Antibody (C-term) (Cat. #AP14099b) flow cytometric analysis of A549 cells (right histogram) compared to a negative control cell (left histogram). FITC-conjugated goat-anti-rabbit secondary antibodies were used for the analysis.

IGF1 Antibody (C-term) - Background

The protein encoded by this gene is similar to insulin in function and structure and is a member of a family of proteins involved in mediating growth and development. The encoded protein is processed from a precursor, bound by a specific receptor, and secreted. Defects in this gene are a cause of insulin-like growth factor I deficiency. Several transcript variants encoding different isoforms have been found for this gene.

IGF1 Antibody (C-term) - References

Li, M., et al. J. Biol. Chem. 285(40):30480-30488(2010)
Canzian, F., et al. Hum. Mol. Genet. 19(19):3873-3884(2010)
Romero, R., et al. Am. J. Obstet. Gynecol. 203 (4), 361 (2010) :
Bailey, S.D., et al. Diabetes Care 33(10):2250-2253(2010)
Szczesny, G., et al. Arch Orthop Trauma Surg (2010) In press :

IGF1 Antibody (C-term) - Citations

- [The Role of MiR-5094 as a Proliferation Suppressor during Cellular Radiation Response via Downregulating STAT5b](#)