

ERCC1 Antibody (C-term)
Affinity Purified Rabbit Polyclonal Antibody (Pab)
Catalog # AP14106b**Specification**

ERCC1 Antibody (C-term) - Product Information

Application	WB,E
Primary Accession	P07992
Other Accession	NP_001974.1
Reactivity	Human, Mouse
Host	Rabbit
Clonality	Polyclonal
Isotype	Rabbit IgG
Calculated MW	32562
Antigen Region	268-297

ERCC1 Antibody (C-term) - Additional Information**Gene ID** 2067**Other Names**

DNA excision repair protein ERCC-1, ERCC1

Target/Specificity

This ERCC1 antibody is generated from rabbits immunized with a KLH conjugated synthetic peptide between 268-297 amino acids from the C-terminal region of human ERCC1.

Dilution

WB~~1:1000

E~~Use at an assay dependent concentration.

Format

Purified polyclonal antibody supplied in PBS with 0.09% (W/V) sodium azide. This antibody is purified through a protein A column, followed by peptide affinity purification.

Storage

Maintain refrigerated at 2-8°C for up to 2 weeks. For long term storage store at -20°C in small aliquots to prevent freeze-thaw cycles.

Precautions

ERCC1 Antibody (C-term) is for research use only and not for use in diagnostic or therapeutic procedures.

ERCC1 Antibody (C-term) - Protein Information**Name** ERCC1**Function** [Isoform 1]: Non-catalytic component of a structure-specific DNA repair endonuclease

responsible for the 5'-incision during DNA repair. Responsible, in conjunction with SLX4, for the first step in the repair of interstrand cross-links (ICL). Participates in the processing of anaphase bridge-generating DNA structures, which consist in incompletely processed DNA lesions arising during S or G2 phase, and can result in cytokinesis failure. Also required for homology-directed repair (HDR) of DNA double-strand breaks, in conjunction with SLX4.

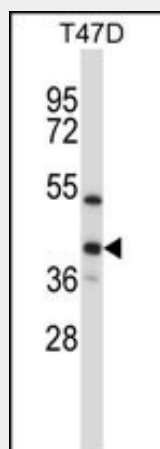
Cellular Location

[Isoform 1]: Nucleus [Isoform 3]: Nucleus

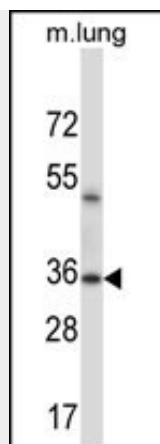
ERCC1 Antibody (C-term) - Protocols

Provided below are standard protocols that you may find useful for product applications.

- [Western Blot](#)
- [Blocking Peptides](#)
- [Dot Blot](#)
- [Immunohistochemistry](#)
- [Immunofluorescence](#)
- [Immunoprecipitation](#)
- [Flow Cytometry](#)
- [Cell Culture](#)

ERCC1 Antibody (C-term) - Images

ERCC1 Antibody (C-term) (Cat. #AP14106b) western blot analysis in T47D cell line lysates (35ug/lane). This demonstrates the ERCC1 antibody detected the ERCC1 protein (arrow).



ERCC1 Antibody (C-term) (Cat. #AP14106b) western blot analysis in mouse lung tissue lysates (35ug/lane). This demonstrates the ERCC1 antibody detected the ERCC1 protein (arrow).

ERCC1 Antibody (C-term) - Background

The product of this gene functions in the nucleotide excision repair pathway, and is required for the repair of DNA lesions such as those induced by UV light or formed by electrophilic compounds including cisplatin. The encoded protein forms a heterodimer with the XPF endonuclease (also known as ERCC4), and the heterodimeric endonuclease catalyzes the 5' incision in the process of excising the DNA lesion. The heterodimeric endonuclease is also involved in recombinational DNA repair and in the repair of inter-strand crosslinks. Mutations in this gene result in cerebrooculofacioskeletal syndrome, and polymorphisms that alter expression of this gene may play a role in carcinogenesis. Multiple transcript variants encoding different isoforms have been found for this gene. The last exon of this gene overlaps with the CD3e molecule, epsilon associated protein gene on the opposite strand.

ERCC1 Antibody (C-term) - References

- Palli, D., et al. *Mutagenesis* 25(6):569-575(2010)
- Scheil-Bertram, S., et al. *Gynecol. Oncol.* 119(2):325-331(2010)
- Wenchao, L., et al. *Diagn. Mol. Pathol.* 19(3):164-168(2010)
- Hoffmann, A.C., et al. *Neoplasia* 12(8):628-636(2010)
- van Duin, M., et al. *Mol. Cell. Biol.* 9(4):1794-1798(1989)