

CEBPE Antibody (C-term)
Affinity Purified Rabbit Polyclonal Antibody (Pab)
Catalog # AP14112b

Specification

CEBPE Antibody (C-term) - Product Information

Application	WB,E
Primary Accession	Q15744
Other Accession	NP_001796.2
Reactivity	Human, Mouse
Host	Rabbit
Clonality	Polyclonal
Isotype	Rabbit IgG
Antigen Region	203-232

CEBPE Antibody (C-term) - Additional Information

Gene ID 1053

Other Names

CCAAT/enhancer-binding protein epsilon, C/EBP epsilon, CEBPE

Target/Specificity

This CEBPE antibody is generated from rabbits immunized with a KLH conjugated synthetic peptide between 203-232 amino acids from the C-terminal region of human CEBPE.

Dilution

WB~~1:1000

E~~Use at an assay dependent concentration.

Format

Purified polyclonal antibody supplied in PBS with 0.09% (W/V) sodium azide. This antibody is purified through a protein A column, followed by peptide affinity purification.

Storage

Maintain refrigerated at 2-8°C for up to 2 weeks. For long term storage store at -20°C in small aliquots to prevent freeze-thaw cycles.

Precautions

CEBPE Antibody (C-term) is for research use only and not for use in diagnostic or therapeutic procedures.

CEBPE Antibody (C-term) - Protein Information

Name CEBPE

Function Transcriptional activator (PubMed:[26019275](#)). C/EBP are DNA- binding proteins that recognize two different motifs: the CCAAT homology common to many promoters and the

enhanced core homology common to many enhancers. Required for the promyelocyte-myelocyte transition in myeloid differentiation (PubMed:[10359588](#)).

Cellular Location

Nucleus

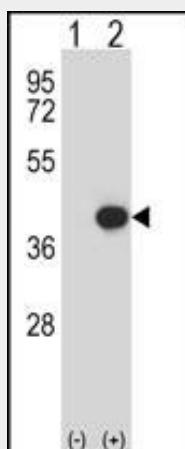
Tissue Location

Strongest expression occurs in promyelocyte and late-myeloblast-like cell lines.

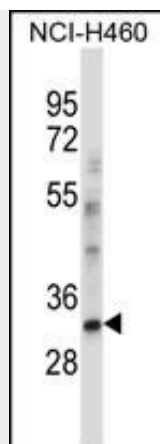
CEBPE Antibody (C-term) - Protocols

Provided below are standard protocols that you may find useful for product applications.

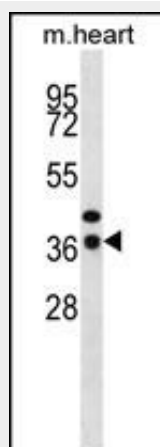
- [Western Blot](#)
- [Blocking Peptides](#)
- [Dot Blot](#)
- [Immunohistochemistry](#)
- [Immunofluorescence](#)
- [Immunoprecipitation](#)
- [Flow Cytometry](#)
- [Cell Culture](#)

CEBPE Antibody (C-term) - Images

Western blot analysis of CEBPE (arrow) using rabbit polyclonal CEBPE Antibody (C-term) (Cat. #AP14112b). 293 cell lysates (2 ug/lane) either nontransfected (Lane 1) or transiently transfected (Lane 2) with the CEBPE gene.



CEBPE Antibody (C-term) (Cat. #AP14112b) western blot analysis in NCI-H460 cell line lysates (35ug/lane). This demonstrates the CEBPE antibody detected the CEBPE protein (arrow).



CEBPE Antibody (C-term) (Cat. #AP14112b) western blot analysis in mouse heart tissue lysates (35ug/lane). This demonstrates the CEBPE antibody detected the CEBPE protein (arrow).

CEBPE Antibody (C-term) - Background

The protein encoded by this gene is a bZIP transcription factor which can bind as a homodimer to certain DNA regulatory regions. It can also form heterodimers with the related protein CEBP-delta. The encoded protein may be essential for terminal differentiation and functional maturation of committed granulocyte progenitor cells. Mutations in this gene have been associated with Specific Granule Deficiency, a rare congenital disorder. Multiple variants of this gene have been described, but the full-length nature of only one has been determined.

CEBPE Antibody (C-term) - References

Prasad, R.B., et al. Blood (2009) In press :
Papaemmanuil, E., et al. Nat. Genet. 41(9):1006-1010(2009)
Bedi, R., et al. Blood 113(2):317-327(2009)
Cloutier, A., et al. J. Immunol. 182(1):563-571(2009)
Matsushita, H., et al. Oncogene 27(53):6749-6760(2008)