

RBM39 Antibody (N-term)
Affinity Purified Rabbit Polyclonal Antibody (Pab)
Catalog # AP14119a**Specification**

RBM39 Antibody (N-term) - Product Information

Application	WB,E
Primary Accession	Q14498
Other Accession	Q8VH51 , NP_909122.1 , NP_004893.1
Reactivity	Human
Predicted	Mouse
Host	Rabbit
Clonality	Polyclonal
Isotype	Rabbit IgG
Calculated MW	59380
Antigen Region	114-143

RBM39 Antibody (N-term) - Additional Information**Gene ID** 9584**Other Names**

RNA-binding protein 39, CAPER alpha, Hepatocellular carcinoma protein 1, RNA-binding motif protein 39, RNA-binding region-containing protein 2, Splicing factor HCC1, RBM39, HCC1, RNPC2

Target/Specificity

This RBM39 antibody is generated from rabbits immunized with a KLH conjugated synthetic peptide between 114-143 amino acids from the N-terminal region of human RBM39.

Dilution

WB~~1:1000

E~~Use at an assay dependent concentration.

Format

Purified polyclonal antibody supplied in PBS with 0.09% (W/V) sodium azide. This antibody is purified through a protein A column, followed by peptide affinity purification.

Storage

Maintain refrigerated at 2-8°C for up to 2 weeks. For long term storage store at -20°C in small aliquots to prevent freeze-thaw cycles.

Precautions

RBM39 Antibody (N-term) is for research use only and not for use in diagnostic or therapeutic procedures.

RBM39 Antibody (N-term) - Protein Information**Name** RBM39 {ECO:0000303|PubMed:28302793, ECO:0000312|HGNC:HGNC:15923}

Function RNA-binding protein that acts as a pre-mRNA splicing factor (PubMed:[15694343](#), PubMed:[24795046](#), PubMed:[28302793](#), PubMed:[28437394](#), PubMed:[31271494](#)). Acts by promoting exon inclusion via regulation of exon cassette splicing (PubMed:[31271494](#)). Also acts as a transcriptional coactivator for steroid nuclear receptors ESR1/ER-alpha and ESR2/ER-beta, and JUN/AP-1, independently of the pre-mRNA splicing factor activity (By similarity).

Cellular Location

Nucleus speckle. Note=Concentrated in nuclear speckles (PubMed:8227358). Colocalizes with the core spliceosomal snRNP proteins (PubMed:8227358)

Tissue Location

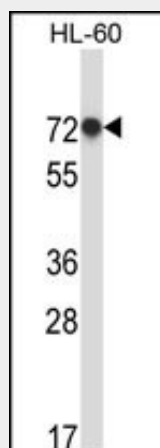
Widely expressed. Highly expressed in pancreas, skeletal muscle, lung and brain (PubMed:8227358). Expressed at intermediate level in kidney, liver and heart (PubMed:8227358)

RBM39 Antibody (N-term) - Protocols

Provided below are standard protocols that you may find useful for product applications.

- [Western Blot](#)
- [Blocking Peptides](#)
- [Dot Blot](#)
- [Immunohistochemistry](#)
- [Immunofluorescence](#)
- [Immunoprecipitation](#)
- [Flow Cytometry](#)
- [Cell Culture](#)

RBM39 Antibody (N-term) - Images



RBM39 Antibody (N-term) (Cat. #AP14119a) western blot analysis in HL-60 cell line lysates (35ug/lane). This demonstrates the RBM39 antibody detected the RBM39 protein (arrow).

RBM39 Antibody (N-term) - Background

The protein encoded by this gene is an RNA binding protein and possible splicing factor. The encoded protein is found in the nucleus, where it colocalizes with core spliceosomal proteins. Studies of a mouse protein with high sequence similarity to this protein suggest that this protein may act as a transcriptional coactivator for JUN/AP-1 and estrogen receptors. Multiple

transcript variants encoding different isoforms have been observed for this gene.

RBM39 Antibody (N-term) - References

Mercier, I., et al. Am. J. Pathol. 174(4):1172-1190(2009)
Dutta, J., et al. J. Virol. 82(21):10792-10802(2008)
Sugiyama, N., et al. Mol. Cell Proteomics 6(6):1103-1109(2007)
Olsen, J.V., et al. Cell 127(3):635-648(2006)
Olsen, J.V., et al. Cell 127(3):635-648(2006)