

CREG2 Antibody (C-term)
Affinity Purified Rabbit Polyclonal Antibody (Pab)
Catalog # AP14122B**Specification**

CREG2 Antibody (C-term) - Product Information

Application	WB, IHC-P,E
Primary Accession	Q8IUH2
Other Accession	NP_722578.1
Reactivity	Human
Host	Rabbit
Clonality	Polyclonal
Isotype	Rabbit IgG
Calculated MW	32109
Antigen Region	261-290

CREG2 Antibody (C-term) - Additional Information**Gene ID** 200407**Other Names**

Protein CREG2, CREG2

Target/Specificity

This CREG2 antibody is generated from rabbits immunized with a KLH conjugated synthetic peptide between 261-290 amino acids from the C-terminal region of human CREG2.

Dilution

WB~~1:1000

IHC-P~~1:10~50

E~~Use at an assay dependent concentration.

Format

Purified polyclonal antibody supplied in PBS with 0.09% (W/V) sodium azide. This antibody is purified through a protein A column, followed by peptide affinity purification.

Storage

Maintain refrigerated at 2-8°C for up to 2 weeks. For long term storage store at -20°C in small aliquots to prevent freeze-thaw cycles.

Precautions

CREG2 Antibody (C-term) is for research use only and not for use in diagnostic or therapeutic procedures.

CREG2 Antibody (C-term) - Protein Information**Name** CREG2

Cellular Location
Secreted.

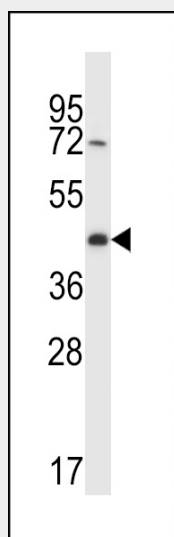
Tissue Location
Brain specific mainly in the limbic system and faintly in the spinal cord but not in cerebellum

CREG2 Antibody (C-term) - Protocols

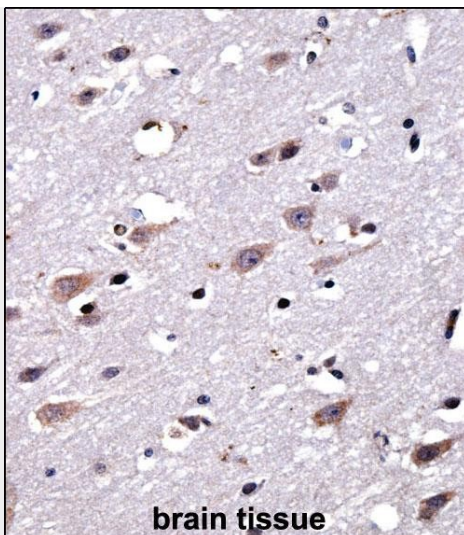
Provided below are standard protocols that you may find useful for product applications.

- [Western Blot](#)
- [Blocking Peptides](#)
- [Dot Blot](#)
- [Immunohistochemistry](#)
- [Immunofluorescence](#)
- [Immunoprecipitation](#)
- [Flow Cytometry](#)
- [Cell Culture](#)

CREG2 Antibody (C-term) - Images



CREG2 Antibody (C-term) (Cat. #AP14122b) western blot analysis in A2058 cell line lysates (35ug/lane). This demonstrates the CREG2 antibody detected the CREG2 protein (arrow).



CREG2 Antibody (C-term) (AP14122b) immunohistochemistry analysis in formalin fixed and paraffin embedded human brain tissue followed by peroxidase conjugation of the secondary antibody and DAB staining. This data demonstrates the use of CREG2 Antibody (C-term) for immunohistochemistry. Clinical relevance has not been evaluated.

CREG2 Antibody (C-term) - Background

The exact functions of CREG2 remain unknown.

CREG2 Antibody (C-term) - References

Kunita, R., et al. Genomics 80(5):456-460(2002)
Kunita, R., et al. Genomics 80(5):456-460(2002)