

Mouse Csnk1g1 Antibody (C-term)
Affinity Purified Rabbit Polyclonal Antibody (Pab)
Catalog # AP14134b**Specification**

Mouse Csnk1g1 Antibody (C-term) - Product Information

Application	WB, IHC-P,E
Primary Accession	Q8BTH8
Other Accession	A7E3X2 , NP_775277.2
Reactivity	Mouse
Predicted	Bovine
Host	Rabbit
Clonality	Polyclonal
Isotype	Rabbit IgG
Calculated MW	52744
Antigen Region	359-387

Mouse Csnk1g1 Antibody (C-term) - Additional Information**Gene ID** 214897**Other Names**

Casein kinase I isoform gamma-1, CKI-gamma 1, Csnk1g1

Target/Specificity

This Mouse Csnk1g1 antibody is generated from rabbits immunized with a KLH conjugated synthetic peptide between 359-387 amino acids from the C-terminal region of mouse Csnk1g1.

Dilution

WB~~1:1000

IHC-P~~1:10~50

Format

Purified polyclonal antibody supplied in PBS with 0.09% (W/V) sodium azide. This antibody is purified through a protein A column, followed by peptide affinity purification.

Storage

Maintain refrigerated at 2-8°C for up to 2 weeks. For long term storage store at -20°C in small aliquots to prevent freeze-thaw cycles.

Precautions

Mouse Csnk1g1 Antibody (C-term) is for research use only and not for use in diagnostic or therapeutic procedures.

Mouse Csnk1g1 Antibody (C-term) - Protein Information**Name** Csnk1g1

Function Serine/threonine-protein kinase. Casein kinases are operationally defined by their preferential utilization of acidic proteins such as caseins as substrates. It can phosphorylate a large number of proteins. Participates in Wnt signaling. Phosphorylates CLSPN (By similarity). Regulates fast synaptic transmission mediated by glutamate.

Cellular Location

Cytoplasm.

Tissue Location

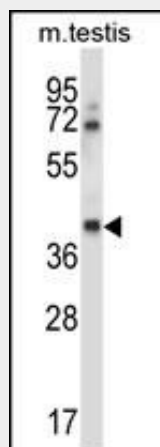
Expressed in both the striatum and the neocortex.

Mouse Csnk1g1 Antibody (C-term) - Protocols

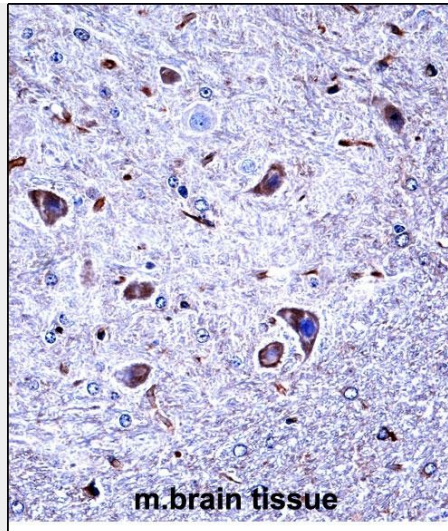
Provided below are standard protocols that you may find useful for product applications.

- [Western Blot](#)
- [Blocking Peptides](#)
- [Dot Blot](#)
- [Immunohistochemistry](#)
- [Immunofluorescence](#)
- [Immunoprecipitation](#)
- [Flow Cytometry](#)
- [Cell Culture](#)

Mouse Csnk1g1 Antibody (C-term) - Images



Mouse Csnk1g1 Antibody (C-term) (Cat. #AP14134b) western blot analysis in mouse testis tissue lysates (35ug/lane). This demonstrates the Csnk1g1 antibody detected the Csnk1g1 protein (arrow).



Mouse Csnk1g1 Antibody (C-term) (AP14134b) immunohistochemistry analysis in formalin fixed and paraffin embedded mouse brain tissue followed by peroxidase conjugation of the secondary antibody and DAB staining. This data demonstrates the use of Mouse Csnk1g1 Antibody (C-term) for immunohistochemistry. Clinical relevance has not been evaluated.

Mouse Csnk1g1 Antibody (C-term) - Background

Casein kinases are operationally defined by their preferential utilization of acidic proteins such as caseins as substrates. It can phosphorylate a large number of proteins. Participates in Wnt signaling (By similarity).

Mouse Csnk1g1 Antibody (C-term) - References

Chergui, K., et al. J. Neurosci. 25(28):6601-6609(2005)
Zambrowicz, B.P., et al. Proc. Natl. Acad. Sci. U.S.A. 100(24):14109-14114(2003)
Stryke, D., et al. Nucleic Acids Res. 31(1):278-281(2003)
Fujimoto, S., et al. Nucleic Acids Res. 21 (18), 4403 (1993) :

Mouse Csnk1g1 Antibody (C-term) - Citations

- [Jumonji Domain Containing 5 \(JMJD5\) Associates with Spindle Microtubules and Is Required for Proper Mitosis.](#)