

CD8A Antibody (N-term)
Affinity Purified Rabbit Polyclonal Antibody (Pab)
Catalog # AP1414a

Specification

CD8A Antibody (N-term) - Product Information

Application	IHC-P, WB,E
Primary Accession	P01732
Reactivity	Human
Host	Rabbit
Clonality	Polyclonal
Isotype	Rabbit IgG
Calculated MW	25729
Antigen Region	59-88

CD8A Antibody (N-term) - Additional Information

Gene ID 925

Other Names

T-cell surface glycoprotein CD8 alpha chain, T-lymphocyte differentiation antigen T8/Leu-2, CD8a, CD8A, MAL

Target/Specificity

This CD8A antibody is generated from rabbits immunized with a KLH conjugated synthetic peptide between 59-88 amino acids from the N-terminal region of human CD8A.

Dilution

IHC-P~~1:10~50

WB~~1:1000

E~~Use at an assay dependent concentration.

Format

Purified polyclonal antibody supplied in PBS with 0.09% (W/V) sodium azide. This antibody is purified through a protein A column, followed by peptide affinity purification.

Storage

Maintain refrigerated at 2-8°C for up to 2 weeks. For long term storage store at -20°C in small aliquots to prevent freeze-thaw cycles.

Precautions

CD8A Antibody (N-term) is for research use only and not for use in diagnostic or therapeutic procedures.

CD8A Antibody (N-term) - Protein Information

Name CD8A

Synonyms MAL

Function Integral membrane glycoprotein that plays an essential role in the immune response and serves multiple functions in responses against both external and internal offenses. In T-cells, functions primarily as a coreceptor for MHC class I molecule:peptide complex. The antigens presented by class I peptides are derived from cytosolic proteins while class II derived from extracellular proteins. Interacts simultaneously with the T-cell receptor (TCR) and the MHC class I proteins presented by antigen presenting cells (APCs). In turn, recruits the Src kinase LCK to the vicinity of the TCR-CD3 complex. LCK then initiates different intracellular signaling pathways by phosphorylating various substrates ultimately leading to lymphokine production, motility, adhesion and activation of cytotoxic T- lymphocytes (CTLs). This mechanism enables CTLs to recognize and eliminate infected cells and tumor cells. In NK-cells, the presence of CD8A homodimers at the cell surface provides a survival mechanism allowing conjugation and lysis of multiple target cells. CD8A homodimer molecules also promote the survival and differentiation of activated lymphocytes into memory CD8 T-cells.

Cellular Location

[Isoform 1]: Cell membrane; Single-pass type I membrane protein Note=CD8A localizes to lipid rafts only when associated with its partner CD8B.

Tissue Location

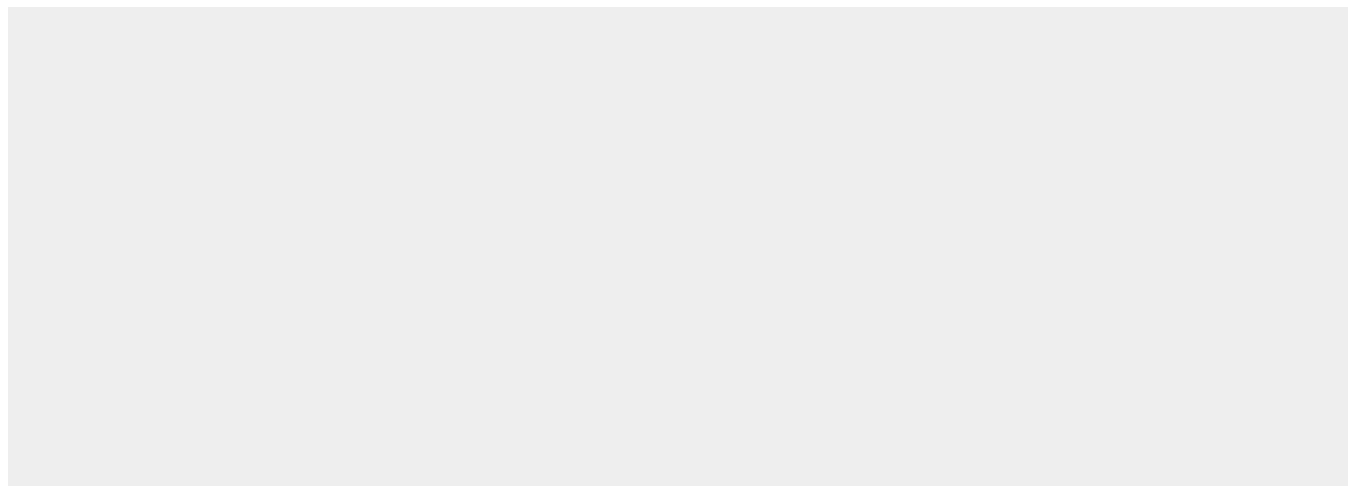
CD8 on thymus-derived T-cells usually consists of a disulfide-linked alpha/CD8A and a beta/CD8B chain. Less frequently, CD8 can be expressed as a CD8A homodimer. A subset of natural killer cells, memory T-cells, intraepithelial lymphocytes, monocytes and dendritic cells expresses CD8A homodimers. Expressed at the cell surface of plasmacytoid dendritic cells upon herpes simplex virus-1 stimulation

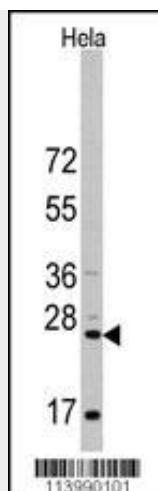
CD8A Antibody (N-term) - Protocols

Provided below are standard protocols that you may find useful for product applications.

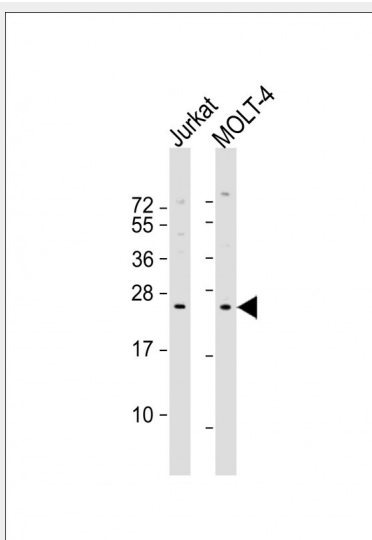
- [Western Blot](#)
- [Blocking Peptides](#)
- [Dot Blot](#)
- [Immunohistochemistry](#)
- [Immunofluorescence](#)
- [Immunoprecipitation](#)
- [Flow Cytometry](#)
- [Cell Culture](#)

CD8A Antibody (N-term) - Images

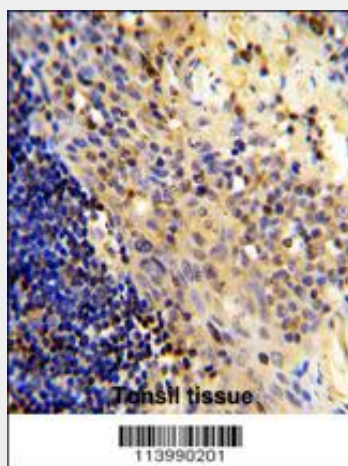




Western blot analysis of anti-CD8A Antibody (N-term) (Cat.#AP1414a) in HeLa cell line lysates (35ug/lane). CD8A (arrow) was detected using the purified Pab.



All lanes : Anti-CD8A Antibody (N-term) at 1:1000 dilution Lane 1: Jurkat whole cell lysate Lane 2: MOLT-4 whole cell lysate Lysates/proteins at 20 µg per lane. Secondary Goat Anti-Rabbit IgG, (H+L), Peroxidase conjugated at 1/10000 dilution. Predicted band size : 26 kDa Blocking/Dilution buffer: 5% NFDM/TBST.



Formalin-fixed and paraffin-embedded human tonsil tissue reacted with CD8A Antibody (N-term),

which was peroxidase-conjugated to the secondary antibody, followed by DAB staining. This data demonstrates the use of this antibody for immunohistochemistry; clinical relevance has not been evaluated.

CD8A Antibody (N-term) - Background

The CD8 antigen is a cell surface glycoprotein found on most cytotoxic T lymphocytes that mediates efficient cell-cell interactions within the immune system. The CD8 antigen, acting as a coreceptor, and the T-cell receptor on the T lymphocyte recognize antigen displayed by an antigen presenting cell (APC) in the context of class I MHC molecules. The functional coreceptor is either a homodimer composed of two alpha chains, or a heterodimer composed of one alpha and one beta chain. Both alpha and beta chains share significant homology to immunoglobulin variable light chains.

CD8A Antibody (N-term) - References

Mancebo,E., Mol. Immunol. 45 (2), 479-484 (2008)
Zhou,H., Transplant. Proc. 39 (10), 3065-3067 (2007)
Borchers,M.T., Exp. Mol. Pathol. 83 (3), 301-310 (2007)

CD8A Antibody (N-term) - Citations

- [Tumour and immune cell dynamics explain the PSA bounce after prostate cancer brachytherapy.](#)