

Mouse Lck Antibody (N-term)
Affinity Purified Rabbit Polyclonal Antibody (Pab)
Catalog # AP14151a**Specification**

Mouse Lck Antibody (N-term) - Product Information

Application	WB,E
Primary Accession	P06240
Other Accession	NP_034823.1 , NP_001155905.1
Reactivity	Mouse
Host	Rabbit
Clonality	Polyclonal
Isotype	Rabbit IgG
Calculated MW	57943
Antigen Region	20-47

Mouse Lck Antibody (N-term) - Additional Information**Gene ID** 16818**Other Names**

Proto-oncogene tyrosine-protein kinase LCK, Leukocyte C-terminal Src kinase, LSK, Lymphocyte cell-specific protein-tyrosine kinase, p56-LCK, Lck, Lsk-t

Target/Specificity

This Mouse Lck antibody is generated from rabbits immunized with a KLH conjugated synthetic peptide between 20-47 amino acids from the N-terminal region of mouse Lck.

Dilution

WB~~1:1000

E~~Use at an assay dependent concentration.

Format

Purified polyclonal antibody supplied in PBS with 0.09% (W/V) sodium azide. This antibody is purified through a protein A column, followed by peptide affinity purification.

Storage

Maintain refrigerated at 2-8°C for up to 2 weeks. For long term storage store at -20°C in small aliquots to prevent freeze-thaw cycles.

Precautions

Mouse Lck Antibody (N-term) is for research use only and not for use in diagnostic or therapeutic procedures.

Mouse Lck Antibody (N-term) - Protein Information**Name** Lck

Synonyms Lsk-t

Function Non-receptor tyrosine-protein kinase that plays an essential role in the selection and maturation of developing T-cells in the thymus and in the function of mature T-cells. Plays a key role in T- cell antigen receptor (TCR)-linked signal transduction pathways. Constitutively associated with the cytoplasmic portions of the CD4 and CD8 surface receptors. Association of the TCR with a peptide antigen- bound MHC complex facilitates the interaction of CD4 and CD8 with MHC class II and class I molecules, respectively, thereby recruiting the associated LCK protein to the vicinity of the TCR/CD3 complex. LCK then phosphorylates tyrosine residues within the immunoreceptor tyrosine- based activation motifs (ITAM) of the cytoplasmic tails of the TCR- gamma chains and CD3 subunits, initiating the TCR/CD3 signaling pathway. Once stimulated, the TCR recruits the tyrosine kinase ZAP70, that becomes phosphorylated and activated by LCK. Following this, a large number of signaling molecules are recruited, ultimately leading to lymphokine production. LCK also contributes to signaling by other receptor molecules. Associates directly with the cytoplasmic tail of CD2, which leads to hyperphosphorylation and activation of LCK. Also plays a role in the IL2 receptor-linked signaling pathway that controls the T-cell proliferative response. Binding of IL2 to its receptor results in increased activity of LCK. Is expressed at all stages of thymocyte development and is required for the regulation of maturation events that are governed by both pre-TCR and mature alpha beta TCR. Phosphorylates other substrates including RUNX3, PTK2B/PYK2, the microtubule-associated protein MAPT, RHOH or TYROBP (By similarity). Interacts with UNC119; this interaction plays a crucial role in activation of LCK (By similarity).

Cellular Location

Cell membrane; Lipid-anchor; Cytoplasmic side. Cytoplasm, cytosol. Note=Present in lipid rafts in an inactive form. {ECO:0000250|UniProtKB:P06239}

Tissue Location

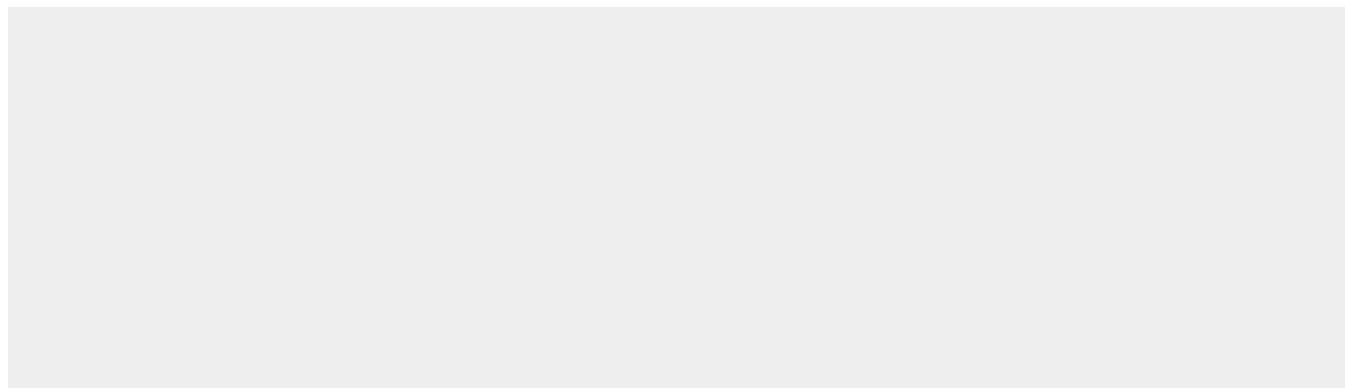
Present at a low level in most T-cells, and at an elevated level in LSTRA and Thy19 (T-cell lymphoma) cells

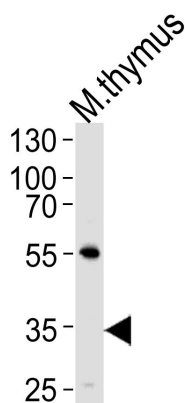
Mouse Lck Antibody (N-term) - Protocols

Provided below are standard protocols that you may find useful for product applications.

- [Western Blot](#)
- [Blocking Peptides](#)
- [Dot Blot](#)
- [Immunohistochemistry](#)
- [Immunofluorescence](#)
- [Immunoprecipitation](#)
- [Flow Cytometry](#)
- [Cell Culture](#)

Mouse Lck Antibody (N-term) - Images





Western blot analysis of lysate from mouse thymus tissue lysate, using Mouse Lck Antibody (N-term)(Cat. #AP14151a). AP14151a was diluted at 1:1000 at each lane. A goat anti-rabbit IgG H&L(HRP) at 1:5000 dilution was used as the secondary antibody. Lysate at 35ug per lane.

Mouse Lck Antibody (N-term) - Background

Tyrosine kinase that plays an essential role for the selection and maturation of developing T-cell in the thymus and in mature T-cell function. Is constitutively associated with the cytoplasmic portions of the CD4 and CD8 surface receptors and plays a key role in T-cell antigen receptor(TCR)-linked signal transduction pathways. Association of the TCR with a peptide antigen-bound MHC complex facilitates the interaction of CD4 and CD8 with MHC class II and class I molecules, respectively, and thereby recruits the associated LCK to the vicinity of the TCR/CD3 complex. LCK then phosphorylates tyrosines residues within the immunoreceptor tyrosines-based activation motifs (ITAMs) in the cytoplasmic tails of the TCRgamma chains and CD3 subunits, initiating the TCR/CD3 signaling pathway. In addition, contributes to signaling by other receptor molecules. Associates directly with the cytoplasmic tail of CD2, and upon engagement of the CD2 molecule, LCK undergoes hyperphosphorylation and activation. Also plays a role in the IL2 receptor-linked signaling pathway that controls T-cell proliferative response. Binding of IL2 to its receptor results in increased activity of LCK. Is expressed at all stages of thymocyte development and is required for the regulation of maturation events that are governed by both pre-TCR and mature alpha beta TCR (By similarity).

Mouse Lck Antibody (N-term) - References

- Visan, I., et al. J. Immunol. 185(8):4609-4617(2010)
- Chrobak, P., et al. J. Immunol. 185(7):3948-3959(2010)
- McCoy, M.E., et al. J. Immunol. 185(6):3285-3294(2010)
- Veillette, A., et al. J. Immunol. 185(5):2650-2657(2010)
- Hashimoto-Tane, A., et al. Mol. Cell. Biol. 30(14):3421-3429(2010)