

Mouse Map3k14 Antibody (C-term)
Affinity Purified Rabbit Polyclonal Antibody (Pab)
Catalog # AP14156b

Specification

Mouse Map3k14 Antibody (C-term) - Product Information

| | |
|-------------------|-----------------------------|
| Application | WB,E |
| Primary Accession | O9WUL6 |
| Other Accession | NP_058592.1 |
| Reactivity | Mouse |
| Host | Rabbit |
| Clonality | Polyclonal |
| Isotype | Rabbit IgG |
| Calculated MW | 103080 |
| Antigen Region | 652-680 |

Mouse Map3k14 Antibody (C-term) - Additional Information

Gene ID 53859

Other Names

Mitogen-activated protein kinase kinase kinase 14, NF-kappa-beta-inducing kinase, Serine/threonine-protein kinase NIK, Map3k14, Nik

Target/Specificity

This Mouse Map3k14 antibody is generated from rabbits immunized with a KLH conjugated synthetic peptide between 652-680 amino acids from the C-terminal region of mouse Map3k14.

Dilution

WB~~1:1000

Format

Purified polyclonal antibody supplied in PBS with 0.09% (W/V) sodium azide. This antibody is purified through a protein A column, followed by peptide affinity purification.

Storage

Maintain refrigerated at 2-8°C for up to 2 weeks. For long term storage store at -20°C in small aliquots to prevent freeze-thaw cycles.

Precautions

Mouse Map3k14 Antibody (C-term) is for research use only and not for use in diagnostic or therapeutic procedures.

Mouse Map3k14 Antibody (C-term) - Protein Information

Name Map3k14 {ECO:0000312|MGI:MGI:1858204}

Function Lymphotoxin beta-activated kinase which seems to be exclusively involved in the

activation of NF-kappa-B and its transcriptional activity. Phosphorylates CHUK/IKKA (By similarity). Promotes proteolytic processing of NFKB2/P100, which leads to activation of NF-kappa-B via the non-canonical pathway (PubMed:[11239468](#)). Has an essential role in the non-canonical NF-kappa-B signaling that regulates genes encoding molecules involved in B- cell survival, lymphoid organogenesis, and immune response (By similarity). Could act in a receptor-selective manner.

Cellular Location

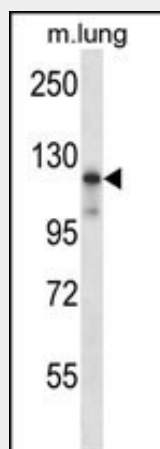
Cytoplasm.

Mouse Map3k14 Antibody (C-term) - Protocols

Provided below are standard protocols that you may find useful for product applications.

- [Western Blot](#)
- [Blocking Peptides](#)
- [Dot Blot](#)
- [Immunohistochemistry](#)
- [Immunofluorescence](#)
- [Immunoprecipitation](#)
- [Flow Cytometry](#)
- [Cell Culture](#)

Mouse Map3k14 Antibody (C-term) - Images



Mouse Map3k14 Antibody (C-term) (Cat. #AP14156b) western blot analysis in mouse lung tissue lysates (35ug/lane). This demonstrates the Map3k14 antibody detected the Map3k14 protein (arrow).

Mouse Map3k14 Antibody (C-term) - Background

Lymphotoxin beta-activated kinase which seems to be exclusively involved in the activation of NF-kappa-B and its transcriptional activity. Promotes proteolytic processing of NFKB2/P100, which leads to activation of NF-kappa-B via the non-canonical pathway. Could act in a receptor-selective manner.

Mouse Map3k14 Antibody (C-term) - References

Bhattacharyya, S., et al. Exp. Cell Res. 316(19):3317-3327(2010)
Maeda, Y., et al. Int. Immunol. 22(6):515-525(2010)
Sanjo, H., et al. J. Biol. Chem. 285(22):17148-17155(2010)

Takeshima, T., et al. Cancer Res. 70(7):2697-2706(2010)
Moro, K., et al. Nature 463(7280):540-544(2010)