

Mouse Mlk4 Antibody (Center)
Affinity Purified Rabbit Polyclonal Antibody (Pab)
Catalog # AP14157c**Specification**

Mouse Mlk4 Antibody (Center) - Product Information

Application	IHC-P, WB,E
Primary Accession	Q8VDG6
Other Accession	NP_663583.2
Reactivity	Mouse
Host	Rabbit
Clonality	Polyclonal
Isotype	Rabbit IgG
Calculated MW	110112
Antigen Region	566-593

Mouse Mlk4 Antibody (Center) - Additional Information**Gene ID** 234878**Other Names**

Mitogen-activated protein kinase kinase kinase MLK4, Mixed lineage kinase 4, Mlk4, Kiaa1804

Target/Specificity

This Mouse Mlk4 antibody is generated from rabbits immunized with a KLH conjugated synthetic peptide between 566-593 amino acids from the Central region of mouse Mlk4.

Dilution

IHC-P~~1:10~50

WB~~1:1000

E~~Use at an assay dependent concentration.

Format

Purified polyclonal antibody supplied in PBS with 0.09% (W/V) sodium azide. This antibody is purified through a protein A column, followed by peptide affinity purification.

Storage

Maintain refrigerated at 2-8°C for up to 2 weeks. For long term storage store at -20°C in small aliquots to prevent freeze-thaw cycles.

Precautions

Mouse Mlk4 Antibody (Center) is for research use only and not for use in diagnostic or therapeutic procedures.

Mouse Mlk4 Antibody (Center) - Protein Information**Name** Map3k21

Synonyms Kiaa1804, Mlk4

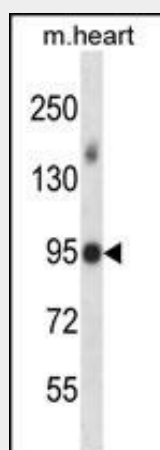
Function Negative regulator of TLR4 signaling. Does not activate JNK1/MAPK8 pathway, p38/MAPK14, nor ERK2/MAPK1 pathways (By similarity).

Mouse Mlk4 Antibody (Center) - Protocols

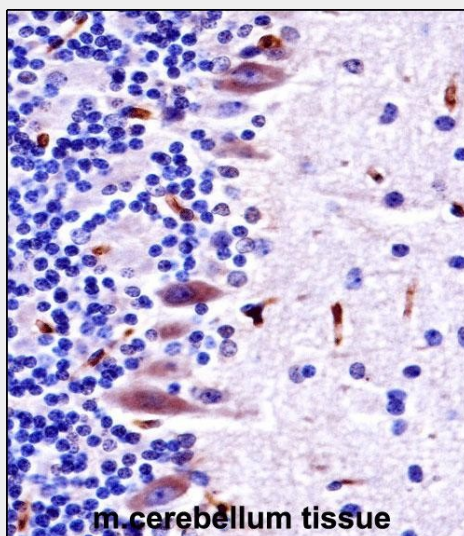
Provided below are standard protocols that you may find useful for product applications.

- [Western Blot](#)
- [Blocking Peptides](#)
- [Dot Blot](#)
- [Immunohistochemistry](#)
- [Immunofluorescence](#)
- [Immunoprecipitation](#)
- [Flow Cytometry](#)
- [Cell Culture](#)

Mouse Mlk4 Antibody (Center) - Images



Mouse Mlk4 Antibody (Center) (Cat. #AP14157c) western blot analysis in mouse heart tissue lysates (35ug/lane). This demonstrates the Mlk4 antibody detected the Mlk4 protein (arrow).



Mouse Mlk4 Antibody (Center) (AP14157c) immunohistochemistry analysis in formalin fixed and paraffin embedded mouse cerebellum tissue followed by peroxidase conjugation of the secondary antibody and DAB staining. This data demonstrates the use of Mouse Mlk4 Antibody (Center) for immunohistochemistry. Clinical relevance has not been evaluated.

Mouse Mlk4 Antibody (Center) - Background

Mlk4 activates the JUN N-terminal pathway (By similarity).

Mouse Mlk4 Antibody (Center) - References

Katayama, S., et al. Science 309(5740):1564-1566(2005)